

HUNTER INDUSTRY, COMMUNITY, SPORTS & ENTERTAINMENT

FREE

**@THE
COAL
FACE**

Vol 5 No 1: February 2020

Available online @ thecoalface.net.au



**CLEARING THE AIR ON
NUCLEAR
ENERGY**

PAGE 16-17

HON JOEL FITZGIBBON MP, FEDERAL MEMBER FOR HUNTER EXPLAINS HOW MODERN NUCLEAR POWER PLANTS COULD HELP TO PROVIDE THE FIRING POWER NEEDED TO ALLOW MORE RENEWABLE ENERGY INTO THE ELECTRICITY SYSTEM, WHILE ALSO KEEPING THE GRID STABLE AND ENERGY PRICES DOWN.

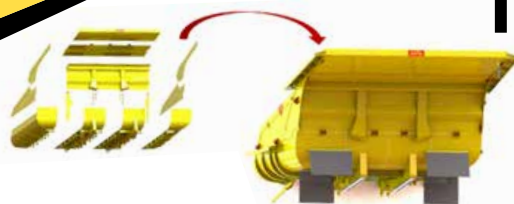


'IN OUR OWN WORDS'

THE 'IN OUR OWN WORDS' ABORIGINAL ORAL HISTORY PROJECT AT MUSWELLBROOK REGIONAL ART GALLERY WAS RECENTLY LAUNCHED THANKS TO SUPPORT FROM MACH ENERGY'S ABORIGINAL CULTURAL DEVELOPMENT FUND (ACDF).

PAGE 22

The **Future of Haul
Truck Trays** has
Arrived



MINETEC G4 EASY TRAY

Brauntell

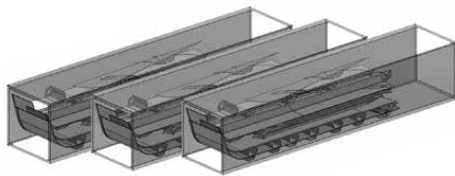
MINING PARTS

The Future of Haul Truck Trays has Arrived

MINETEC G4 EASY TRAY



- Makes transportation and assembly easy.
- Fastest delivery time from purchase to assembly.
- High productivity, lightweight and super strong dump trays.



Minetec Dump Tray can be shipped inside 3 High cube containers. Field mounting can be fast, secure and clean.

Contact Rick Adams to arrange your appointment today to see a Minetec Easy tray being assembled at Brauntell.

P 0455 552 200
M 0476 308 093
E rick@brauntell.com.au

www.brauntell.com.au



2021 HERE WE COME!

IT'S GREAT TO BE BACK FOR ANOTHER YEAR AND WE RECKON 2021 IS GOING TO BE THE BEST YEAR YET!



OPINION

HAPPY NEW YEAR

THANKS TO THE INCREDIBLE EFFORTS OF OUR LOCAL MINING WORKFORCE AND OUR MINING SUPPLIER BUSINESSES WE WERE ABLE TO KEEP OUR MINES RUNNING THROUGHOUT 2020 WHILE KEEPING OUR COMMUNITIES COVID-SAFE.

Now, we can look forward to the potential opportunities that 2021 has in store for our region.

Coal prices have recovered from last year's lows resulting from the global economic impact of COVID, and solid demand is expected to continue across export markets in the Asia-Pacific region during 2021.

The November 2020 NSW State Budget promised some real benefits for Hunter communities, with a further \$75 million from the Resources for Regions program for eligible mining-related local councils to potentially invest in projects to improve the community during 2021.

While there have been some mining jobs lost in the Hunter due to the pandemic, there was a very positive sign for jobs in the Hunter just before Christmas with approval given for the Maxwell underground mining project.

This project had strong community support as well as support from the Department of Planning. The Maxwell mine will create around

250 construction jobs and 350 ongoing jobs for the Hunter region worth \$55 million in annual wages once up and running.

THERE ARE MORE OPPORTUNITIES FOR JOBS AND INVESTMENT IN THE HUNTER'S MINING SECTOR IN 2021 WITH NINE LOCAL MINING PROJECTS IN THE PLANNING SYSTEM WITH THE POTENTIAL TO DELIVER AROUND 3,500 JOBS AND AROUND \$1.6 BILLION IN INVESTMENT FOR THE REGION.

2020 demonstrated once again that the Hunter mining sector is resilient and able to meet whatever challenges come our way, and there are positive signs that 2021 will be a better year.

Whatever 2021 might bring, the challenges we all faced last year have made us stronger together.

I wish all of our miners, their families, our suppliers and everyone living across the Hunter a safe, happy and prosperous 2021.

Stephen Galilee, CEO,
NSW Minerals Council

After a much-needed hiatus, the team at Coalface are back brimming with energy and ready to tackle whatever 2021 has in store. With 2020 a year where we faced everything from bushfires to droughts to a global pandemic, I'm pretty sure that there's nothing ahead in 2021 that we can't take on together.

There's plenty of good news to kickstart the year, from a surge in export coal prices in December, to lots of new projects in the pipeline, and we are very happy to see lots of important social and fundraising events are now back up and running. It's all promising to make for a fantastic year.

Things will look different as we come out the other side of the pandemic with many changes

Let's make sure the strong community spirit we saw strengthened throughout 2020 is one of those permanent changes.

Every year our industry strives to be better. From improving rehabilitation practices, to increasing diversity and gender equality, to implementing technologies and processes for efficiency and the reduction of emissions. And, above all, to ensuring a safe work environment where every single person goes home safely to their family. It's an industry we are so proud to be a part of.

We are excited to see what's ahead for 2021 and we can't wait to share it with you.

@THE COALFACE

Publisher

Shane Davey
shane@thecoalface.net.au
0408 759 088

Editor

Rebecca Connolly
rebecca@thecoalface.net.au
0408 769 699

Journalist

Ashley Grogan
ashley@thecoalface.net.au
0402 348 341

Design

CarrollMel Design

@ THE COALFACE
Shop 10, 157-159 John Street, Singleton NSW 2330
www.thecoalface.net.au

MORGAN ENGINEERING

EXPERIENCE - QUALITY - RELIABILITY

On-Site Mobile Line Boring & Field Services - Mobile Milling - Liquid Nitrogen Service & Supply
Weld Reclamation - CNC Machining - Medium Fabrication - Service Exchange Components

www.morganengineering.com.au P: +61 2 6572 2032 E: administration@morganengineering.com.au



OPINION

ELIMINATING THE SCOURGE



IT'S CLEAR FROM THE ALARMING FINDINGS OF RESEARCH INTO SEXUAL HARASSMENT IN THE AUSTRALIAN MINING SECTOR THAT WE NEED TO DO MORE AS AN INDUSTRY TO ELIMINATE THIS SCOURGE.

Working to eliminate workplace sexual harassment means applying the same vigilance, preventative approach and willingness to speak out as we would with any other workplace safety issue.

Our workers are our greatest asset and must be valued, respected and protected.

The Australian Human Rights Commission's Respect@Work: Sexual Harassment National Inquiry last year found that 40 per cent of the minerals industry workforce had experienced some form of sexual harassment in the past five years, with women more than twice as likely as men to be sexually harassed.

This is unacceptable, and illegal.

OUR INDUSTRY NEEDS TO LEAD A DECISIVE RESPONSE AND TAKE STRONGER ACTION FOR RESPECTFUL AND SAFE WORKPLACES.

The MCA supports the approach by Sex Discrimination Commissioner Kate Jenkins as outlined to the MCA Board last year that workplace sexual harassment is not inevitable or acceptable, and is preventable.

Recently the MCA announced that the scope of the minerals industry's safety and health policy would be expanded to cover safe, healthy and respectful workplaces.

We also released a strong and direct statement on the importance of eliminating sexual harassment in Australian mining workplaces.

Safety is the core value of the Australian minerals industry.

We showed what we can do to keep everyone safe during the COVID-19 pandemic.

It's now time to take stronger steps for a safe and fair workplace if we are to protect our great workforce – men and women – and change the culture of our industry to attract

a new group of younger entrants who want to know that they will be protected too.

The Safe, Healthy and Respectful Workplaces policy is focused on building and sustaining respectful workplaces, and combined with the industry's commitment to eliminating sexual harassment – endorsed by the MCA Board – will ensure Australian mining companies can work together to end unacceptable and illegal behaviour.

Such an approach builds on the minerals sector's strong and positive safety culture and systems to make changes focused on care for the whole person.

SENDING A CLEAR MESSAGE ACROSS THE INDUSTRY AND THE COMMUNITY THAT SEXUAL HARASSMENT IS UNACCEPTABLE AND WILL NOT BE TOLERATED WILL PUT THE SECTOR ON THE RIGHT PATH FOR CHANGE.

There will be more to come later this year, including an industry code and toolkit to provide guidance on how everyone in mine sites, head office and other parts of the industry can prevent and respond to sexual harassment in our workplaces.

This approach is important given that the risk of sexual harassment exists in our industry in urban and remote offices and workplaces, accommodation and travel, through social events and social media channels.

Our actions and leadership are about bringing renewed focus and leadership to create an industry culture that respects all people, eliminates sexual harassment, and stands up, supports and cares for all those affected by unacceptable behaviour.

Tania Constable
CEO, Minerals Council of Australia

TYRE + RIM REPAIR SOLUTIONS FOR MINING. WITH SHORT, RELIABLE TURNAROUND.



GATE-TO-GATE SERVICE

RIM TESTING + CERT.

RIM + WHEEL REPAIRS

SPECIALIST TYRE REPAIRS

REPAIR WORKSHOPS IN HUNTER VALLEY, BOWEN BASIN + WESTERN NSW.

TYRE DOCTOR
WE'RE OTR. WHERE EXPERIENCE COUNTS.

1800 897 336
www.tyredoctor.com.au
sales@tyredoctor.com.au

IN THE NEWS...

NEWS ANNOUNCER JESSICA ROUSE FROM RADIO HUNTER VALLEY HAS THE LATEST NEWS STORIES



AGL BATTERY CHARGING AHEAD

Energy giant AGL's battery project is another step closer.

AGL today announced that energy storage technology companies, Wärtsilä and Fluence have been secured under non-exclusive framework agreements to supply up to 1000MW of grid-scale battery storage.

AGL Chief Operating Officer, Markus Brokhof said the companies were chosen through a competitive tender process for their capability, experience and pricing as well as their alignment with AGL's values and strategic objectives.

Last year, AGL announced plans to build batteries at Loy Yang A power station in Victoria (200MW), Liddell power station (150MW) and Broken Hill (50MW) in NSW and Torrens Island (250 MW) in South Australia.

BYLONG MINE A TOTAL NO-GO

It's another blow for Korean energy giant KEPCO who have lost their appeal for a mine to be built in the Bylong Valley.

The NSW Land and Environment Court has upheld the decision made by the Independent Planning Commission (IPC) to reject the controversial coal mine planned for the pristine Bylong Valley. The IPC said the mine was rejected due to "long-lasting environmental, agricultural and heritage impacts".

KEPCO was seeking to have the decision overturned but it has been to no avail.

The IPC didn't stand in court, instead the Bylong Valley Protection Alliance did in its stead to defend the decision - the IPC declined to participate in the judicial review.

The mine if it went ahead would have been both an open and underground mine pulling 6.5 million tonnes of coal per year out of prime agricultural land. It's understood KEPCO had spent around \$700 million on the planning including buying land.

COAL EXPORTS ON THE RISE

Latest trade data confirm the resilience of Australia's resources sector with coal exports on the rise despite recent global challenges.

Minister for Resources, Water and Northern Australia Keith Pitt said the value of Australian coal exports in December increased by an impressive 26 per cent from November.

"Coal was worth \$3.7 billion to the Australian economy in December alone as exporters looked to fill gaps

in international markets and made the most of the increase in thermal coal prices," Minister Pitt said.

"This again reinforces the importance of coal as an Australian export commodity and that it will remain so for many more years to come."

"The trade data also confirms that despite the global challenges presented by the COVID-19 pandemic, Australian resources and energy exports were valued at a phenomenal \$272.5 billion in the 12 months to December," Minister Pitt said.

AGL FACES BIGGEST FINE THAT THE NSW EPA HAS EVER GIVEN TO AN ENERGY COMPANY

Energy giant AGL has been fined more than \$1 million by the NSW Environment Protection Authority after an incident at Bayswater Power Station.

In September 2019 on the Ravensworth ash line, the NSW EPA said that a hole formed in a fly ash transfer pipeline resulting in the release of fly ash slurry which flowed overland into the dry bed of Bayswater Creek, in breach of the Protection of the Environment Operations Act 1997.

The NSW EPA found that "despite AGL Macquarie taking immediate action to stop the pollution leaking from the damaged pipeline once it became aware of the incident, an estimated 1,440 cubic metres of fly ash was released".

"The undertaking, enforceable through the Land and Environment Court, will see AGL Macquarie spend up to \$600,000 on upgrades to the pipeline and contribute \$500,000 towards local environmental projects which are being determined."

MOMENTUM ON BYPASS

Momentum continues to build for the Singleton Bypass.

In a joint media release today the NSW and Australian Government say they are now seeking industry feedback on the best way to deliver the bypass so shovels can get in the ground and get construction happening as quickly as possible.

The Australian Government has committed \$560 million towards the bypass and the NSW Government \$140 million to get the project done.

Every local knows the bypass is desperately needed and will be a game changer for the area with around 26,000 vehicles, including more than 3,700 trucks, passing through Singleton every day.

MORE COAL FOR YANCOAL

Yancoal has flagged the possibility of an underground operation at Mount Thorley Warkworth with the company identifying a coal resource that could support an estimated annual production of around five million tonnes.

Yancoal is progressing its underground potential into a pre-feasibility study for submission to the board.

It is also considering increasing open-cut production at the Moolarben operation to 16 million tonnes a year. Should the expansion go ahead, Yancoal's annual run-of-mine (ROM) production at Moolarben would increase from 21 million tonnes to 24 million tonnes.

Yancoal stressed that this was dependent on its decision to increase its capacity at the coal handling and preparation plant.

DARTBROOK STILL NOT DONE

Australian Pacific Coal plans to appeal the Land and Environment Court's decision to join the Hunter Thoroughbred Breeders Association in opposing an extension of the Dartbrook coal mine. The company expects the appeal to be heard in the first half of 2021.

In line with this recent legal development, Australian Pacific Coal has commenced a strategic review of its assets, including the Dartbrook project, which is proposed to have its mine licence extended until 2027.

In the review, Australian Pacific Coal will evaluate the proposed coal mining operations at Dartbrook and its associated assets, including freehold land and water rights.

Australian Pacific Coal is considering all options for the mine, which has been mothballed for 14 years, including the divestment of non-core mining assets.

MAYFIELD GROUP

DOZERS, GRADERS, SCRAPERS, HAUL TRUCKS, WATER CARTS, LOADERS AND EXCAVATORS

Dry hire or have Mayfield do the job start to finish with industry leading equipment, operators and Open Cut Examiners ready to shape your project.



02 6571 1663

admin@mayfieldgroup.net

www.mayfieldgroup.net

MINING

CIVIL

NEW DEVELOPMENTS

PRIVATE INFRASTRUCTURE PROJECTS

MAXWELL UNDERGROUND PROJECT SITE AREA

MAXWELL PROJECT GETS THE GREEN LIGHT

UPPER HUNTER COMMUNITIES WILL REAP THE BENEFITS OF THE NSW INDEPENDENT PLANNING COMMISSION'S (IPC) DECISION TO APPROVE THE MAXWELL UNDERGROUND PROJECT ON DECEMBER 22, 2020.

Malabar Resources welcomed the decision by the IPC to approve the Maxwell Underground Project near Muswellbrook in the New South Wales Upper Hunter. The project will deliver about 250 construction jobs and 350 jobs during operation into the region and is set to generate \$55 million in annual wages once the project is up and running. Chairman Wayne Seabrook welcomed the announcement and said Malabar is eager to begin the necessary next steps to begin construction in 2021.

"THE NEWS IS JUST THE BEGINNING OF A MUCH LONGER JOURNEY WITH OUR NEIGHBOURS TO ENSURE THE PROJECT CONTINUES TO MEET THE EXPECTATIONS OF EVERYONE IN OUR COMMUNITY. MANY OF WHOM WE HAVE BEEN SPEAKING WITH OVER THE LAST EIGHT YEARS TO GET THIS PROJECT RIGHT."

"The Maxwell Underground Project represents immense potential for the communities of the Upper Hunter. The project will also support local businesses and suppliers over the next three decades, and provide a real boost to the local economy, particularly

during this challenging period." Maxwell Ventures (Management) Pty Ltd (the Applicant), a subsidiary of Malabar Coal Ltd, sought the planning approval to develop the new mine to produce approximately 148-million tonnes of Run of Mine coal over 26 years. The determination to give the development the green light follows the project's comprehensive and technical review by independent experts and rigorous assessment by the NSW Department of Planning, Industry and Environment (Department). The project also underwent significant community consultation and engagement, including through the public exhibition of the project's Environmental Impact Statement in September 2019 and a public hearing facilitated by the IPC in November 2020.

"The Commission finds that, on balance, and when weighed against the relevant climate change policy framework, objects of the [Environmental Planning & Assessment] Act, [Ecologically Sustainable Development] principles and socio-economic benefits, the potential impacts associated with the Project are manageable, and the risks of adverse impacts on the environment are low," its Statement of Reasons for Decision noted. The IPC concluded the potential impacts of a new underground coal mine in the NSW Hunter Valley can

'AVE A LAUGH WITH HUNTER VALLEY Hydraulic Hose and Fittings

BEST UNDER PRESSURE

A husband and wife were asleep at home at 3am when a loud knocking on their front door woke them up. The man opened the door and found a drunk standing in the pouring rain, asking for a push. The husband yelled at the drunk and shut the door, then went back to bed. "Who was it dear?" asked the wife. "Just some drunk guy asking for a push," he answers. "Did you help him?" she asks. "No, I did not it is pouring rain outside!" His wife sits up and frowns at him as she says, "Well, you have a short memory, can't you remember that time our car broke down, and those two guys helped us?" Ashamed the husband nods, then goes outside and steps out into the rain, then calls out into the dark, "Hello, I'm sorry. Did you still want a push?" "Yes please," comes the reply. The husband looks around then asks, "Where are you?" "Over here on the swing!"

02 6571 1625
hvhydrauliclink@bigpond.com
2 Mathy Ct, Singleton NSW 2330



P (02) 6574 6499
E hvsales@expressway.com.au
A 70 Mt Thorley Road, Mt Thorley NSW 2330
W www.expressway.com.au

Expressway Spares PTY. LTD.

PARTS AND EQUIPMENT SUITABLE FOR CATERPILLAR AND HITACHI

SUPPLIERS OF NEW, USED AND RECONDITIONED PARTS & COMPONENTS

We currently have over 300 experienced staff that are committed to keeping your machines working to minimise downtime with the supply of quality parts and service.

WAUCHOPE 02 6585 1000 | MACKAY 07 4955 0220 | PERTH 08 9477 1355 | GUNNEDAH 02 6741 4777



Fast Fills. No Spills.

Banlaw FillSafe™ Pressureless Fuel Tank Overfill Protection

Banlaw FillSafe™ helps avoid equipment damage and maintenance costs from inaccurate filling, whilst increasing fuelling efficiency and site safety.

Even at the highest refilling rates, FillSafe delivers consistently accurate filling of tanks and storages to your specified levels – no underfilling or overfilling.

Banlaw's tank overfill protection systems give you full confidence every time you refuel.

FillSafe Power

ELECTRONIC SOLUTION for maximised flow rates, all fluid types, fire-safe installation, and multiple pre-set fill levels.

FillSafe Zero

MECHANICAL SOLUTION for fast, accurate, pressureless filling of diesel tanks, on the widest range of machines.

Proudly Australian manufacturer exporting globally

Head Office | 19 Metro Court Gateshead NSW 2290
P +61 2 4922 6300 | E sales@banlaw.com | www.banlaw.com |



Manage, Mitigate and Eliminate Risk with Banlaw



WARWICK GLOSTER, BENGALLA MINING COMPANY MAINTENANCE MANAGER

THE MID-LIFE SHUTDOWN OF BENGALLA MINING COMPANY'S P6H 9020 DRAGLINE WAS EXECUTED SAFELY AND UNDER BUDGET.

The mid-life shutdown of Bengalla's dragline was completed late last year and is successfully back at work in the mine. While the shutdown was 18 days later than expected due to Covid-19 and heavy rains, it was successfully completed under budget, even more importantly, with zero injuries for the 132,014 personnel hours worked over the 89-day duration.

Warwick Gloster, Bengalla Mining Company Maintenance Manager, and his project management team over saw the P6H 9020 dragline mid-life shutdown and said seeing it successfully accomplished was a highlight for 2020.

"THIS 3-MONTH SHUTDOWN WAS ONE OF THE BIGGEST CHALLENGES IN 2020," SAID WARWICK. "WELL, ASIDE FROM COVID OF COURSE," HE ADDS.

"BUT IT WAS ALSO AN INSPIRATION. KNOWING I HAD THE TEAM TO NOT ONLY EXECUTE THE DRAGLINE SHUTDOWN SAFELY AND UNDER BUDGET, BUT ALSO TO CONTINUE TO DELIVER ON OUR SAFETY AND RELIABILITY OF THE OTHER 80 HME ASSETS WHILE COMPLETING THE LARGEST SHUTDOWN THIS MINE WILL SEE."

The usual lifecycle of a 9020 dragline is 300,000 hours with major shutdowns such as this occurring every 100,000 hours. Bengalla have been able to push this to more than 150,000 hours due mainly to the way the machine has been well looked after from an operating, maintenance and planning perspective.

The job involved a significant amount of mechanical, electrical and structural repairs and upgrades to the machine. The tub was returned with nil cracks remaining, the drag and hoist drums had major works completed, the A-frame deck lugs were upgraded, and the on-board camera system has been installed and commissioned. The boom was also lowered with all support ropes and

boom point sheaves replaced. Bengalla in conjunction with ABB Industrial Automation and Austindo Consulting Services also removed the redundant drive system and installed a new DC-EXX Digital Drive System for the dragline.

"THE SUCCESS OF THIS SHUTDOWN WOULD NOT HAVE BEEN POSSIBLE WITHOUT THE SUPPORT OF ALL PERSONNEL AT BENGALLA, ESPECIALLY THE SHUTDOWN MANAGEMENT TEAM AND BENGALLA SHUTDOWN EXECUTION TEAM, THE PRIMARY CONTRACTOR IN SYNC LIFT ENGINEERING (SLE) AND THE EXPERTISE THAT MANY OF THE VENDORS BROUGHT TO THE PROJECT," SAID WARWICK.



"The outstanding workmanship and professionalism of all involved helped to make the shutdown such a success. I am especially proud of my team and I am excited to see what my team will deliver in 2021 with the challenge of improving the reliability of our fleet to reduce our maintenance costs and continue to deliver at the bottom end of the cost curve while maintaining our excellent safety record."



BIG PLANS FOR 2021

THE UPPER HUNTER MINING DIALOGUE IS BACK IN ACTION FOR 2021 AND PLANNING A FULL SCHEDULE OF ACTIVITIES FOR THE YEAR AHEAD.

After 2020's disruptions, the Dialogue is keeping an eye on ongoing Covid-19 restrictions while planning a full agenda of community interactions, projects and other activities. The School Mine Tours Program is ready to roll again with the tour schedule allowing potentially more than 1000 Year 6 and Year 9 students from schools across the Upper Hunter to visit working mine sites. The School Mine Tours Program aims to teach students in giant outdoor classrooms about the benefits and

impacts from mining in the region. The Dialogue will also be out in force talking to community members at local shows and events including, at this stage, the Upper Hunter Show, Tocal Field Days, Broke Village Fair, Singleton Show and the Hunter Coal Festival. THE COMMUNITY ENGAGEMENT PROGRAM ALLOWS THE DIALOGUE TO MEET FACE TO FACE WITH COMMUNITY MEMBERS WHO MIGHT OTHERWISE NOT HAVE THE OPPORTUNITY TO INTERACT WITH THE DIALOGUE. THE INTERACTION

CARDS FOR KIDS

EVERY KID WILL LOVE THE ULTIMATE KIDS GIFT CARD. EVEN THE BIG ONES!

Want a great book to read? New headphones? Or perhaps a soccer ball to kick around? The options of what you can buy are endless with the Ultimate Kids Gift Card.

Limit of one entry per person. BY SUBMITTING AN ENTRY, YOU CONSENT TO THE USE OF YOUR CONTACT DETAILS FOR PROMOTIONAL AND MARKETING PURPOSES.

FOR YOUR CHANCE TO WIN A \$30 GIFT CARD, SIMPLY SMS: KIDS RULE, YOUR NAME, AND YOUR EMAIL ADDRESS TO 0438 474 290.

ULTIMATE

WORK TRUCKS & GLASS

MINE & EARTH MOVING SPECIFICATION GLASS

Ensure the safety of your operators with our Mine Specification Glass.

AUTOMOTIVE ACCESSORIES & LIGHT VEHICLE REPAIRS AND MAINTENANCE

Qualified light vehicle mechanic for your vehicle repairs and maintenance.
• Brakes • Engine • Fleet

WE SPECIALISE IN CUSTOM VEHICLE ACCESSORIES INCLUDING

• Ute trays • Suspension upgrades • Lighting and light bars

Lic. No. MVR/L57820

CONTACT US TODAY ON 0427 999 898

trucks@ultimateworktrucks.com.au | glass@ultimateworktrucks.com.au

CREIGHTONS FUNERAL SERVICE

Call the 24/7 Phone 1300 130 955

Peace of Mind with a Prepaid Funeral Plan

Creightons Funeral Service are 100% Australian owned and locally operated for over 170 years.

A Prepaid Funeral Plan:

- Locks the price in at today's rates
- Your wishes are respected
- Eases the emotional and financial burden on your loved ones

Our friendly team can meet you at one of our conveniently located **Hunter offices** or in the comfort of your home.

creightonsfuneralservice.com.au

DESIGN
ENGINEERING
FABRICATION
SITE INSTALLATIONS & PROJECT MANAGEMENT
MINING
RAIL
INFRASTRUCTURE & CONSTRUCTION

113 Mitchell Avenue, Kurri Kurri NSW 2327
02 4937 4570 | 02 4937 1777
e sales@solidengineering.com.au

www.solidengineering.com.au

ALSO ALLOWS THE DIALOGUE TO TRACK EMERGING ISSUES THROUGH DIRECT DISCUSSION AND SURVEYS CONDUCTED AT THE COMMUNITY EVENTS.

The development of new, relevant projects is very important to the Dialogue. Ideas for new projects are often generated through the Dialogue's community interactions – including at the Annual Forum.

In the absence of an Annual Forum last year which was postponed due to Covid-19 restrictions on gatherings, the Dialogue's Working Groups, including community members, are discussing and identifying potential new projects for 2021.

The Dialogue's yearly Water Accounting Framework project, which measures water use from the Hunter River, and the Rehabilitation

Principles and Commitments project's study of rehabilitation progress across industry partner mine sites are continuing regardless of Covid.

Despite the Covid disruption in 2020, the Dialogue finalised two major, long-term projects last year; a commissioned study of Hunter River quality and a report on air quality comparing trends in the Upper Hunter to other NSW regions.

Full details on those projects can be found on the Dialogue's newly refreshed website at miningdialogue.com.au

THE DIALOGUE IS VERY MUCH LOOKING FORWARD TO A FULL AND PRODUCTIVE YEAR OF ACTIVITY AND INTERACTION WITH THE UPPER HUNTER COMMUNITY IN 2021.

Looking for a Shed Builder who won't make life difficult?

'Dirt-To-Done' Design & Construct solutions

Challenge us with your project!

ASSET BUILDING SYSTEMS AUSTRALIA

1300 306 121

www.assetbuilding.com.au
sales@assetbuilding.com.au

OPINION

Casual Miners Thrown Under Government's Omnibus

CHANGING THE LAW TO PREVENT THE WIDESPREAD EXPLOITATION OF CASUALS IN THE COAL MINING INDUSTRY HAS BEEN A KEY FOCUS FOR OUR UNION IN RECENT YEARS.

But despite our success in the courts, the Morrison Government's 'IR Omnibus Bill' seeks to overturn our Federal Court wins and prevent exploited casual coal miners getting the justice they deserve. Over the past five to 10 years we have witnessed the widespread replacement of permanent direct hires with casual labour hire workers on 30-40% lower pay. It's a disgraceful practice driven by big mining companies, leaving loyal full-time workers with no job security or paid leave and without the pay, rights and conditions they deserve for a tough job. However, this deeply unfair practice has not been unlawful. While there is no provision for casual work under the Black Coal Mining Industry Award, the Fair Work Commission regularly approves Enterprise Agreements in the coal mining industry that allow for casual work. Despite Union arguments against casualisation, the FWC doesn't consider casual work to be a detriment to workers so long as they are considered 'better off overall' than the Award.

If workers vote up an agreement containing casualisation and it ticks the boxes, the FWC approves it and the agreement is lawful. **THAT'S WHY OUR UNION HAS SET OUT TO CHANGE THE LAW IN THIS AREA. WE HAVE HAD TWO MAJOR FEDERAL COURT WINS IN THE MATTERS OF WORKPAC V SKEANE AND WORK V ROSSATO.**

In both cases, the full bench of the Federal Court found that coal miners employed as casuals were not genuine casuals due to the regular, on-going nature of their work. The coal miners were therefore owed paid leave. These cases have provided the legal underpinning for casual coal miners to claim backpay for owed leave, including via the Union's own class action against WorkPac. The decisions effectively put an end to the casual labour hire business model in coal mining, which was our intention.

After the Rossato decision in May last year, employers unleashed an intense and disingenuous lobbying campaign calling on the Morrison Government to overturn the Federal Court decision through legislation. For obvious reasons, bosses don't want to compensate workers or stop exploiting casuals.

THROUGH OUR PROTECT CASUAL MINERS CAMPAIGN, THOUSANDS OF COAL MINERS AND THEIR FAMILIES EMAILED THEIR MPs CALLING ON THEM TO BACK THE FEDERAL COURT DECISIONS AND SUPPORT RIGHTS FOR CASUAL COAL MINERS.

Some Coalition MPs like Queensland Senator Matt Canavan and Mackay-based Dawson MP George Christensen even claimed they'd 'fixed' the issue - but then again there was a state election underway so they would say that.

It seems that the Morrison Government has 'fixed' the issue - but only for employers, not for coal miners.

In December, Attorney-General Christian Porter introduced the Fair Work Amendment (Supporting Australia's Economic Recovery) Bill 2020 (known



as the IR Omnibus Bill). The Bill proposes a definition of casual that goes against the WorkPac Federal Court judgments. The Government's proposed definition means that if you sign a contract saying you're a casual then you're a casual - regardless of whether your work hours and commitments end up being permanent and on-going in nature.

By making this definition retrospective, the Bill would prevent legal claims for backpaid compensation stemming from our court wins. The Bill says employers must offer permanent work after 12 months if there has been six months with a regular pattern - unless there are business grounds not to. With no provision for arbitration, that's just lip service.

The legislation is expected to come back before Federal Parliament in March. We will do everything we can to protect our Federal Court wins to stamp out the casual labour hire model and we'll fight to stop the IR Omnibus Bill passing Parliament in its current form.

Peter Jordan, CFMEU Northern Mining and NSW Energy District President

INSIDE THE NEW HUNTER VALLEY WORKSHOP

CRAM COMBINE HUNTER GREW

IN DECEMBER 2020, CRAM MERGED THEIR TOMAGO AND RUTHERFORD BRANCHES TO CREATE ONE TEAM THAT SERVES THE ENTIRE HUNTER REGION AND IT'S BEEN NOTHING BUT POSITIVE FOR THEIR TEAM, THEIR CUSTOMERS AND THE LOCAL COMMUNITY.



In just 2 months Cram have successfully combined 2 branches moving into a larger workshop, while still completing customer projects and providing uninterrupted service to sites.

It's no simple task up and moving two branches, two teams, to create one stronger and larger branch, yet Cram have made it look easy. If there's one thing that's clear, it's a testament to how well their team can communicate and work together when a job needs to be done.

Cram service, repair and supply equipment across a variety of industries including mining and manufacturing. They work across fluid power, site servicing, electro-hydraulic engineering, undercarriage and are a full

workshop service provider across NSW and QLD.

We sat down with Regional Manager for the Rutherford branch, Rob Skinner who gave us a bit more insight into the multi-faceted business. "Our team can provide ground up solutions for customers' needs such as new equipment, upgrades and total overhauls through our dealer partnerships or supplier agreements throughout a variety of industries."

"We now form part of Motion Asia Pacific's business portfolio which includes many other trusted and well know industrial brands like Hardy Spicer, CBC and Seal Innovations to name a couple."

"It essentially provides us with

a collective industry knowledge and expertise that spans over 180 branches, workshops, and service centres across Australia, New Zealand, and South-East Asia."

ROB HAS WORKED WITHIN THE MINING INDUSTRY SINCE 1996, WITH A WEALTH OF EXPERIENCE IN THE AREAS OF MACHINE MAINTENANCE, REPAIR, AND RELIABILITY, BUT COULDN'T HELP BRINGING EACH CONVERSATION BACK TO THE EFFORTS OF HIS ENTIRE TEAM. "THEY HAVE ALL BEEN INTEGRAL IN GROWING THE BRANCH, AND THEIR COMBINED SKILLS AND EXPERIENCES WILL ONLY CONTRIBUTE TO ITS CONTINUED GROWTH," SAID ROB.

Moving to the larger workshop has also enabled the merge of both teams

while also expanding. The team currently consists of 13 full time and 5 casual employees and with the expansion of their workshop service they are currently actively seeking one permanent position. "We hope to be able to provide the same opportunities to many other Hunter based workers in the near future," Rob said.

With the introduction of the first RTD32 drill rig into the Australian market on the way, their drive to continue to service and build their customer base in an ever-changing market, and the continued efforts to build on their surface and underground mining product ranges both for the surface and underground, we're sure to see the new branch continue to thrive.



A Drill Designed by Drillers for Drillers

RTDrill has unveiled its latest down-the-hole hammer drill rig, the RTD32, which is now available across Australia through CRAM.

RTD32 Specifications:

- Application: Down the hole
- Drill hole diameter: 105-203 mm (4-8 inch)
- Weight: 31,000 Kg (68,200 lbs)
- Power: 403 kW@1800-2100 rpm
- Air volume: 28 m³/min (989 CFM)
- Pressure: 28 bar (406 PSI)



To register your interest and learn more about the RTD32 Drill Rig.

cram.com.au



Hardy Spicer Newcastle SUPPORTING THE MINING INDUSTRY

For over 70 years, Hardy Spicer has built a reputation as a respected OEM & Aftermarket supplier of Driveshafts, Universal Joints, Hydraulic, and Industrial Hose and Fittings.

Our branch supports the Mining and Earthmoving industry with a fully equipped workshop and are Australia's Premier distributor of the Gates Connected range of integrated hydraulic hose and fittings products.

There's a new team in place with a wealth of knowledge. Branch Manager Julie-Anne is keen to work with you to service your requirements.

GIVE THE TEAM A CALL TODAY
02 4964 4955

hardyspicer.com.au



Rise UP

PCYC SINGLETON AND PCYC MUSWELLBROOK ARE GEARING UP FOR ANOTHER YEAR OF CHANGING THE LIVES OF AT-RISK YOUNG PEOPLE IN OUR COMMUNITY WITH THE CONTINUATION OF THE RISEUP PROGRAMS.

RISEUP is a strategy developed by the NSW Police Commissioner and incorporates a suite of programs which operate state-wide in partnership with PCYC NSW.

Targeted at youth aged between 15 and 18, the programs aim to build their engagement with education, employment opportunities and the community and encompass a range of strategies including early intervention, developmental crime prevention, positive relationships, support networking, functional numeracy, literacy, nutrition and behavioural workshops. They all include a job-ready component and link young people with employers.

Throughout the process youth are supported by police youth case managers, PCYC NSW youth workers and other specialist services to help them gain the skills required to land a job.

Term 4 in 2020 saw PCYC Singleton host the 'Fit To Learn' program. The ten week program is designed to re-engage disengaged youth



THE 'FIT TO LEARN' PROGRAM

into the education system, allowing them to further develop intellectual and social skills. The program encourages participants to explore their strengths in building respectful relationships within the school environment whilst also developing emotional intelligence skills preparing them for future employment. Kids are identified through the school system and they receive four qualifications on completion of the program: Certificate III Supply Chain Command, First Aid, White Card and Blue Card.

Senior Constable Scott O'Riley is a Youth Case Manager based at Singleton PCYC and remarked on the program's success.

"SOME KIDS FINISH THE PROGRAM, LEAVE SCHOOL AND SEEK EMPLOYMENT. OTHERS RE-ENGAGE WITH EDUCATION, GO BACK TO SCHOOL AND ONTO STUDY YEAR 11 AND 12. EITHER WAY, THEY ARE ARMED WITH QUALIFICATIONS TO ENTER THE WORKFORCE."

"We couldn't run these programs without the support of our local community, including organisations like Coal Services and Hunter Valley Mines Rescue, Workskil (Singleton), United Transport Solutions and Woolworths. We have a number of local providers working together to deliver the various elements of the program. We believe this makes a big difference to these kids, their families and ultimately the general community."

"The kids who finish the program will graduate and will be awarded their certificates in front of their families. It really is an achievement for them to celebrate."

The First Aid course was run by Doug Spencer, a Training Officer at Hunter Valley Mines Rescue who was pleased to be part of the program.

"I HAVE STRONG TIES TO THE PCYC AS A PREVIOUS MANAGER OF THE SINGLETON BRANCH AND



DOUG SPENCER AND SENIOR CONSTABLE SCOTT O'RILEY

2021 PROGRAM SCHEDULE

FITTOGETHER	TERM 1	(MUSWELLBROOK)
FITFORSERVICE	TERM 2	(SINGLETON)
FITFORCHANGE	TERM 3	(MUSWELLBROOK)
FITTOLEARN	TERM 4	(SINGLETON)
FITFORLIFE	TERMS 1, 2, 3, 4	(SINGLETON & MUSWELLBROOK)

THE BROADER COMMUNITY AND I HAVE SEEN FIRST-HAND THE DIFFERENCE THESE PROGRAMS CAN MAKE TO OUR YOUTH, THEIR DECISIONS, AND THE PATHS THEY TAKE," EXPLAINED DOUG.

"I am passionate about the importance of first aid training and the positive impact this has on our industry, communities and families. Being part of the program was a great opportunity for us to demonstrate our company values of we care, we work together,

and we make a difference, and hopefully impart some skills to this group of young men that might make a difference to them, their choices but also potentially the broader community."

In charge of the programs at PCYC Muswellbrook is Youth Case Manager Senior Constable Kelli Bastick, while Senior Constable Scott O'Riley is the Youth Case Manager based at PCYC Singleton. If you would like to know more about any of the programs you can contact the clubs directly or head to the PCYC website.



24/7 COVERAGE

We take pride in introducing 5 new apprentices for 2021

Here at DK Heavy Plant Services we thrive on helping lead the path for future generations, we are big on supporting our local community and helping people start their careers in this industry.

Apprenticeships is one of the best ways we can help young people start their careers and lead the path to their future goals.

ONE STOP SHOP

FOR ALL REPAIRS ON HEAVY EARTHMOVING MACHINERY



Anthony Van Vliet

APPRENTICE BOILERMAKER

"I've gained some great experience during my apprenticeship so far and am hoping to become a qualified Boilermaker"



Harry Schumaker

APPRENTICE BOILERMAKER

"The thing I'm looking forward to gaining most out of my apprenticeship is learning new skills and becoming a tradesman"



Jack Waters

APPRENTICE PLANT MECHANIC

"I'm very passionate about mechanics and can't wait to gain more experience and learn how to fix and change components"



Jarred Kermond

APPRENTICE FITTER MACHINIST

"I see the apprenticeship with DKHPS as a good opportunity to study what I want to do"



Douglas Stubbs

APPRENTICE BOILERMAKER

"I have been working with DKHPS for a few years and have now been given the opportunity to broaden my skill set by starting a Mature Age Boilermaker Apprenticeship"



Field Service • Line Boring • Mechanical • Sand blasting & painting • Fabrication

(02) 550 421 48 | admin@dkheavyplantservices.com | dkheavyplantservices.com

WWW.PCYCNWSW.ORG.AU/PROGRAMS/RISE-UP | PCYC SINGLETON - 02 6572 1653 | PCYC MUSWELLBROOK - 02 6541 1434

3M | **Speedglas™**
Welding Safety

Take Control

The 3M™ Speedglas™ G5-01 Heavy-Duty Welding Helmet with Adflo™ PAPP is available now!

ALLWELD
WELDING & ASBESTOS ABATEMENT

www.allweldservices.com.au
1300 663 888

BERESFIELD SALES
2/8 Yangan Drive
Beresfield NSW 2322

FLAME N ARC SERVICE & REPAIR
9/8 Young Street
East Maitland NSW 2323

MUSWELLBROOK SALES
7 Blakefield Road
Muswellbrook 2333



Maintenance of Competency training at Mines Rescue Pty Limited

Mines Rescue offers a range of courses to assist those holding practising certificates to maintain their competence to exercise a statutory function under the Work Health and Safety (Mines and Petroleum Sites) Regulation 2014.

Current and future courses will be designed to align with the NSW Resources Regulator's requirements.

Courses include:

- Legislation
- Learning from Disasters

Mines Rescue is approved by the NSW Resources Regulator to deliver the Learning from Disasters one-day program. Approved Training Provider number 0003650.

- Principal Mining Hazards and Controls
- Strata Management
- Emergency Management
- Strata
- Ventilation

Please visit our website for more information, including learning outcomes.



Contact Mines Rescue Pty Limited for details

Newcastle
T: 02 4922 4400
E: nmrs@rescue.coalservices.com.au

Hunter Valley
T: 02 6573 9000
E: hvms@rescue.coalservices.com.au

For full course overviews visit www.coalservices.com.au
Mines Rescue Pty Limited ABN 15 099 078 261 / RTO ID 90508



LEARN FROM THE LAWMAN

STUART BARNETT IS OUR MINING INDUSTRY'S LEADING PERSONAL INJURY LAWYER. THIS MONTH HE HAS SOME IMPORTANT ADVICE ABOUT DAMAGE TO YOUR PERSONAL PROPERTY IN A WORKPLACE ACCIDENT.

Most readers are aware that they have entitlements to compensation when they are injured at work. Workers are also entitled to claim compensation for damage to certain classes of personal property which are damaged as a result of a workplace accident. This applies whether or not the worker is injured. The requirement is that it is a workplace accident or to put it another way an accident arising out of or in the course of your employment. For Coal Miners that would include accidents on the way to and from work.

THE ENTITLEMENT TO CLAIM FOR PROPERTY DAMAGE, WHICH INCLUDES REPAIRS OR REPLACEMENT, FALLS INTO TWO MAIN CATEGORIES DESCRIBED AS ARTIFICIAL AIDS AND CLOTHING.

Artificial aids includes items such as artificial eyes, false teeth, crutches, artificial limbs or prothesis and spectacles. Clothing speaks for itself but would include the clothing you had on or with you at the time of the workplace accident.

In the event that the workplace accident occurred solely as a result of the serious and willful misconduct of the worker or if the artificial aids or clothing was intentionally damaged then no claim can be made.

THE LEGISLATION AND GUIDELINES SET OUT LIMITS TO THE AMOUNTS THAT CAN BE CLAIMED FOR DAMAGE

TO ARTIFICIAL AIDS AND CLOTHING. THERE IS HOWEVER PROVISION FOR AN APPLICATION TO BE MADE FOR ADDITIONAL AMOUNTS OVER AND ABOVE THE LIMITS WHEN ARE APPROPRIATE CIRCUMSTANCES.

In addition to the cost of the actual cost of repairs the service costs of professional or qualified persons is also payable, for example, the costs of consultations, appointments, service fees and the like. The workers' wages in attending on those consultations are also payable.



This is general advice and because your individual circumstances will vary, I recommend seeking out specific advice for your needs.

STUART BARNETT, SLATER & GORDON LAWYERS

'AVE A LAUGH WITH

My wife beamed at me with pride and said, "Wow! I never would have thought our

HUNTER VALLEY Hydraulink
Hose and Fittings

BEST UNDER PRESSURE

son would go that far!" I replied, "I know, this catapult is amazing! Go get our daughter."

02 6571 1625

hvhydraulink@bigpond.com | 2 Mathry Cl, Singleton NSW 2330



STUDENT NUMBERS SOAR

GLENCORE'S 2021 INTAKE FOR THE COAL SUMMER VACATION EMPLOYMENT PROGRAM IS THE LARGEST ON RECORD, WITH 101 STUDENTS FLOCKING TO SITES ACROSS NSW AND QUEENSLAND.

Glencore has welcomed its biggest ever student intake with 101 students set to gain on-the-job experience during the current university break. The program has seen 58 of those students placed at NSW operations and another 43 across Queensland sites.

Glencore's Human Resources Manager, Tracy Clements, said it was exciting to see such a diverse mix of disciplines and backgrounds entering the coal mining industry.

"THIS YEAR 23 OF THE 101 STUDENTS ARE MINING ENGINEERS, WHICH IS FANTASTIC GIVEN THE SHORTAGE IN THE INDUSTRY AND THE REQUIREMENT TO PROVIDE INDUSTRIAL EXPERIENCE TO QUALIFY FOR GRADUATION," SHE SAID.

"We also have students from disciplines including mechanical and electrical engineering, environmental science, finance and accounting, geology, human resources, and information technology."

Shirlee Duke, a Chemical Engineering and Business Management student at University of Queensland, is one of the many undertaking vacation work at Glencore.

She will spend 12 weeks working as a process engineering student at Ravensworth Coal Handling & Preparation Plant here in the Hunter.

"My passion for the resources and products that form the building blocks of today's society made me want to pursue a career as a process

engineer," she said. "Not all of the skills taught in the classroom at university prepare you for the job, and so I wanted to gain experience in understanding how one of the largest mining companies in the world operates and what makes it successful."

From assisting with daily stockpile drives to stocks reconciliation, Shirlee said no two days at site are the same.

"IF YOU'RE CONSIDERING APPLYING FOR A VACATION PROGRAM, DO IT," SHE SAID. "You will complete the program having learned so much technically, as well as about how a mine operates, how teams interact, and the importance of implementing safety protocols."

WIN!

FUEL UP!

BANLAW KNOW HOW TO KEEP MINES MOVING. JUST FOR YOU

They are the experts in fuel management for mines and now they're helping you manage your fuel with a \$50 Coles Express Giftcard up for grabs for one lucky reader.

FOR YOUR CHANCE TO WIN, SIMPLY SMS: FUEL UP WITH BANLAW, YOUR NAME, AND YOUR EMAIL ADDRESS TO 0438 474 290.
Limit of one entry per person.

BANLAW
02 4922 6300
SALES@BANLAW.COM | WWW.BANLAW.COM

BY SUBMITTING AN ENTRY, YOU CONSENT TO THE USE OF YOUR CONTACT DETAILS FOR PROMOTIONAL AND MARKETING PURPOSES.

Full pattern Autonomous Through-seam drilling

United. Inspired.

Multiple rigs working autonomously on multipatterns is now a reality in Australian coal.

Find out more. Freecall: 1300 366 880

epiroc.com

OPINION 'OUR OWN NUCLEAR DISASTER'

TWENTY-TWO YEARS AGO IN DECEMBER 2020, SOMETHING VERY STRANGE HAPPENED IN THE AUSTRALIAN SENATE. POLITICAL OPPORTUNISM AND PRAGMATISM COMBINED TO PLACE A PERMANENT PROHIBITION ON NUCLEAR POWER GENERATION IN AUSTRALIA. IT IS TIME TO CORRECT THAT MISTAKE AND THE CONSTRAINTS IT NOW PLACES ON OUR CAPACITY TO DELIVER RELIABLE AND AFFORDABLE ENERGY TO HOUSEHOLDS AND INDUSTRY ALIKE.

In the late 1990s, nuclear generation could not have hoped to compete with cheap, base-load coal generation and there was little appetite for it in the investment community. But as our coal generators age and approach the end of their economic lives, more questions are emerging about whether, like gas generators, modern nuclear plants could help to provide the firming power needed to allow more renewable energy into the electricity system, while also keeping the grid stable and energy prices down.

So, while the deals John Howard did with Greens and Democrats more than two decades ago must have seemed benign at the time, they are anything but now.

Australians may never develop a greater appetite for nuclear generation. But beyond unreliable opinion polls and politically motivated protests, it's hard to accurately measure levels of community support. That's because the nuclear prohibition prevents us from testing it. It prevents investment proposals and therefore, community and regulatory consideration of any such proposal. We can currently debate a principle, but not the merits of a particular project.

Parliamentary bookshelves around the country

are full of committee, Royal Commission, and other expert reports which recommended the embrace of nuclear generation in Australia. Notwithstanding, you can imagine the political opportunism which would dominate parliamentary debate if a government sought to repeal the two 1990s legislative prohibitions. In the national interest, those games and attitudes have to change.

NUCLEAR POWER STATIONS PROVIDE AROUND 10 PERCENT OF THE WORLD'S ELECTRICITY SUPPLY. THERE ARE 450 NUCLEAR GENERATORS IN 31 COUNTRIES INCLUDING THE UNITED STATES (95), THE UNITED KINGDOM (15), RUSSIA (38), CHINA (49), CANADA (19), INDIA (22), SWEDEN (7), AND FRANCE (56), WHERE 70 PERCENT OF THE ELECTRICITY SUPPLY COMES FROM NUCLEAR GENERATORS. HUNDREDS MORE ARE BEING PLANNED OR CONSTRUCTED.

The 1990s prohibition wasn't about keeping us safe. Rather, it was about politics. At the time anti-nuclear sentiment in Australia was high. Activists were mischievously conflated nuclear weaponry with civil nuclear uses and waste disposal. Throughout the preceding decade the flames of protest had been fanned by French nuclear weapons testing in the Pacific and the



subsequent bombing of Greenpeace's flagship the Rainbow Warrior. The search for a safe and permanent home for waste from Lucas Heights provided the activists with further propaganda material. Desperate for Senate support for his GST, John Howard was in an accommodating mood and the political deals with the Greens and Democrats were done dirt heap.

Australia is endowed with one third of the world's uranium reserves, more than any other country. We export our product to the Americas, Europe, Asia and the Middle East. We do so absolutely confident it won't make its way to weaponry or to terrorists, and will provide safe, reliable and affordable electricity for the householders and manufacturers of those regions.



THE INTERNATIONAL ENERGY AGENCY HAS IDENTIFIED THE IMPORTANT ROLE NUCLEAR GENERATION WILL PLAY IN REDUCING GLOBAL GREENHOUSE GAS EMISSIONS. IN AUSTRALIA, IT COULD ALSO CREATE HUNDREDS OF THOUSANDS OF JOBS ALONG THE NUCLEAR FUEL CYCLE. FURTHER, BUILDING A NUCLEAR ENERGY INDUSTRY AND ITS ASSOCIATED WORKFORCE WOULD ALSO OPEN EMPLOYMENT OPPORTUNITIES IN OTHER SECTORS.

Every year Australian industries with relatively high risk-profiles successfully and unsuccessfully negotiate scientific studies and significant government regulatory and approvals processes.

Anyone proposing a nuclear generator should face the same processes and the same processes only. The prohibition on a particular technology makes no sense.

In many countries where nuclear generation has existed for a long time, sophisticated new models and processes have been developed to enhance community participation in the consultation

and consent processes. Indeed, in some countries community investment partnerships have been formed. We could do those things here too.

The latest generation of nuclear plants are smaller, enabling faster, safer, less expensive, and more standardised construction. No longer dependent on large amounts of water for cooling purposes, they can be built in remote locations, well away from our predominantly coastal communities. Indeed, they can be built underground. These new technologies have the potential to overcome what may be the greatest barrier to local nuclear generation in Australia, the "not in my backyard" syndrome.

Not content with scare campaigns over safety, investors who profit from the subsidised renewables sector argue nuclear generation is too expensive. Plenty of parliamentary inquiries, Royal Commissions and think tanks have said otherwise. But in any case, it's not for governments or regulators to make these judgements. That's a matter for those prepared

THE MEGA MONTHLY MEAT RAFFLE



WORTH \$150 COMPLIMENTS OF ROBERT'S MEATS

The Hunters best butcher of hand-picked meaty goodness!

FOR YOUR CHANCE TO WIN, SIMPLY SMS: ROBERT'S MEATS, YOUR NAME AND YOUR EMAIL ADDRESS TO 0438 474 290.

Limit of one entry per person.

BY SUBMITTING AN ENTRY, YOU CONSENT TO THE USE OF YOUR CONTACT DETAILS FOR PROMOTIONAL AND MARKETING PURPOSES.

to put their money where their mouth is. Thankfully, we don't let politicians or public servants decide what offers a reasonable return on investment and what does not.

Earlier last month, the Energy Security Board warned of trouble ahead on the electricity reliability front. It's time to ditch the political opportunism and scare campaigns. It's time to remove the legislative prohibitions on nuclear generation to give investors the opportunity to test community support for the latest and best technology through world's-best consultation and science-based approvals processes.

Hon Joel Fitzgibbon MP
Federal Member for Hunter



Aboriginal Community Development Fund

MACHenergy Mount Pleasant Operation

ACDF - "Targeting issues, needs & opportunities of local Aboriginal communities"

MACH Energy Australia oversees commitments relating to the Aboriginal Community Development Fund (ACDF).

The Fund seeks to support partnerships that target issues, needs and opportunities which are priorities for local Aboriginal communities in areas such as health; economic development; cultural and community development and education in the Upper Hunter Valley, NSW.

For Applications or further information about the ACDF please visit: www.machenergy.com.au/acdf

Closing date for the next round of applications is 19th February 2021



MESABI SERVICE CENTRE

COXONS

NEWCASTLE

Specialists in Radiators, Aftercoolers & Oil Coolers

- Nosecone and Service Exchange
- Mining, Industrial and Rail
- Agricultural and Earthmoving
- On Highway Trucks and Automotive

1300 269 667

www.coxonsgroup.com.au

www.coxonsgroup.com

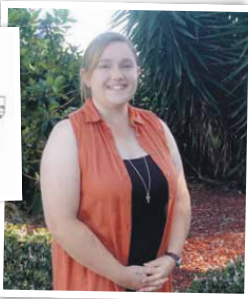
www.coxonsgroup.com

www.coxonsgroup.com

ROCKHAMPTON
TOWNSVILLE
NEWCASTLE

MACHINE MASTERPIECE'S

WHEN NADINE DAUNER ISN'T OPERATING TRUCKS ON THE JOB AT UNITED WAMBO JOINT VENTURE, THE TALENTED ARTIST IS DRAWING THEM DOWN TO THE SMALLEST DETAIL.



Although born in Sydney, Nadine Dauner has lived in the Hunter Valley for most of her life and after meeting Nadine and looking at her drawings we're more than proud to call her a local. Working in the mining industry for the past 5 years the Truck Operator has loved every second of it, now turning her love for her job and the machinery she works with into brilliant artworks.

Her mum being a watercolour artist, Nadine's talent and passion for art has followed her since birth. Picking up and following in her mother's footsteps creatively, Nadine found her own niche in drawing. "I struggled a little for a while there with what to draw," Nadine said.

"I was disheartened for some time until someone suggested to try drawing machinery, and as soon as I had a go at that I knew it was my thing."

Entering the mining industry was also a defining moment in Nadine's drawing direction, as she began drawing the very machines she was operating day to day. But she didn't stop there. Nadine has drawn excavators, dump trucks, old cars, motorbikes and almost everything in between. "I love bringing people's passions to life," said Nadine.

"YOU SEE PEOPLE WHO HAVE CARS THAT ARE THEIR PRIDE AND JOY, OR A RETIRED MINER WHO HAS OPERATED TRUCKS FOR THE PAST 40 YEARS, AND TO BE ABLE TO CREATE AN ARTWORK THAT REPRESENTS SOMETHING THEY ARE SO PROUD OF IS A GREAT FEELING."

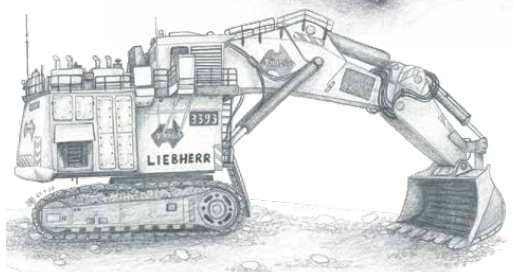
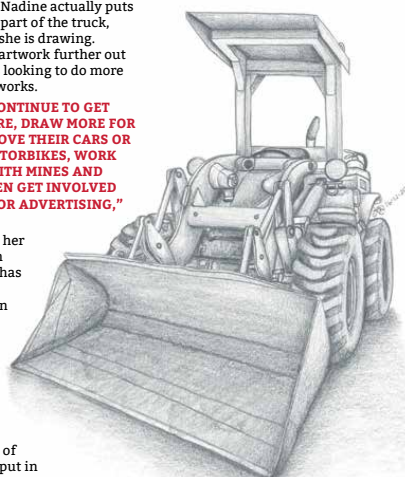
Drawing in bits and pieces, on days off and during breaks at work, Nadine said the time it takes to create each drawing varies depending on the machine and the

detail that goes into it. "If I were to sit there and draw a machine from start to finish, it would take me around 8-10 hours without a break," she said.

When you look at each of her drawings, you can see how much time and effort Nadine actually puts into every little part of the truck, machine or car she is drawing. Keen to get her artwork further out there, Nadine is looking to do more commissioned works.

"I'D LOVE TO CONTINUE TO GET MORE EXPOSURE, DRAW MORE FOR PEOPLE WHO LOVE THEIR CARS OR TRUCKS OR MOTORBIKES, WORK CREATIVELY WITH MINES AND MINERS OR EVEN GET INVOLVED IN DRAWING FOR ADVERTISING," SAID NADINE.

Needless to say, her passion for both mining and art has made for some great inspiration in her pieces. If you'd like Nadine to create a custom drawing of your car, work truck or pretty much any piece of machinery you put in



front of her, you can visit her Instagram @nadine.dauner.art or email her at nadine.dauner@gmail.com.

HELPING BUILD A BETTER AUSTRALIA.

Blackwoods is Australia's largest MRO (Maintenance, Repair and Operations), industrial and safety supplier with over 140 years' experience delivering end-to-end specialist solutions to the mining industry.

Blackwoods utilises cutting-edge technology and the support of qualified professionals to help you better manage inventory, reduce costs, free-up capital and improve productivity.

Our integrated onsite solutions are tailored to your unique requirements providing:

- Secure, reliable and immediate product availability
- Reduced usage rates and greater control over spend
- Improved accuracy of supply and shorter delivery times
- Reduced stock holding and obsolescence
- Onsite procurement, sourcing and customised reporting
- Limited capital outlay upfront with Blackwoods-owned product onsite
- Reduced traffic management requirement for the project



'AVE A LAUGH WITH

HUNTER VALLEY
Hydraulink
Hose and Fittings
BEST UNDER PRESSURE

Two brothers, Mason (4), and Daniel (5) are talking at the kitchen table while they wait for their mother to make them lunch. Daniel turns to Mason and says, "You know what, I think I'm old enough to start swearing now... I think I will say bloody, whenever I feel like it." Mason nodded, then said, "Yeah sounds good, and I'll say butt."

Their mother walked into the kitchen then turned to Daniel and asked, "And what would you like

for lunch today?" Daniel grinned then said, "Well mum, I think I'll have some bloody spaghetti."

Immediately his mother grabs him by the ear, washes his mouth out with soap, then smacks him and sends him to bed. Fuming she turns to Mason then asks, "And what do you want?"

Mason looks up at his mum and replies, "I don't know mum... but you can bet your butt it won't be spaghetti!"

02 6571 1625

hvhdraulink@bigpond.com | 2 Mathry Ct, Singleton NSW 2330



Call today 02 4966 2551

MINE SPEC

FLEET & LEASE

SERVICING

REPAIRS

BREAKDOWNS

TITAN
AUTO MAINTENANCE

30 years of experience
Private and Commercial
Mine Spec Supply & Install

Two & Four Post Hoists
Pink Slips & Blue Slips
Fully equipped workshop

25d Sandringham Ave, Thornton
workshop@titanauto.com.au

WWW.TITANAUTO.COM.AU

Blackwoods

13 73 23 | blackwoods.com.au

SUPPLIER INSIDER

DGI TRADING AUSTRALIA

Tell us about the business?
My name is Craig Smith and I'm the Workshop Manager at DGI Trading Australia. DGI supplies late model new, rebuilt and used OEM machinery and components to the mining sector. We specialise in the purchase and recycling of late model Caterpillar, Hitachi, Komatsu and Liebherr machinery for re-use in mining applications.

We're an international operation - our global supply network allows us to source hard-to-find parts and machinery from the most remote locations in the world. DGI services customers in over 30 countries - a large number of those right here in the Hunter Valley.

How long have you been doing business, and business in the Hunter Valley?
DGI has moved into its 13th year of operation in 2021. We've been working closely with mining businesses and sites in the Hunter Valley since day one, with many of these relationships

extending far beyond this point. Although our facility is just north of the Hunter, we have dedicated Business Development Managers on the ground here. We offer same-day express freight options, maintaining a seamless supply chain to the Hunter Region and minimising down-time for our clients.

Where did you start and how did you end up where you are now?
My career began with machining, fabrication and mechanical work for our family business in Gunnedah. I moved to the Hunter Valley in 2000, where I've spent 20 years in many workshop and heavy crew supervisor roles within mining operations such as Thiess and Glencore, across sites like Mt Owen, Ravensworth and Mt Pleasant.

In 2020 my wife and I made the lifestyle decision to make a sea-change to Port Macquarie, around the

time I came across to DGI Trading. This role combines industry and product knowledge with the lifestyle we sought, and we couldn't be happier on both fronts.

Describe a typical day at 'The office'.
Our facility in Kempsey is our central point for product works, warehousing and dispatch. We continually have stock arriving from



DGI WORKSHOP MANAGER CRAIG SMITH

around the world, so our workshop and logistics teams are focused on inspecting stock, undertaking necessary works and preparing and warehousing inventory for resale.

What's the best thing about the business?
It's really the ability to work not only internationally, but also remain closely connected to the Hunter Valley where I've spent the most part of my career and still have so many great relationships today.

What is the big news in your part of the mining industry right now?
Despite fluctuations, particularly around coal export, we continue to grow and are as busy as ever.

What are the biggest challenges facing your business?
Although a challenge shared by many, our business typically relies on the ability to jump on a plane

and fly to any number of countries to inspect mining equipment for purchase. As with much of the world in 2020, we have adapted to be able to continue to effectively source and supply mining equipment and components.

What is the biggest opportunity for your business right now?
Markets in 2020 highlighted the need to lower operational costs, giving us the advantage of being a cost-effective alternative to supply OEM components and machinery. The strain on global logistics seen last year has given us an opportunity to focus on our agility, particularly for customers such as those located within the Hunter.

Community or other causes close to its heart and values?

DGI supports communities around the world. Much like the Hunter region, the Macleay and Hastings Valleys where we live are small places, focused on a sense of community and supporting each other. We sponsor various local surf clubs and sporting teams, particularly those where our children participate. Internationally, we have sponsored local sporting teams like the Utah Grizzlies baseball team, through to industry events in Africa. We believe in actively supporting the communities in which we operate.

We recently sponsored Toby Price's Red Bull Finke Desert Race trophy truck, with whom we have a great relationship and love to watch and support his endeavours as I know everyone does!

Anything else you want to say?
In my time with DGI, I love being able to remain so close to the Hunter Valley relationships I have built over the years.

Who are you and what do you do?

I'm Nick Wild and I'm a Training Officer for Mines Rescue.

When did you start in the mining industry and what was your first job?

Having been raised in a mining family in the Hunter Valley, I myself commenced in the industry in 2008. My first job was an operator with a civil mining contractor, working on rehab projects on open cut sites. The role provided me with the skills needed to work with various pieces of machinery and I gained knowledge on the mining process. I was then successful in getting a cadetship at Hunter Valley Mines Rescue commencing in 2011. I think those early experiences were really the foundation for my career so far.

How different is your job now to what you wanted to be when you were a kid?

As a kid, I really wanted to join the Air Force or Police. The training side of my job is a world away from that. Our company's purpose is 'to protect' so I feel I am still making a difference through our safety training.

What's a usual day at work entail?

We generally start with a brief team meeting



MY MINING LIFE
NICK WILD

before moving into the day's training. We have a training plan for each course or topic to be delivered which is important to ensure that we give participants the best possible training experience and provide them with the competencies and outcomes they need. Our trainers call upon their own experiences and encourage participants to share theirs too which helps make the content more real, and relevant to the class.

What's the best thing about your job?
The job offers a lot of variety due to the range

of courses we offer and how and where we deliver the training. I also get to meet new people. Seeing them return for more training and how they have advanced their skills is really rewarding.

The worst thing?

Nothing. I am fortunate to work with a great team.

What's the biggest challenge you've had to overcome?

Having the confidence to back myself throughout my career has definitely evolved thanks to the different roles and opportunities I've had since I started in the industry.

What has been your proudest achievement?

Being able to come back to Mines Rescue as a Training Officer is a definite standout. I knew when I completed my cadetship in 2012 that that's where I wanted to be.

I am also extremely proud to have been part of Narrabri Coal's mines rescue team.

In 2018 we won the regional competition and went on to compete at the Australian Mines Rescue Competition in Queensland. The effort and teamwork we put in over the years was all worth it, and the mateship that was forged in the years leading up to making it there will last a lifetime.

What's something about your job that would surprise people to know?

Many people don't realise that Mines Rescue doesn't just service the mining industry. Our people have a vast array of skills and experience which enable us to offer training and consultancy services across many industries.

What's a funny story about work that you can tell?

There are many funny stories but none that are likely to be appropriate for this article. LOL

What do you do in your downtime?

Outside of work it's all about family. I have three active boys and so we try to get out camping and fishing in between sporting commitments.

The mining industry gets more than its fair share of criticism. What is your view of our industry and the impact is has?

Our industry is often overlooked for all the good it does in the community, both directly and indirectly. The employment opportunities and careers that relate to our industry, as well as the financial contribution to our communities is extraordinary. I'm proud to work in the mining industry and am extremely thankful for the rewards it has given me.

Process Equipment Wear Prevention Asset Management Engineering and Mechanical

HIC SERVICES

Providing industrial solutions since 1978

www.hicservices.com.au

plant repairs & maintenance

- Field service and breakdown support
- Mechanical and auto electrical repairs
- Complete asset management
- Light vehicle fleet maintenance
- Parts and equipment

OPEN CUT & UNDERGROUND SPECIALISTS

0447 357 760 | admin@cpplantrepairs.com | www.cpplantrepairs.com



L-R: AUNTY JEAN, MALCOLM FRANKS, RENEE MACDONALD, GLEN MORRIS AND MACH ENERGY ACDF CHAIRPERSON TONY JARRETT.

THE 'IN OUR OWN WORDS' ABORIGINAL ORAL HISTORY PROJECT AT MUSWELLBROOK REGIONAL ART GALLERY WAS RECENTLY LAUNCHED LAST MONTH THANKS TO SUPPORT FROM MACH ENERGY'S ABORIGINAL CULTURAL DEVELOPMENT FUND (ACDF).

The project began with a conversation many years ago and after much hard work the stories of 18 local Aboriginal people are now proudly displayed on the walls of the Muswellbrook Regional Art Gallery. In addition, the stories have been compiled into a beautiful hard cover book and are also available online. "The idea has floated around for many years," said Aunty Jean Hands. "The concept was to allow people to share their own stories in their own words and by doing

so raise awareness of our shared histories. All the participants are members of the local Aboriginal community who have honoured us by sharing their stories." "The end product is simply magical, and we are extremely proud to be able to share it. I hope everyone in the community finds the time to come along and see the display at the Muswellbrook Regional Art Gallery where it will be on view until April." The project came to fruition due to the collaboration of Muswellbrook

Shire Council, the ACDF, and with the help of the Muswellbrook Shire Council Reconciliation Committee and involved much community consultation.

"WE ARE VERY THANKFUL FOR MACH ENERGY FOR GETTING BEHIND THIS PROJECT AS WE COULD NOT HAVE DONE IT WITHOUT THEM," ADDED AUNTY JEAN. "IT'S PROJECTS LIKE THIS THAT WORK TOWARDS CLOSING THE GAP."

The MACH Energy ACDF was established in 2006 and since that time has invested more than \$4 million dollars into projects that benefit Upper Hunter Valley Aboriginal communities focusing on health, cultural and community development, economic

development and education.

Recent projects have included the creation of a cultural space at St Heliers Correctional Facility and a partnership with them that provides work opportunities for ex-inmates, the provision of a dance instructor for the Aboriginal dance group at St Catherine's High School, the two year employment of a youth worker for Singleton & Muswellbrook PCYC's, and cultural awareness training and financial assistance for local small businesses.

There's also plenty in store for 2021 with the highlight set to be the 2021 Cultural Spectacular. With the 2020 event cancelled due to Covid, this year it is going to be bigger than ever before with an amazing line up of artists.

'In Our Own Words' will be on display at the Muswellbrook Regional Art Gallery until April. It can also be viewed online at: UPPERHUNTER.WORKINGWITHINDIGENOUSAUSTRALIANS.INFO/

To find out more about MACH Energy's ACDF visit: WWW.MACHENERGYAUSTRALIA.COM.AU/ABORIGINAL-COMMUNITY-DEVELOPMENT-FUND/

Land + Underground + Aviation + Maritime



Specialising in Onsite Emergency Service Officers, Security Personnel, Accredited Training and Rescue Equipment



We Make Risky Operations Safer

In the world of high-risk operations, a strong safety capability and culture doesn't just save lives and limbs, it also delivers peace of mind.

Our team of experienced, operational safety and emergency management professionals work with you to embed high levels of safety capability in your organisation.

02 4283 9300

| www.riskresponse.com.au



RTO #90774



INCREASED CLEANING



HEALTH CHECKS



SOCIAL DISTANCING



TRAVEL LIMITS



PROTECTIVE SUPPLIES



ROSTER CHANGES

Keeping mine workers, families and communities safe.

minerals.org.au/covid-19



COMMUNITY GIFT



FAMILY HISTORY SOCIETY SINGLETON

THIS MONTH THE COMPLETE PARTS AND @ THE COALFACE \$500 COMMUNITY GIFT GOES TO FAMILY HISTORY SOCIETY SINGLETON AND THE AMAZING WORK THEY DO FOR THE HISTORY OF OUR LOCAL AND GREATER COMMUNITY.

The Family History Society Singleton (FHSS) is a not-for-profit organisation that has been around for almost 36 years, assisting Singleton locals and the greater community to learn more about their family history and ancestry. Its members have maintained an excellent library at the Singleton Mechanics Institute, 74 George Street Singleton where a wide range of family and local history resources are just waiting to be discovered, from resources covering Convict, Immigration and Parish to Pioneer Registers, Local Records, and Biographies and an extensive collection of family histories and information.

Under normal circumstances the library is manned by Duties Librarians who are only too willing to welcome you and point you in the right direction also undertaking research for people who cannot attend the library.

LIKE MOST ORGANISATIONS, COVID-19 AFFECTED THE FHSS GREATLY. ALTHOUGH THEY CONTINUED TO DO RESEARCH REQUESTS AS WELL AS OFFER GENERAL ASSISTANCE, THEY WERE UNABLE TO HAVE ANYONE VISIT THE LIBRARY RESULTING IN THE LOSS OF BASICALLY 12 MONTHS OF INCOME, ONLY JUST NOW ABLE TO HAVE MEMBERS VISIT BY APPOINTMENT.

Lyn MacBain, qualified researcher and the President of FHSS, is just one of the amazing volunteers who dedicates her time to help people discover more about who they are and where they come from.

The work these passionate researchers do is



something special. Their face-to-face approach to research and history uncovers backgrounds and history that is sometimes lost to technology. We commend the FHSS on their efforts to bring our community closer to our history – a deserving recipient of this month's community gift.

'AVE A LAUGH WITH HUNTER VALLEY **Hydraulink** Hose and Fittings **BEST UNDER PRESSURE**

I was driving home from work when I saw a sign that read: Lobster tails \$2. Immediately I pulled over and paid my \$2. Straight away the guy says, "once upon a time there was this lobster..."

02 6571 1625
hvhydraulink@bigpond.com
2 Mathy Cl, Singleton NSW 2330

WILLS WEEK

22-26 MARCH 2021



DO YOU NEED A WILL DRAFTED?

COST \$125 (\$225 PER COUPLE)

Book now to establish your first Will or have an existing Will updated by a qualified professional solicitor in your local area.

Thanks to the support of these solicitors who are donating their time in full, 100% of your booking fee will be donated to the Westpac Rescue Helicopter Service. Bookings are essential and close 26th February.

PARTICIPATING SOLICITORS	
Branxton	Shaw Bunner Legal
Cessnock	Coutts Lawyers & Conveyancers Emery Partners
Dungog	Amy Martin Legal
Kurri Kurri	McAllister Legal Service
Muswellbrook	Curtis Gant Betts Solicitors Hoffman & Associates
Score	Kate Mailer Solicitor
Singleton	22Ten Legal Aqua Legal & Conveyancing CDG Law Umbrella Legal

To find out more or to book online visit www.rescuehelicopter.com.au/willweek or call **1800 155 155**



THE MAN VAN

THE MEN'S HEALTH EDUCATION ROTARY VAN (MHERV) IS A ROTARY PROJECT MADE POSSIBLE BY FUNDRAISING, GENEROUS SPONSORSHIPS AND HARDWORKING VOLUNTEERS AND IT WILL BE SOON HITTING THE ROAD HERE IN THE HUNTER.

This custom purpose-built caravan is decked out with two consulting rooms and a full time Registered Nurse onboard and travels throughout the state offering free health screenings to regional and rural men.

In 2008, Rotarian Tony Mackenzie began discussions with the General Manager of Western District Hospital in Mudgee, Joy Adams, about the incidence of late presenting, poor health events among rural men.

With Joy's help and that of Registered Nurse Andrew Whale, Rotary began by borrowing an old caravan, which they took to towns in the western districts of NSW.

IT WAS DECIDED TO TRY TO SCREEN MIDDLE AGED AND OLDER MEN IN NSW RURAL COMMUNITIES TO SEE IF SIMPLE TESTS COULD IDENTIFY MEN'S HEALTH ISSUES EARLIER, THEREBY BRINGING THEM TO A DOCTOR BEFORE OTHERWISE TREATABLE CONDITIONS BECAME TOO SERIOUS.

At first they discovered a reluctance by men to be tested. "I'm ok ... don't need that" ... "She'll

be right" being the attitude used to excuse themselves from anything to do with their health. But as time and experience began to teach them, the team developed techniques to persuade men to be in it.

Rural men are notorious for being completely in the dark about the state of their health. For most, there is no culture to see their doctor for a regular check-up, indeed it could be said that many men are afraid to do so in case they are told something they wouldn't like to hear. Consequently, conditions like high blood pressure, high cholesterol and high blood sugar which have little or no apparent symptoms, can build up and lead to sudden unexpected death or long term incapacity.

THAT'S WHY SPENDING AS LITTLE AS 5 MINUTES IN THE MHERV VAN CAN ONLY BRING GOOD NEWS. EITHER THE TESTS SHOW NO REASON FOR CONCERN OR AT THE OTHER END OF THE SCALE IT MAY BE RECOMMENDED THAT IMMEDIATE MEDICAL ATTENTION BE SOUGHT FOR TREATMENT THAT WOULD BRING THE CONDITION UNDER CONTROL, POSSIBLY SAVING A LIFE!

This little idea has now turned into a success story. In the next 5 months, MHERV will visit 36 stops and help countless men. Perhaps you'll be one of them.

THE MHERV 2021 HUNTER LINE UP

Cessnock.....13th & 14th February
Singleton.....16th & 17th February
Denman.....19th & 20th February
Muswellbrook.....23rd & 24th February
Dungog.....26th & 27th February

For a full list of dates go to:
f MensHealthEducationRotaryVan
To make a much needed donation go to:
MHERV.COM.AU/PRODUCT/DONATE-TO-MHERV/

COOL CRIB WIN!

YOU ARE GUARANTEED TO ADD A LITTLE SWAG TO YOUR SHIFT WITH OUR INSULATED PVC CRIB BAG.

Made by Rugged Xtremes and in classic Coalface yellow, we reckon our crib bag will be as sought after as a Louis Vuitton.

FOR YOUR CHANCE TO WIN, SIMPLY SMS: COOL CRIB, YOUR NAME, AND YOUR EMAIL ADDRESS TO 0438 474 290.

Limit of one entry per person. By submitting an entry, you consent to the use of your contact details for promotional and marketing purposes.

DA GAMA INDUSTRIES
KURRI KURRI / AUSTRALIA
TUNGSTEN CARBIDE PRODUCTS BRAZING

IS IT TIME TO SWITCH YOUR BITS?

SAVE TIME AND MONEY WITH TOUGHER TIPS FROM DA GAMA!

Da Gama offer the highest quality Tungsten Carbide, or Diamond tip drill bits with tougher, thicker, coatings than most on the market. Tougher tips not only make your job quicker and easier, they can also provide up to 20% more wear than their counterparts – saving you operational costs. Da Gama's sharpening and refurbishment service can also save you up to 50% of the cost of buying new bits while making the most of your resources.

- Drill bit sharpening and refurbishment
- CNC milling
- Tungsten Carbide Brazing
- Drill bits for underground mining
- Conveyor belt cleaners

WE DARE YOU TO COMPARE DA GAMA'S TO YOUR CURRENT DRILL BITS AND DISCOVER SUPERIOR QUALITY


+61 2 4936 4792
4 Railway Parade,
Kurri Kurri NSW 2327 Australia

CONTACT DA GAMA TODAY
TO START YOUR TRIAL OF DA GAMA DRILL BITS

info@dagama.com.au
WWW.DAGAMA.COM.AU

KEEP AN EYE ON WHO'S AT YOUR FRONT DOOR WITH THE ARLO ESSENTIAL WIRE-FREE VIDEO DOORBELL.

You'll never miss a visitor again with the Arlo Essential Doorbell. With more clarity and wider viewing angle than a traditional video doorbell and object detection to detect between a person, package, vehicle or animal, you'll feel secure knowing exactly what's going on at your door. When the doorbell is pressed you receive a video call and can see and speak to your visitors wherever you are.



RING MY Bell

WWW.ARLO.COM

ICE ICE BABY

IF YOU'RE LOOKING FOR A CAMPING COOLER TO KEEP YOUR BEERS AND SNAGS ICE COLD FOR DAYS ON END WITH JUST ONE LOT OF ICE, YOU NEED TO GET YOUR HANDS ON A YETI TUNDRA HARD COOLER.

It's a pain in the backside having to leave your camp spot to go to the servo and buy fresh ice for the esky. YETI Tundra Hard Coolers take the hassle out of camping with ice still left over after a solid week of camping. That means you can sink more ice-cold tins without the stress of running out of ice. Because let's be honest, there's nothing worse than a warm beer.




WWW.ARLO.COM

IT'S NO SECRET THAT COVID-19 HAS MADE WEARING FACEMASKS THE NEW NORMAL AND WE NOW SEE THEM EVERYWHERE, BUT I PROMISE THAT YOU'VE NEVER SEEN A FACEMASK LIKE THIS.

SMART Mask

Razor has created what they claim to be 'the worlds smartest mask', and I think they may have just done that. Project Hazel is Razor's latest release - a facemask design focusing on five key areas to maximise safety and quality of life. With a surgical N95 respirator, active ventilation and auto-sterilisation function it's one of the safest designs on the market. The mask has a clear, transparent design so that people can see you speak, low light mode when it's dark and voiceamp technology to ensure no muffled speech. This baby has sustainable and comfortable features, and you can even personalise your mask with a choice of 16.8 million colours and iconic effects. I'm even going so far as to say this is the coolest mask I have ever seen.




WWW.RAZOR.COM

ESCAPE REALITY

MANY OF US HAVE BEEN STUCK AT HOME AT SOME POINT OR ANOTHER OVER THE PAST 12 MONTHS, SO IT MIGHT BE TIME TO INVEST IN A HEADSET WITH THE ABILITY TO TAKE YOU TO OTHER WORLD'S RIGHT FROM YOUR LIVING ROOM.

The Oculus Quest 2 is a virtual reality headset that has been taken to the next level. With no wires and no limits, this is the most immersive all-in-one Oculus Virtual Reality system yet. From entering the world of Star Wars and exploring the wilds of Batuu, to climbing mountains anywhere in the world, to coming face to face with a Velociraptor in the Jurassic World Aftermath, the places and experiences to explore are endless.



WWW.OCULUS.COM

POOL PICNIC PARTY

WHY STAY ON LAND FOR LUNCH WHEN YOU CAN DINE ON THE WATER WITH THE FLOATING PICNIC TABLE BY RHINO BUILDING PRODUCTS.

This unique and lightweight product comfortably seats 4 people and is perfect to take to your next pool or beachside party. Each end of the table has a set of eyehooks to strap your swim gear and cooler and there's cup holders in each corner to keep your beverages steady on the moving water. Having lunch on the water has never sounded so fun.



WWW.RHINOBUILDINGPRODUCTS.COM

CRACK THE CODE

IT'S A WELL KNOWN FACT THAT MEN ARE IMPOSSIBLE TO BUY GIFTS FOR, SO MAN CRATES HAVE COME UP WITH A CODE THAT ANY MAN WOULD LOVE TO CRACK.

Their solution is to buy your man a concrete brick. It may sound a bit boring but it's far from your average brick. The gift comes with a two inch concrete brick, spring-hinged goggles and a ball-peen hammer and only one instruction - destroy the brick. Once fully demolished they will be left with a code that can be redeemed for a gift card from brands such as Nike, Amazon and Gamestop. If they want their present they will have to fight their way through concrete for it.



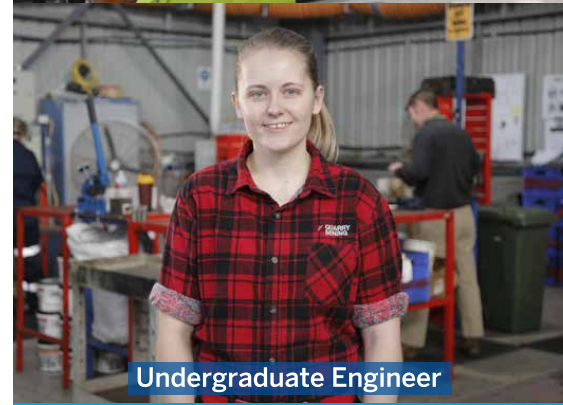
WWW.MANCRATES.COM



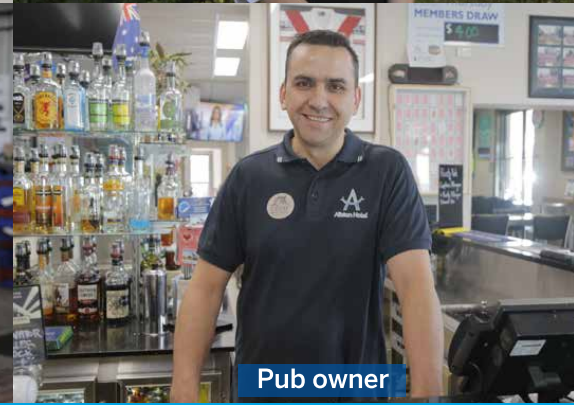
Electrical coordinator



Real estate agent



Undergraduate Engineer



Pub owner

Helping keep the community safe and the economy moving.

Things are pretty tough. But without mining, it'd be a lot tougher.

During the pandemic, mines all over NSW have kept going. And that's helped to keep our state going too.

All of our mines have strict COVID-safe practices.

Which means thousands of businesses supplying the mines and local businesses across our community can keep going too.

nswmining.com.au/covid-19-community



MECHANICAL SERVICES

CRJ MAINTENANCE

MECHANICAL SERVICES

FOR ALL YOUR MECHANICAL NEEDS
PROVIDING SERVICING AND MAINTENANCE FOR ALL MAKES AND MODELS

Our team of experienced technicians ensure all work is carried out to the highest standard. Whether its a car, 4x4, truck, a piece of plant or equipment, we've got it covered.

SERVICES

- All automotive servicing and repairs
- Auto electrical services 4x4 specialists
- AIS inspection station HVAIS inspection station
- Mining light and medium vehicle maintenance specialists
- ECU remapping and tuning
- Truck servicing and repair Field Service
- Parts & Accessories Tyres and Batteries
- Affiliated with most fleet companies



1-3 WALLARAH ROAD MUSWELLBROOK
02 6542 5196

www.crjmaintenance.com



PIRTEK

Possible Causes
Foundation of Australia
Major Partner

ST VINCENTS
HOSPITAL
Peter Dutton Memorandum
Research Unit

FIGHT A FISH

FOR MEDICAL RESEARCH

PROCEEDS GO TO OUR CHARITY PARTNERS

OVER 2 DAYS!
SATURDAY 17 & SUNDAY 18 APRIL, 2021
AUSTRALIA WIDE

\$240,000

IN CASH & PRIZES

YOU COULD WIN

Stacer 469 Outlaw Side Console



... plus other great prizes

REGISTER NOW FOR ONLY \$25
PIRTEKFISHINGCHALLENGE.COM.AU
* RECEIVE A LIMITED EDITION CAP, BRAG MAT & STICKER

For full terms, conditions and licensing, log on to pirtekfishingchallenge.com.au. Permit No: ACT Permit No TP 2001002, NSW Permit No TP1900940, SA Permit No 7201954

Bathurst
1/112 Durham St. Bathurst
(02) 6355 7004

Dubbo
42 Bourke St. Dubbo
(02) 8687 9600

Gunnedah
40-44 Allgayer Dr. Gunnedah
(02) 6742 4988

Maitland
129 Racecourse Rd. Rutherford
(02) 4932 1120

Mudgee
36 Sydney Rd. Mudgee
(02) 6372 3454

Muswellbrook
88 Maitland St. Muswellbrook
(02) 6543 4255

Newcastle
20 Munibung Rd. Cardiff
(02) 4954 5933

Orange
97 Elsham Ave. Orange
(02) 6360 2944

Singleton
14 Maskey Rd. Mt Thorley
(02) 6574 2782

Tamworth
4/61 Barnes St. Tamworth
(02) 6762 0600

Bathurst
1/112 Durham St. Bathurst
(02) 6355 7004

Dubbo
42 Bourke St. Dubbo
(02) 8687 9600

Gunnedah
40-44 Allgayer Dr. Gunnedah
(02) 6742 4988

Maitland
129 Racecourse Rd. Rutherford
(02) 4932 1120

Mudgee
36 Sydney Rd. Mudgee
(02) 6372 3454



134-222
National Service 24 hours - 7 days
www.pirtek.com.au

SAFETY PRIORITIES

THE NSW RESOURCES REGULATOR HAS PUBLISHED THEIR JANUARY - JUNE 2021 COMPLIANCE PRIORITIES WHICH SETS OUT THE KEY COMPLIANCE PRIORITIES FOR THE NEXT SIX MONTHS.

The publication not only sets out the key compliance priorities, but aims to increase transparency, community and industry confidence in their regulatory activities, and to also increase levels of voluntary compliance.

The six compliance priorities are:
RESPIRABLE DUST - REVISION TO EXPOSURE STANDARDS

The management of airborne contaminants has been a key focus area over recent years. With the implementation of the revised exposure standards for silica and respirable dust, and a new exposure standard for diesel exhaust emissions, airborne contaminants was a priority project between July and December in 2020 and will continue to be a focus area for the first half of 2021. The

interaction and communication between mine operators and contractors has been a contributing factor in dangerous or high-potential incidents. This project will focus on the implementation of contractor safety management systems, the mutual review of the safety management system as required under clause 22 of the Work Health and Safety (Mines and Petroleum Sites) Regulation 2014 and the process of determining which safety management system the contractor will be working under.

ENTANGLEMENT AROUND CONVEYORS

This project focuses on the risk of entrapment around conveyor belt systems, particularly at underground operations and coal handling and preparation plants.

FOR MORE INFORMATION ON THE COMPLIANCE PRIORITIES GO TO WWW.RESOURCESREGULATOR.NSW.GOV.AU

focus for this period will be planned inspections, industry engagement and following up on exceedances.

MANAGEMENT OF HAZARDOUS CHEMICALS

The Regulator has completed a wide-scale review of their approach to the regulation of hazardous chemicals in the mining industry and released a position paper outlining the outcomes of that review, and their approach to regulating hazardous chemicals into the future. This project will incorporate planned inspection programs across each sector, presentations at industry engagement forums and publication of guidance material and fact sheets.

CONTRACTOR MANAGEMENT

From recent regulatory activities it has been identified that the

OPERATIONAL REHABILITATION REFORMS

The Regulator is improving compliance and reporting requirements for rehabilitation through the development of a new regulation under the Mining Act 1992, which will replace mining lease conditions relating to rehabilitation and set clear, achievable and enforceable requirements for rehabilitation.

PROGRESSIVE REHABILITATION

The Regulator will be focusing on how a mine site is designing and constructing final landforms to achieve sustainable rehabilitation outcomes. Targeted assessments will be undertaken following a risk profiling review.

SAFETY STANDARDS

MINING COMPANIES WILL START 2021 UNDER A NEW INTERNATIONAL ORGANISATION FOR STANDARDISATION (ISO) STANDARD, ISO/PAS 45005, TO ENSURE SAFE OPERATIONS DURING THE COVID-19 PANDEMIC.

ISO/PAS 45005, occupational health and safety management - general guidelines for safe working during the COVID-19 pandemic was developed by a panel of experts from 26 countries.

It aims to manage risks arising from COVID-19 to protect the health and safety of employees, stating that workers "should not be required to work unless these measures have been implemented".

Under the new standard, organisations must understand the risks of its activities to visitors, customers, service users and the public.

It must also assess external issues that may impact its workers' health and safety, such as the prevalence of COVID-19 within the local community, local, regional, national and international circumstances, along with the availability of services such as testing, treatments, hand sanitisers, masks, thermometers and personal protective equipment (PPE).

ISO/PAS 45005 also instructs organisations to consider how their employees travel to and from work, such as fly-in, fly-out mining operations.

FOR MORE INFORMATION ON ISO/PAS 45005 GO TO WWW.ISO.ORG/OBP/UI/#ISO:STD:ISO:PAS:45005:ED-1-V1:EN

TAKE THE PRESSURE DOWN

HAD YOUR BLOOD PRESSURE CHECKED RECENTLY? IF NOT, PUT A BLOOD PRESSURE CHECK ON TOP OF YOUR 2021 "TO DO" LIST.



Stroke Foundation Clinical Council Chair Professor Bruce Campbell said having your blood pressure checked was easy, painless and potentially life-saving, but was too often overlooked.

"I know the new year is a time for resolutions and a fresh start for many," Professor Campbell said. "This year, rather than jumping straight into long-term health goals like getting fit or losing a few kilos, start with a blood pressure check at your doctor or pharmacy.

"IT'S LIKE CHECKING YOUR CAR IS IN GOOD WORKING ORDER BEFORE A BIG ROAD TRIP," HE SAID.

High blood pressure, otherwise known as hypertension, is a key risk factor for stroke, and the most modifiable. New Stroke Foundation figures revealed more than 4.7 million Australians were living with high blood pressure and most don't even know they have it.

So what is blood pressure? As blood

is pumped by the heart around the body, the pressure with which it pushes against the walls of blood vessels changes. When the heart is squeezing blood into the arteries, the pressure is high. When the heart is relaxed, the pressure is lower.

Your blood pressure is a measurement taken of the highest reading and the lowest reading. It is given as 2 figures - highest (systolic) over lowest (diastolic). Systolic is the pressure in the artery as the heart contracts. This is represented by the top, higher number. Diastolic is the pressure in the artery when the heart is relaxing and being filled with blood. This is represented by the bottom, lower number.

Your blood pressure is high if the reading is higher than 140/90 mmHg, which is considered to put you at higher risk of having a heart attack or stroke. This is also known as hypertension.

Your blood pressure is also important because if it is too high, it affects

the blood flow to your organs. Over the years, this increases your chances of developing heart disease, stroke, kidney failure, diabetes, eye disease, erectile dysfunction and other conditions.

Most people with high blood pressure have no symptoms and feel quite well. This is why it's important to see your doctor and have your blood pressure checked regularly, especially if you have any high risk factors such as smoking, a sedentary lifestyle, are overweight or have a poor diet.

"HIGH BLOOD PRESSURE HAS NO IMMEDIATE SYMPTOMS. YET OVER TIME IT PUTS EXTRA STRESS ON BLOOD VESSEL WALLS. THIS CAN CAUSE THEM TO NARROW OR BREAK DOWN, EVENTUALLY LEADING TO A STROKE," PROFESSOR CAMPBELL SAID.

"High blood pressure is also a risk for other cardiovascular conditions and increases the risk of death from the coronavirus (COVID-19)."

High blood pressure can impact people of all ages, but it can be managed through medication, minimising salt intake and living a healthy, active lifestyle.

"Research has shown the number of strokes would be almost cut in half (48 percent reduction) if high blood pressure alone was eliminated," Professor Campbell said.

"Give yourself the best chance

possible to live a healthy life in 2021 and beyond. Learn about your risk and continue to monitor your blood pressure regularly."

BOOST YOUR BODY!

NEED A BOOST TO YOUR ENERGY? HEADING INTO SUMMER, IT'S IMPORTANT TO GIVE YOUR BODY WHAT IT NEEDS!

ElectrAAte has the perfect blend of Amino Acids and Electrolytes to keep you hydrated and feeling at the top of your game!

To experience why their customers rave about their products, one lucky reader will receive a tub of ElectrAAte (valued at \$65).

FOR YOUR CHANCE TO WIN, SIMPLY SMS: ELECTRAATE, YOUR NAME, AND YOUR EMAIL ADDRESS TO 0438 474 290.

innovATE
LEADER IN AMINO ACIDS

By submitting an entry, you consent to the use of your contact details for promotional and marketing purposes. Limit of one entry per person.



CO-CREATING INNOVATIVE SOFTWARE WITH INDUSTRY LEADERS



REDUCE COST

IMPROVE SAFETY

INCREASE PRODUCTIVITY

WALDON
IMPROVING OUTCOMES

waldonservices.com

COREPLAN

Lighthouse

A BEAST IS BORN

THE LAST 20 YEARS HAVE SEEN SIGNIFICANT CONSOLIDATION IN MANUFACTURERS OF LARGE SCALE MINING MACHINES WITH THE EMERGENCE OF THE 'BIG FOUR' THAT INCLUDE CAT, KOMATSU, LIEBHERR AND HITACHI.



PHOTO CREDIT: WWW.THECONSTRUCTIONINDEX.CO.UK

However, in acceptance testing averaged 5,494 bank cubic yards an hour and 29 seconds per pass, a remarkable achievement in the knowledge that the bigger QSK60 and 3516B engines were to come. Even before their repowering, Syncrude was so impressed with the shovel's performance that they purchased the first four that rolled (crawled) off the production line.

Today, a far more extensive array of large hydraulic excavators exist. Despite their emergence (the likes of the Liebherr 9800 and Hitachi's EX8000) the Caterpillar 6090 remains the largest hydraulic shovel in its class. Sporting a bucket payload of 93.6t it is an impressive machine that with its counterparts, has taken it right to the rope shovels.

With increased life spans, greater mobility and lower initial price points, these machines are increasingly becoming the 'digger of choice' for mine operators. With Cat now the maker's marque, one wonders the next evolution in store for the 6090. Could we see an upgrade of engines (or at least engine option) with the C175, only time will tell...

ORIGINS ARE FAR FROM AMERICAN, WITH THE MACHINE DESIGNED AND MANUFACTURED BY O&K IN DORTMUND, GERMANY.

It was conceived with the emergence of the 240T haul truck, where O&K felt it needed a hydraulic excavator capable of loading these trucks in three passes. Forming a cooperation committee with Syncrude (think oil sands in Canada), this digger took an incredible 18 months to produce and was in dirt by 1997. Determined as requiring a bucket in the 40 cubic meter range, O&K blessed it the RH400.

Initially fitted with Cummins K2000E engines, the first two diggers were considered underpowered.

An example of this consolidation was the sale of Orenstein & Koppel (O&K) to Terex Mining in 1998, that was then acquired by Bucyrus International in 2010 and consumed soon after by Caterpillar Inc in 2011.

Each a formidable brand in their own right, these companies laid the foundations to the many technologies (and equipment) found in mining today. O&K's RH400 is one such machine, that since 1997 has dominated its category in size and longevity.

KNOWN TODAY AS THE CATERPILLAR 6090 AND WEIGHING IN AT A MIND-BOGGLING 1,000T'S, THIS FACE SHOVEL IS A SIGHT TO BEHOLD. ALBEIT NOW YELLOW, IT'S

COMPONENTS ONLY

THANKS TO COMPONENTS ONLY, OUR HEAVY EQUIPMENT EXPERTS

We are offering a **15% DISCOUNT** on Conveyancing and Wills packages for **COAL MINERS**

SERVICES

- Coal Mining Workers Compensation
- Family Law
- Wills & Estates
- Conveyancing
- Criminal and Driving Offences
- Civil Matters

So how do you choose a tyre? Firstly, make an honest assessment of your intentions with the vehicle. As with most 4WD modifications - to gain off-road ability, it's generally going to sacrifice some on-road drivability, so knowing exactly what your priorities are and what you're prepared to sacrifice will make the choice easier.

There's a lot to know about tyre technology, but for this brief article we will look at three major factors for choosing a tyre - tyre size, tread types, load ratings.

Fitting oversized tyres increases the ground clearance of the vehicle making it more capable off-road but there are lots of things to take into consideration. Firstly, is the legality. This varies state to state but in NSW, any increase in tyre diameter must not exceed 7% of the manufacturer's specified largest diameter option for that model vehicle, as listed on the vehicle's tyre placard.

Tyre width must also remain in-line with the vehicle's body work and be adequately protected by the mudflaps with an overall track width increase of no more than 50mm for 4WD vehicles. Generally, anything that's road-legal won't affect your insurance, but it always pays to check with your insurance company before doing any modifications.

Next, consider how the larger tyres affect handling and performance of the vehicle. The increased sidewall size of the tyre will lean over more while cornering, leading to less responsive steering. Keeping it within legal limits will reduce this, but you still should adapt your driving style to suit.

The larger diameter tyres will also reduce acceleration responsiveness and cause premature wear on components such as clutches due to requiring more effort from driveline components to turn the bigger tyres. Certain vehicles will also have limitations on tyre sizes, so it pays to speak to an expert on your particular vehicle.

GET A GRIP

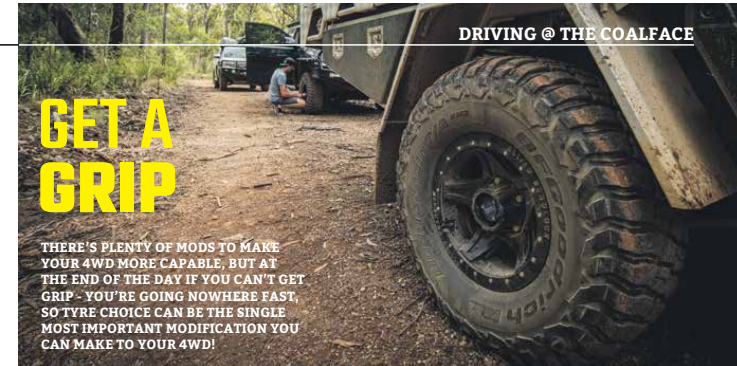
THERE'S PLENTY OF MODS TO MAKE YOUR 4WD MORE CAPABLE. BUT AT THE END OF THE DAY IF YOU CAN'T GET GRIP - YOU'RE GOING NOWHERE FAST, SO TYRE CHOICE CAN BE THE SINGLE MOST IMPORTANT MODIFICATION YOU CAN MAKE TO YOUR 4WD!

THE NEXT FACTOR IS TREAD TYPES. THE THREE MAIN TYPES OF TYRES FOR 4WDs ARE HIGHWAY-TERRAIN (HT), ALL-TERRAIN (AT) AND MUD-TERRAINS (MT). MOST 4WDs COME STANDARD WITH AN HT TYRE OR A VERY ROAD-ORIENTATED AT TYRE AND ARE GENERALLY NOT CONSIDERED SUITABLE FOR ANYTHING MORE THAN DIRT ROADS.

Generally speaking, the more aggressive the tread pattern on a tyre, the noisier it will be on-road, the faster it will wear on-road (tread compounds can also be a factor) and the higher the rolling resistance will be, which can lead to higher fuel consumption. However, the flip side is off-road grip.

Most good quality AT Tyres will work well on the beach, handle most off-road situations and still handle quite well on the road. However, if you are thinking of doing some really serious off-roading and lot's of it, then an MT tyre might be better suited. There are also some hybrid style tyres on the market that offer features off both, so it's worth speaking to an expert or doing plenty of research on the features of each tyre.

The load rating is another important factor.



Most after-market tyres developed for the 4WD industry these days are light truck (LT) rated but it's important to insure when fitting new tyres that they carry an "equal to" or "greater than" load rating than what's specified on the vehicle's tyre placard. This should ensure the tyres handle the weight of the vehicle and any additional weight, right through the maximum Gross Vehicle Mass (GVM).

Any tyre service or 4WD accessories shop should be able to give you all this information about the tyres they sell, so make sure you ask the questions. New boots for your 4WD should be high on your shopping list and will greatly improve your 4WDs capabilities, so you can spend less time getting recovered and more time enjoying the great outdoors.

THANKS TO TJM HUNTER VALLEY, OUR 4WD EXPERTS

TJM 4X4 EQUIPPED Hunter Valley

Life can get complicated but we are here to assist with your legal needs.



Umbrella Legal
YOUR LEGAL NEEDS COVERED

NEWCASTLE

264 Main Road, Cardiff 2285

SINGLETON

Suite 5, 127-129 John Street, Singleton 2330

PO Box 173, Cardiff 2285

T. 02 4911 2300
M. 0498 052 938

www.umbrellalegal.com.au

130 NEWCASTLE RD
WALLSEND.

49 511 184

VEHICLE PROTECTION.
GVM UPGRADES.
SUSPENSION.
SNORKELS.
CANOPIES.
WINCHES.
WHEELS.
TYRES.
ROOF RACKS.
CAMPING GEAR.
DRIVING LIGHTS.
MINE-SPEC FIT-OUTS.



HUNTER VALLEY
tjm@tjmhuntervalley.com.au





Data MASTER

BANLAW'S ON-BOARD (BOB) PORTABLE DEVICE ENABLES MINE SITES TO AUTOMATICALLY CAPTURE AND ANALYSE USAGE AND CONSUMPTION DATA FOR EVERY FUEL-CONSUMING ASSET.

Currently, data collection is a manual process that is time consuming, requires a different method for each type of mining equipment and is prone to errors. Inaccurate data and poor visibility contribute to unscheduled breakdown events, excessive fuel usage, and underutilised assets. BOB overcomes these issues by delivering an automated, unified data collection process.

WWW.BANLAW.COM

MIGHTY Magnet



IT'S IMPORTANT TO PROTECT YOUR CRUSHERS AND EXPENSIVE PLANT EQUIPMENT ON SITE AS WELL AS YOUR CREW, AND THAT'S WHERE THE MSA MAGNETICS OVERBELT MAGNETS COME IN.

Many mine sites operate in regional or remote areas which is why prevention of downtime and reduction of maintenance is essential. MSA Overbelt Magnets improve product purity by effective extraction of contaminants such as roof bolts, pins, drill rods, earthmoving equipment parts and scrap. These self-cleaning magnets are also designed, tested, and assembled in Australia using as many local components as possible.

WWW.MSAMAGNETICS.COM.AU

POPULAR POLES

ULTRASWING LIGHT POLES® BY PHOENIX ENGINEERING MAKE A MINER'S LIFE EASIER WITH TOOL-LESS OPERATION AND EASY INSTALLATION.

Needing only a single person to operate and no tools, Ultraswing Poles save both time and money and in turn increase overall productivity. These bad boys come fully assembled with easy access, 360 degree rotation, no clash zones and 6 safety stop positions for increased operator safety.



WWW.PHOENIXEMS.COM.AU

FUEL UP

A-FLO HAVE DEVELOPED YOUR TOTAL REFUELING SOLUTION IN A BOX WITH THEIR ULTRAFLOW MECHANICAL DIESEL BOWSER.



The ULTRAFLO Mechanical Diesel Bowser has a 240V self priming vane pump with flow rates up to 90L/min, complete with a built-in nozzle holster with an automatic pump stop. It includes a 4M x 1" ID delivery hose, automatic nozzle and 4 digit flow meter and optional pedestals to keep your tank full and your equipment moving.

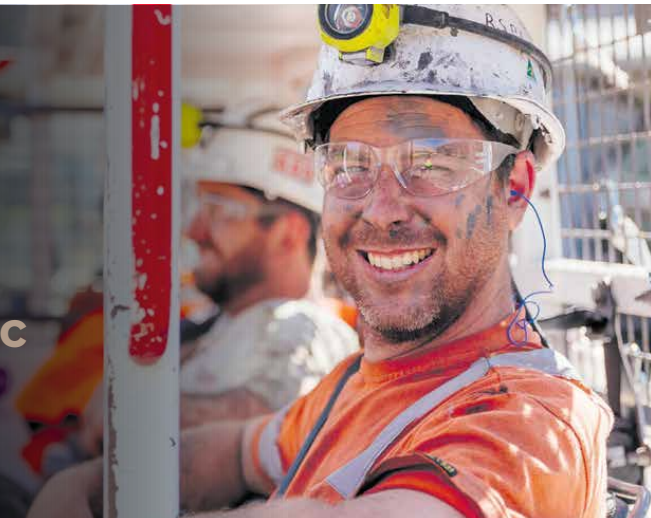
WWW.AFLO.COM.AU



GLENCORE'S CONTRIBUTION ADDS UP FOR HUNTER COMMUNITIES



11,479
flow on jobs
\$3.6 billion
total economic
activity



Glencore has been a part of the Hunter community for more than 20 years. Our Australian coal business is headquartered here, and our people are proud of the positive contribution we continue to make in the region. In 2019 Glencore's operations created \$3.6 billion in total economic activity for Newcastle, Lake Macquarie, Cessnock, Maitland, Port Stephens, Singleton and Muswellbrook.

To see how our contribution adds up, visit glencore.com.au/contribution.

GLENCORE

Explosion Proof submersible pumps

Forged from the elements themselves ...

Truflo Pumping Systems' Explosion Proof Submersible Pumps are an investment in superior design, advanced engineering and precision manufacturing providing new levels in safety standards with outstanding dewatering performance – built for demanding underground mining.

- ▶ IECEx Certificate of Conformity for Explosive Atmospheres
- ▶ Robust Long-Lasting Build Componentry
- ▶ Mechanical Seals in Oil Reservoir
- ▶ Superior Wear Resistance and Longevity
- ▶ Integrated Cooling System



IECEX CERTIFIED



When it matters
It pays to partner with the best
The explosion proof submersible pump that provides a better solution.

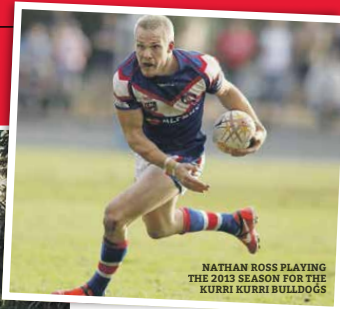
FREECALL AUSTRALIA
1800 813 677
www.truflopumps.com.au

BACK FROM RETIREMENT

NATHAN ROSS HAS ANNOUNCED HE IS STEPPING BACK ONTO THE FOOTY FIELD, RETURNING TO THE KURRI KURRI BULLDOGS FOR THE 2021 SEASON.



NATHAN WITH HIS PARTNER NIKA, DAUGHTER WILLOW, 3 AND SON ZIAH, 7



NATHAN ROSS PLAYING THE 2013 SEASON FOR THE KURRI KURRI BULLDOGS

love with the sport.

"My body is holding up really well and although I'm not currently the fastest in the game, I know I have the footy smarts to back me," said Ross.

"With 2 years away from the game, I've found alternate ways to keep fit without it being too hard on my body and if anything, I've been able to stabilise my pelvis even better than before."

It wasn't just his mates that made Nathan want to play this year's season. "My main motivation is my kids," he said.

ROSS HAS TWO CHILDREN ZIAH, 7 AND WILLOW, 3. "WE WERE SITTING ON THE COUCH ONE DAY AND MY SON SAID, "DAD I WANT TO SEE YOU PLAY FOOTY AGAIN", " NATHAN SAID.

"That was the main reason for me coming out of retirement, to make them proud."

With his kids cheering him on from the sideline, the charismatic player is sure to be a powerhouse this season.

HE EVER RETURNED TO LOCAL COMPETITION. "I WANTED TO MAKE SURE I GOT THROUGH PRE-SEASON BEFORE THE NEWS GOT OUT THERE," HE SAID.

Kurri Kurri coach Mitch Cullen was keen to get Ross back on board along with his experience playing for the Knights.

Ross played 60 games for the Newcastle Knights after being told by Wayne Bennett that Rugby League wasn't the right career him. Making his NRL debut in 2015. He's now heading back to the team that made him fall back in

Since his medical retirement almost 2 years ago Nathan Ross has had 4 operations to get his body back into shape, now ready to take back to the field.

Ross announced his retirement in 2019 due to a groin and pelvic injury, heading into his current role as Health, Safety and Wellbeing Coordinator at CH4 Drilling. "I love my job; I won't be leaving it any time soon," Nathan said.

BUT NATHAN HAS KEPT THE PROMISE HE MADE TO HIS MATES BACK IN 2013 - HE WOULD COME BACK AND PLAY FOR KURRI IF

'AVE A LAUGH WITH HUNTER VALLEY Hydraulic Hose and Fittings

BEST UNDER PRESSURE

My boss arrived at work in a brand-new Lamborghini.

I said "Wow, what an amazing car!"

My boss smiled, then said, "If you work hard, put in all your hours, strive for excellence, and increase your workload... I'll be able to get a better one next year."

02 6571 1625

hvhyaurlink@bigpond.com

2 Mathry Cl, Singleton NSW 2330

DDA | RiteDrill.
DRILL DOCTORS

BARE CHASSIS REBUILDS

We offer full bare chassis strip and rebuild to your requirements!

Service available anytime and in any weather:

A dedicated team of Boiler Makers, Drill Technicians, Drill Electricians, On-Site Planners, Engineers and Technical Support.

We offer:

Full Undercover Rebuilds
3.2 Tonne Overhead Crane
Mobile Paint Booth
Hot Wash
Acid Bath
Parts Washer

Hot Water Pressure Cleaner
Custom Manufacturing
System Control Change
Stock Parts Available
16 Tonne Franna
Fork Lift



COMPLETE

CALL US TODAY 02 6571 3690 - 24/7 spare part availability

Email: sales@drilldoctors.com.au, admin@ritecorp.com.au | Visit: www.drilldoctors.com.au, www.ritedrill.com.au | Warehouse: 60 Enterprise Crescent Singleton, NSW 2330

TAKE THE BAIT

WHAT A START TO 2021. SERIOUSLY, COULD THE WEATHER AND THE FISHING GET ANY BETTER. WITH SO MANY GREAT OPTIONS FOR FISHING THE ONLY PROBLEM IS FINDING ENOUGH TIME OFF WORK TO GIVE THEM ALL A CRACK!



FISHING FROM THE SAND CONTINUES TO BE THE PICK OF DESTINATIONS TO WET A LINE THIS MONTH AS THE PLUS SIZED JEWIE MADNESS CONTINUES.

big numbers being encountered off Port Stephens. The car park and Norah canyons have been a little slow to fire so far with the odd fish turning up but of course this can all change overnight. The Fads are holding plenty of fun sized Dolphin fish but putting a bit of time in throwing baits around the fish traps in 80 - 90 metres east of Cabbage Tree

and Boughton Islands has been providing some bigger fish.

Long Tail Tuna - these speedsters are yet to show so far this summer, I'd say they are a bit lost swimming though the filthy water further north. Once they find their bearings we will see them call Port Stephens home for a few months.

Also, on the inshore Kingfish have been reacting well to live baits along the shallower reef edges and around the islands. Trag and Snapper are hanging around the deeper reef

and if this was all too much to take in then of course it's also the time we see an abundance of Flathead hanging along the 40/50-metre lines.

ESTUARIES

We probably haven't seen Prawns in the numbers we have seen over the last month in a few years. It's really amazing what a bit of rain can do! We are honestly seeing 5 years of prawns at once and this amazing run should continue now well into Autumn.

The fishing side of things has been on fire also with Flathead, Whiting, Bream and plenty of School Jew moving about all the local water ways. The Squid have been a little harder to find although the water is beginning to clear back up so should really start to become a worthy target option.

BEACHES

The beaches are also a hit with plenty to choose. From Whiting and Bream throughout the day to Tailor, Salmon and Jewies during first light or late afternoon and into the night. There's been plenty to target while we kicked back with a beer or two.

Keep floatin' - Thrifty's



LET'S GO FISHING!

IT'S TIME TO PATCH UP THE DINGHY, GET OUT YOUR RODS AND HEAD TO THE WATER AND SEE WHAT'S LURKING BELOW THE SURFACE.

And to make your chances of catching a big one all the better we've got a \$50 BCF gift vouchers up for grabs.

FOR YOUR CHANCE TO WIN, SIMPLY SMS: LET'S GO FISHING, YOUR NAME, AND YOUR EMAIL ADDRESS TO 0438 474 290.

LIMIT OF ONE ENTRY PER PERSON. BY SUBMITTING AN ENTRY, YOU CONSENT TO THE USE OF YOUR CONTACT DETAILS FOR PROMOTIONAL AND MARKETING PURPOSES.

ONE STOP SHOP

FOR ALL REPAIRS ON HEAVY EARTHMOVING MACHINERY

MECHANICAL DIVISION

HEAVY PLANT SERVICES

DK

24/7 On Call Service • Onsite & Offsite • Repairs • Breakdowns

(02) 550 421 48

admin@dkheavyplantservices.com

dkheavyplantservices.com

TASTY THAI

WE'RE BACK WITH ANOTHER YEAR OF DELICIOUS FOOD REVIEWS, AND AS OUR FIRST RESTAURANT OF 2021, STICKY RICE THAI IN WICKHAM HAS SET THE STANDARD HIGH.

Following rave reviews from my Dad, I decided to head to Sticky Rice Wichham for a midweek dinner with my partner for the ever so important first Coalface food review of the year. I'm not entirely sure why, and this may sound ridiculous, but I was nervous.

Located across from Newcastle harbour on the main road of Hannell Street, Wichham, the restaurant is in the perfect spot for lunch or dinner and a stroll along the water. We had full intentions of doing just that for our 'thursdays' afternoon.

LIVE MUSIC IS BACK BABY!

THIS THAT NEWCASTLE - NOVEMBER 6, 2021
 Returning for its sixth year, This That is one of the largest annual music festivals to be held in Newcastle and this year is no exception. Although crowd numbers will be understandably reduced, they're still bringing you the biggest and best experience possible. Dime Rats, Chillihit, Maltrat, What so Not and a huge line-up of amazing artists will be taking to the stage for a day and night to remember. Of course, Covid safety is a priority with contact tracing and ticket validation, entry scheduling, temperature checking, social distancing, onsite sanitisation and hygiene to be prevalent on the day.



ambience. The restaurant interior makes you feel comfortable and relaxed featuring high ceilings, tall concrete walls and warm lighting with glass doors and windows letting in natural light throughout the day. It was a beautiful time to grab some dinner as the sun slowly went down and we settled into our meals.

We shared a selection of dishes. From the Entrée menu we ordered the Curry Puffs (served as 4 pieces of deep fried golden pastries filled with chicken, mashed potato, onion, carrot, corn, peas and curry powder filling), and also the Satay Chicken Skids served as 4 grilled chicken tenderloin skewers with satay sauce. The satay sauce on the skewers had nuts mixed into the satay that brought out a lovely crunchy texture and the chicken was tender.

IT WAS HARD TO CHOOSE OUR MAINS SIMPLY BECAUSE EXPERIENCING ON THE MENU SOUNDED DELICIOUS. WE CHOSE TO ORDER THE ROAST BUCK SALAD TOPPED WITH THAI DRESSING, CHILLI LAM, CUCUMBER, TOMATO AND THAI HERBS; THE PAD THAI



WITH THIN RICE NOODLES STIR FRIED IN RICH FLAVOUR TAMARIND SAUCE WITH EGG, BEAN SPROUTS AND GROUND PEANUTS; AND THE SPICY FRIED RICE COOKED WITH CHILLI, EGG, ONION, MIXED VEGETABLES AND BASIL.

The servings of each main were absolutely huge. You could honestly take a small fry into Sticky Rice and order two mains to share and everyone would still walk out full. The Pad Thai was flavoured with duck web beautifully cooked, and the Spicy Fried Rice had the perfect amount of chilli in it without the threat of a burning burn here that night. The presentation of each

dish was also stunning with bright, fresh colours and salads on the side. Even our drinks looked like little works of art.

We ate as much as we could humanly fit in our stomachs, and still walked out of the restaurant with 3 takeaway containers of leftovers. We left stuffed, but very satisfied. Now we did have plans to go on a romantic stroll & fireworks, but our giant guts were weighing us down after the feast we had just endured, and we went for home for a slightly less romantic nap. Overall, this restaurant really kicked off 2021 with a solid start - I'd give it a 4 out of 5 stars.

IF THERE'S ONE THING FOR CERTAIN, 2020 WAS NOT A GREAT YEAR FOR OUR LIVE MUSIC INDUSTRY.

We saw our favourite concerts cancelled or postponed, international artists couldn't enter the country and overall, it was just an absolute bummer. Some events were held virtually, and artists took to social media and streaming



BLUESFEST BYRON BAY - APRIL 1-5, 2021
 With an all-Australian lineup including artists like Jimmy Barnes, John Butler and The Cat Empire, this year's Bluesfest in Byron Bay is going to be a banger. From the moment you arrive on-site, up until when you leave, you'll find event organisers have ensured a safe bluesfest experience. Cleaning products will be used in all areas with a cleaning team regularly going about their work throughout the event, extra security ushers will be onsite, and a local app will keep you updated on safety measures at the time of the festival as well as notifications, so you won't miss any of your favourite artists.

LUNAR ELECTRIC - GOLD COAST - MARCH 13, 2021

It's a big call I know, but this is the most epic line up I have seen on the 2021 festival calendar so far, bringing to you Jimmy Trimper, Will Sparkes, Holligan Hets, Bombs Away, Havana Brown, Joel Fletcher, Party Thieves and so many more over one huge night. I wouldn't mind around getting tickets with a line up like this. The event will have increased security, police and event staff on the night to ensure complete Covid safety and extra signage will be surrounding the venue, so be sure to follow all directives. As you would also expect, attending the event means you give consent to your information being shared with QLD Health for contact tracing. The Lunar Electric Newcastle dates are still to be announced.



services, but let's face it nothing beats live music for both artists and fans. So it's great news that festivals and concerts are making their return in 2021 with enough events to keep you boogying with your mates all year round. With Covid safe measures in place things will be a little different to previous years so while we still encourage you to party hard, remember to party safely! Here's our top live music picks so far for 2021.



THRASHVILLE HUNTER - FEBRUARY 13, 2021

Right here in the Hunter Valley, this is an event that embraces the sharper edge of human existence. Renowned for its punk, hard rock and metal genres, this is a festival for those who like a little more energy with their live music. With 13 hand picked live acts including C.O.F.I.N., Batsenake and Maitland's own local girl band Ragdoll, you're in for a treat. This year, the vibes will be the same as well as the quality of the acts, although due to social distancing laws you won't be able to mosh like you normally would (so no you can't be moshing packed against random sweaty bodles as you rock on). You'll be required to hang with your small household group. Capacity at the event will also be reduced so that everyone can spread out, and everyone will be temperature checked on arrival. As the Thrashville organisers have pointed out, "We don't make the rules, we just abide by them".

TED® and LA-40

Your best mates for plant maintenance.



ROAD TO SAFETY STARTS WITH QUALITY PRODUCT

Best known for our Tracked Elevating Device (TED) we have several other innovative products including the Lift Assist System and new lines in the design process. Our products are made to the highest standards, utilising top quality parts and local suppliers and labour wherever practicable.

Get in touch with us today, our friendly team will be more than happy to assist with any questions you may have.

CALL US FOR MORE INFORMATION TODAY
 +61 418 517 359 or visit www.nivekindustries.com.au



Stay safe and connect with us online
 @nivekindustries



EASY				
4	8			3
6		3	2	4
9		4	8	2
6	7	1	3	
	1	9	7	2
		5	4	8
2		7	1	
	3	4	6	5
	9			8
				5

SUDOKU

@THECOALFACE
PRIZE WINNERS

Volume 4 - No 13 - December 2020

- | | |
|--------------------------------|-----------------|
| Chris Bag | Alf Buckley |
| Roberts Meats Raffie | Chris Horton |
| Banlaw Deal Voucher | Robert Downes |
| Terrace Boating Voucher | Ewan Hanley |
| Newcastle Brew Shop Kit | Vanessa Blyden |
| Innovate Electricals' Tub | Michael Kriesch |
| Ultimate Kids Voucher | Lae Noonan |
| Complete Parts Tractor/Trailer | Brett Blackshaw |

CONGRATULATIONS TO ALL OUR WINNERS!

WINNERS!

DIFFICULT				
5		9		7
	7	1	8	2
		8		4
7				3
	9	5		
6	2		4	
	4		5	1
		4		4
5				8

QUIZ

Were You Paying Attention In 2020?

1. What was the most-played song of 2020?
2. The Covid outbreak is said to have started in a market in which city?
3. Which of the top 20 richest men in the world ran for US President?
4. What digital platform did Donald Trump claim seven times that he was going to run?
5. Where were the Olympics supposed to be held in 2020?
6. The World Health Organisation named 2020 the year of what?
7. Which artist released the song WAP?
8. What was the most watched documentary on Netflix this year?
9. Which notable figure tweeted in support of a conspiracy theory stating that the pyramids in Egypt were built by aliens?
10. In a controversial attempt to lift spirits, Gal Gaido got celebrities to sing which song in a viral video?
11. What movie featured James Corden, Taylor Swift, Dame Judi Dench and Jennifer Hudson?
12. In May, Michael Jordan's autographed Air Nine sneakers from 1985 sold for how much money?
13. Which rapper attempted to run for President as an Independent?

ANSWERS
1. MONDO MONDO
2. WUHAN
3. DONALD TRUMP
4. TIKTOK
5. JAPAN
6. THE PANDEMIC
7. MEGAN THEE STALLION
8. THE SOCIAL DILEMMA
9. THE PYRAMIDS IN EGYPT
10. THE MONTE CARLO SINGERS
11. THE MONTE CARLO SINGERS
12. \$1.2 MILLION
13. JOE BIDEN

Northwest Mining

Mining for the future

Locally owned and operated, Northwest Mining Company is based in Muswellbrook and provide equipment hire, labour solutions, automotive and fabrication services. Offering wet and dry hire options, all equipment comes with 24 hour breakdown support.

FABRICATION SERVICES

- AS1554-5 Standards
- Onsite Workshop Facility
- Quality Assurance Support
- Onsite Boilermaker Services
- All Forms Of Fabrication

EQUIPMENT HIRE

- LED Lighting Towers
- Excavators, Bobcats
- Articulated & Tipper Trucks
- Graders
- Scrapers
- Rollers
- Water Carts

AUTOMOTIVE SERVICES

- Blue Slips & Pink Slips
- MDG-15 Compliant
- Mine Spec Fit Outs
- Air Conditioning Services
- Fleet Servicing & Maintenance
- Heavy Vehicle Services
- Auto Electrical Services

LABOUR HIRE

- Plant Mechanics
- Auto Electricians
- Operators
- Trade Assistants



17-19 Thomas Mitchell Drive
Muswellbrook NSW 2333
Ph: 02 6543 2307
Email: admin@nwminingcompany.com

www.nwminingcompany.com.au

TREK TIME

FOLLOW IN THE FOOTSTEPS OF A GREAT LOST CIVILISATION CHANGING IN ONE OF THE MOST SIGNIFICANT VISITS ON EARTH.



It's my first experience at high altitude and I can feel the lack of oxygen in the air as I walk the streets of Cusco. At an altitude of 3599m, the historic city of Cusco is the perfect place to acclimatise for a couple of days prior to hiking the famous Inca Trail to Machu Picchu, and a perfect excuse to sit in one of the many restaurants surrounding the beautiful Plaza de Armas and sample the famous local delicacy of roasted cuy (guinea pig) with a Pisco sour whilst I wait for my lurches to catch up with me.

A nice day trip from Cusco are the ruins of Ollantaytambo which is home to some of the best preserved Inca ruins in Peru, as well as a bustling market to buy all manner of souvenirs (I recommend a nice alpaca wool chullo beanie to keep you warm at night on the hike).

A few two days in Cusco by utilizing bus and train to join the Inca Trail and stay at the Inca Trail hike. Strict rules state that the Inca Trail can only be undertaken with an official Tour Guide but it is a small price to pay for the privilege of walking an iconic track and there is still a lot of autonomy allowed. Another benefit is that you only need to carry a small daypack whilst your

main backpack (we had a 15kg weight limit) was carried by one of the group's incredible porters.

The first day is an easy warm-up of light hills punctuated by regular Inca ruins and ubiquitous llamas, jutting us into a false sense of security before the 2nd day rest of Dead Woman's Pass which altitude of 4,215 is nearly 1,800m steeper than Machu Picchu itself.

Whilst our group was recovering at the top of the pass our hardy porters bounded past us with our packs on their shoulders and what was even more embarrassing for us was that they were doing all of this wearing old, homemade sandals and a smile on their faces. Another regular sight on the hike was seeing kids as young as 6 walk past us on their way to school, embodying the "when I was your age, I used to walk 5km barefoot down the Inca Trail to school every morning" type stories our grandparents would say.

AFTER THREE DAYS OF RUINS, PICTURESCQUE VIEWS AND LLAMAS WE HAD A PRE-DAWN START ON THE 4TH MORNING TO REACH THE FAMOUS SUN GATE IN TIME TO CATCH THE FIRST

RAYS OF THE SUN HITTING MACHU PICCHU AND WERE DEVASTATED TO SEE IT COVERED IN CLOUD. THANKFULLY THIS IS USUALLY TEMPORARY, AND THE CLOUDS QUICKLY DISPERSED TO REVEAL A ONCE IN A LIFETIME VIEW OF THIS ANCIENT CITY SET IN A BARELY BELIEVABLE MOUNTAIN BACKDROP.

After taking a million photos we walked down into the old city to have it almost to ourselves before the day-trippers from the valley below arrived. I had forgotten how badly I must have smelted until I saw them wrinkling their noses at my 4-day old hiking stench. I've never been a morning person but a key word of advice from the walk is that since there were no showers and only squat toilets for the entire 4 days of the hike, and they were cleaned first thing in the morning, it is best to be there early!

But the dirt and smelt were soon worn off in the thermal baths of the nearby town of Aguas Calientes (hot Waters) followed by enough beers to sooth any remaining aches and pains from what was a truly an unforgettable adventure.

HUNTER VALLEY MINING CHARITY RUGBY LEAGUE KNOCKOUT COMPETITION

20 MARCH 2021

PIRTEK PARK, SINGLETON

THE TRADITIONAL BATTLE OF THE MINES CONTINUES WITH 300 LOCAL COAL MINERS COMPETING FOR BRAGGING RIGHTS AND SUPPORTING THE LIFESAIVING WORK OF THE WESTPAC RESCUE HELICOPTER SERVICE

\$5 PER PERSON - TICKETS AVAILABLE ONLINE ONLY
To purchase visit www.charityrugbyleagueaday.com.au
(Strictly no ticket sales at the gate due to Covid Safety Plan Restrictions)

BBO • BAR • COFFEE VAN • RAFFLE • MERCHANDISE • FREE PARKING
GATES OPEN 7.30AM, FIRST GAME KICKS OFF AT 9.00AM

Supporting the Westpac Rescue Helicopter Service

1800 155 155 | www.charityrugbyleagueaday.com.au

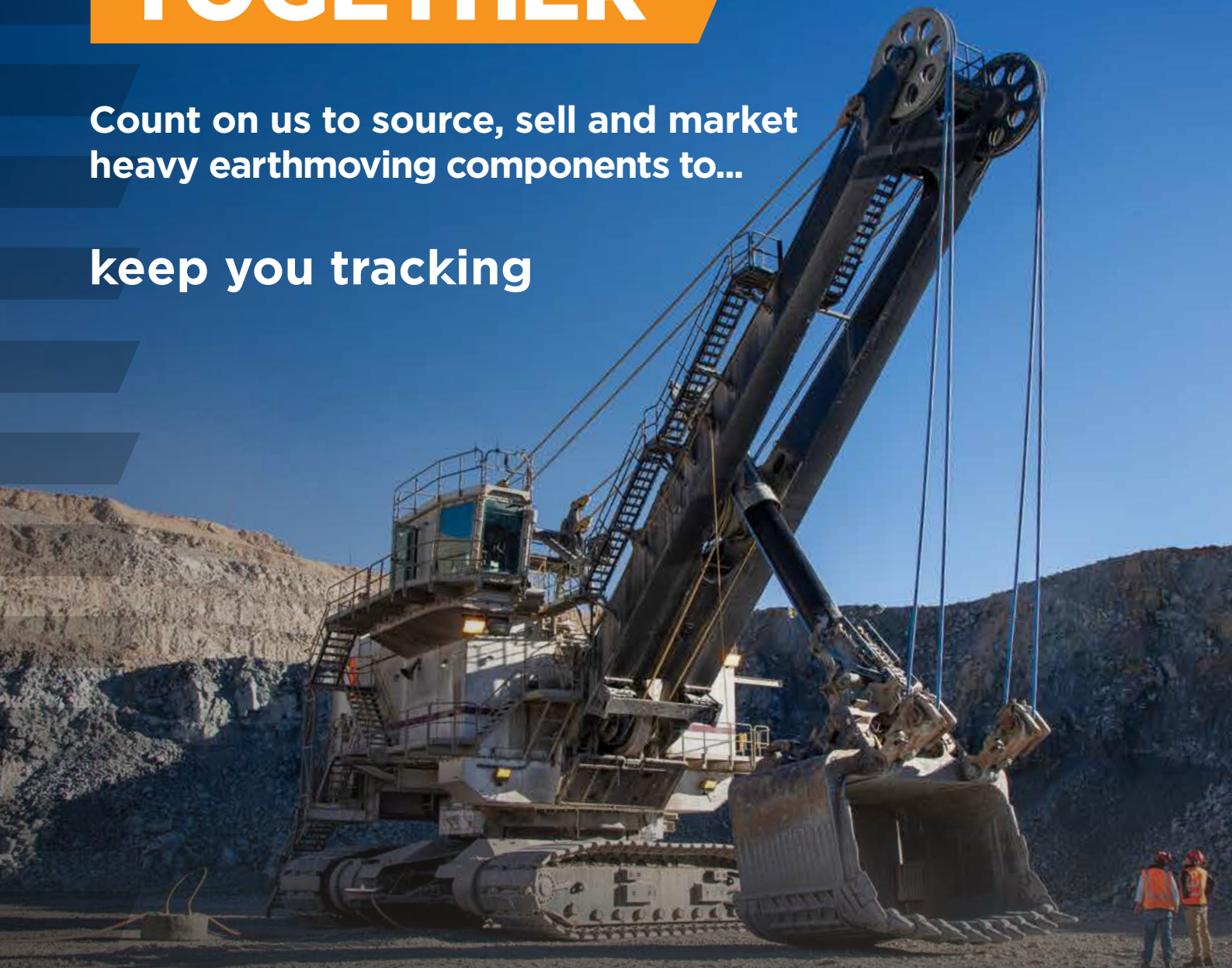
MOVING

FORWARD

TOGETHER

Count on us to source, sell and market heavy earthmoving components to...

keep you tracking



1300 726 801
componentsonly.com

AN **EQUIPZAR** MARKETPLACE

**COMPONENTS
ONLY**

/ source / sell / market