

@THE COAL FACE

Vol 3 No 2: Winter 2021

Available online @ thecoalface.net.au



PETONNA SERVICES BACKS BOGGY NINJA

AT JUST 18 YEARS OLD, BOGGABRI LOCAL CRUZE MORLEY HAS BECOME THE YOUNGEST EVER NINJA TO COMPETE IN THE AUSTRALIAN NINJA WARRIOR.

PAGE 8



We specialise
in solutions

kelaherindustrial.com.au



KELAHHER
INDUSTRIAL SERVICES

OUR SERVICES

We build, modify, maintain and repair fixed and mobile plant and equipment of any size, for any industry.

From our fully equipped fabrication workshop OR we can come to you with our fully-equipped mobile workshop and modern fleet of equipment.



18-20 Martin Road Gunnedah NSW 2380 | T: 0428 438 552 | E: admin@kelaherindustrial.com.au

WELCOMING WINTER

THIS QUARTER WE SAY HELLO TO A CHILLY 2021 WINTER, BUT WELCOME WITH IT MORE EXCITING INDUSTRY NEWS, STORIES ABOUT SOME OF OUR LOCAL NORTHWEST LEGENDS AND BRING YOU A GOOD LAUGH OR TWO ALONG THE WAY.

Over the past 3 months we have seen our warmer weather turn to frosty early mornings before work. We've seen our industry continue to kick goals, our communities unite in the face adversity, and we can only hope the cold will help see the end of those dreaded mice.

ONE THING'S FOR CERTAIN NO MATTER WHAT INDUSTRY YOU'RE A PART OF - WE'RE IN THIS TOGETHER.

So, this quarter we want to bring you the lighthearted and heartwarming stories that make our community and industry so great. Like the Boggy Ninja!

Boggabri's Cruze Morley, now best known as the Boggy Ninja, has taken on Australian Ninja Warriors killer new 2021 course. We chat to Cruze about how he got there.

We also celebrate Whitehaven Coal's Rocglen sites massive safety achievement of 3000 days Lost Time to Injury free. It's a testament to everyone who has worked at Rocglen over the years.

You'll have to check out our chat with local Narrabri business Continental Eagle. These legends have been a key part of Narrabri for quite some time now, and they're always willing to provide a helping hand to their clients, customer's and community.

We hope you enjoy this Winter read and please reach out if you have any news or ideas. We love hearing from you – ashley@thecoalface.net.au.

OPINION

COAL CAREERS

CONGRATULATIONS TO THE NSW NATIONALS' CANDIDATE DAVID LAYZELL ON WINNING THE RECENT UPPER HUNTER BY-ELECTION, AND TO ALL THE CANDIDATES THAT ENTERED THE CONTEST. POLITICS IS A TOUGH BUSINESS AND THOSE WILLING TO PUT THEMSELVES FORWARD TO REPRESENT THEIR LOCAL COMMUNITY DESERVE OUR GRATITUDE.

While there was a strong focus on mining during the byelection we've also been busy promoting mining industry careers across the state through a series of regional Careers Dinners for high school students, parents, teachers and careers advisers.

Our first Careers Dinner was recently held in Wollongong, providing a great opportunity to showcase the diverse career opportunities within the NSW mining sector. Since then we've also held a similar event in Orange, with further dinners planned for the Gunnedah and Hunter regions.

Once completed, these important events will have helped inform hundreds of people about some of the great career potential

opportunities our industry has to offer. We've had some terrific feedback from the first two dinners and look forward to continuing this important initiative.

Tens of thousands of people make up our world-class mining workforce in NSW, working in a wide range of diverse roles. Our industry is innovative, energetic, and constantly adapting to change, with a bright future ahead. That's why attracting the next generation into our ranks is so important.

For more information on our upcoming Careers Dinners, check out www.nswmining.com.au/careersdinner

Stephen Galilee, CEO, NSW Minerals Council

@THE COALFACE

Publisher	Shane Davey shane@thecoalface.net.au 0408 759 088
Editor	Ashley Grogan ashley@thecoalface.net.au 0402 348 341
Journalist	Rebecca Connolly rebecca@thecoalface.net.au 0408 769 699
Client Manager	Melessa Ernst melessa@thecoalface.net.au 0429 823 635
Design	CarrollMel Design

Shop 10, 157-159 John Street, Singleton NSW 2330
www.thecoalface.net.au

Developed by miners, for miners

If you work in mining and feel that your mental health is under strain because of stress, help is now at hand – or in your pocket!

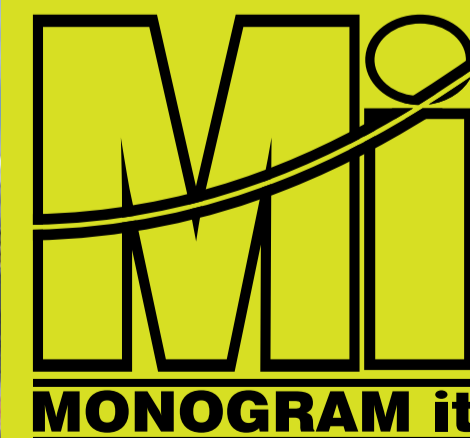


Minewell

Available now for download



MineWell is a preventative mental health and wellbeing app developed by the Minerals Council of Australia to provide prevention, intervention and education in mental health and wellbeing for Australian mining workers and their families.



- BOOTS
- WORKWEAR
- SAFETY
- UNIFORMS

info@monogramit.com.au
www.monogramit.com.au

02 6762 4022

**192 Bridge Street
Tamworth NSW 2340**

OPINION

OUR TOP-CLASS MET COAL SOUGHT AROUND THE WORLD



YOU CAN'T MAKE STEEL WITHOUT METALLURGICAL (MET) COAL, AND AUSTRALIA'S MET COAL - INCLUDING THAT PRODUCED IN THE HUNTER AND THE NORTH-WEST - IS AMONGST THE BEST IN THE WORLD.

With more than 96 per cent of Australia's met coal production exported, this high quality attracts customers from around the world from Asian countries such as India, China, Japan, South Korea and Taiwan all the way to the EU. Our world-leading met coal miners provide jobs for thousands of Australians in regional areas and contribute significantly to the local and national economy. And the Hunter Valley and Gunnedah basins are well placed to continue producing met coal for years to come to support global growth and infrastructure development. The good news is that a new report from the MCA shows that Australia will continue to be a strong supplier of met coal over the next couple of decades thanks to its high quality. **AUSTRALIAN METALLURGICAL COAL: QUALITY SOUGHT AROUND THE WORLD - THE SECOND IN THE MCA'S BEST IN CLASS: AUSTRALIA'S BULK COMMODITY GIANTS SERIES - IS AN**

IN-DEPTH EXPLORATION OF HOW AND WHY AUSTRALIA IS THE LARGEST SEABORNE EXPORTER OF STEEL-MAKING COAL. Using high-quality Australian met coal also reduces emissions while boosting productivity for blast furnace operators. Many of the met coals produced in Australia are integral to global steel production because of their specific properties which optimise blast furnace performance. And many MCA member companies are already taking action to further reduce emissions from the use of met coal. For example, BHP signed a memorandum of understanding with world leading steel producer China Baowu in November 2020 with the intention to invest up to US\$35 million and share technical knowledge to help address the challenge of reducing greenhouse gas emissions facing the global steel industry.

In 2019, Australia exported 184 million tonnes (worth \$41.3 billion) of metallurgical coal, while North America (50 million tonnes), Russia (39 million tonnes) and Canada (35 million tonnes) exported significantly smaller volumes. Faster introduction of existing low emissions technologies and greater research and development of new and emerging technologies will be required to ensure the world is able to achieve the emissions reduction goals of the Paris Agreement. Written by industry expert Anthony Le Bas, the report indicates the Indian market for steel-making coal is expected to substantially grow as steel production in the South Asia nation grows over the next twenty years. This is great news for communities and jobs and a strong future for the Hunter and North-West. **Tania Constable**
CEO, Minerals Council of Australia

MASSIVE SAFETY MILESTONE

MORE THAN EIGHT YEARS, OR 3000 DAYS, IS HOW LONG THE TEAM AT WHITEHAVEN COAL'S ROCGLLEN SITE HAS WORKED WITHOUT ANY LOST TIME TO INJURY (LTI), A WORKPLACE INJURY THAT LEADS TO TIME OFF WORK.



Rocglen is an open-cut coal mine now in rehabilitation, located about 28km north of Gunnedah. 3000 days LTI-free is a significant safety milestone, particularly as the site has transitioned from operations to closure and rehabilitation over the period. Coal mining started in 2008 and concluded in mid-2019. Since late 2019, teams on site have been focused on decommissioning equipment, demolishing structures and removing materials as part of the transition to rehabilitation. Rehabilitation works are scheduled to be complete within the next 24 months, with the following years to include monitoring and maintenance of the area. **"WHAT MANY PEOPLE DON'T REALISE IS THAT REHABILITATION WORK INVOLVES MANY OF THE SAME RISKS AS A COAL-PRODUCING MINE SITE, AND SOME NEW ONES," SAYS DARYL ROBINSON, WHITEHAVEN COAL'S CLOSED MINES AND REHABILITATION MANAGER.** "For example, we are still using the same machinery, albeit at reduced numbers. "There are still a lot of truck movements and machinery interactions as we continue

to haul overburden and create the final landform, but in this case trucks are hauling dirt downhill rather than uphill, which introduces different risks for drivers. "We've had to work hard to maintain safety awareness and focus on site as we've moved from a coal producing site to a rehabilitation operation." The unique nature of some of the work, such as demolition of structures, requires specialised contractors - and while they are subject to Whitehaven's strict safety processes and systems, having new people interacting with site personnel introduces new risks. What's more, the fact that workforce requirements on site are winding down poses its own challenges. "When any mine site ceases operations, you naturally have some people looking for longer-term job security and moving on to the next job, which means you lose some experience," adds Daryl. "At the same time, we have some team members who dug the coal out and have stayed on because they now want to see the job finished.

"Either way when working on closure and rehabilitation, a key challenge is maintaining a skilled workforce with the safety focus, motivation and enthusiasm for the final goal. **"THE FACT THAT WE'VE BEEN ABLE TO MANAGE THESE NEW CHALLENGES AND MAINTAIN A SAFETY FOCUS IS A TESTAMENT TO EVERYONE WHO HAS WORKED AT ROCGLLEN OVER THE YEARS - AND WE'LL CONTINUE TO STRIVE FOR ZERO HARM AS REHABILITATION PROGRESSES."** The former mine will be returned to woodland vegetation that blends into the surrounding Vickery State Forest, as well as some pasture for grazing. Site relinquishment can take place when rehabilitation is deemed to achieve approval conditions by the NSW Government. This is expected to take at least ten to fifteen years until post rehabilitation monitoring demonstrates the site is safe and stable with established self-sustaining ecosystems that integrate with its surrounds. Find out more about Rocglen at www.whitehavencoal.com.au/rocglen-mine

A 35 Allgayer Drive,
Gunnedah NSW 2380
P (02) 6741 4777
E ghsales@expressway.com.au
W www.expressway.com.au

Expressway Spares PTY. LTD.



SUPPLYING PARTS AND EQUIPMENT SUITABLE FOR CATERPILLAR AND HITACHI SINCE 1964

SUPPLIERS OF NEW, USED AND RECONDITIONED PARTS & COMPONENTS

WAUCHOPE 02 6585 1000	HUNTER VALLEY 02 6574 6499	MACKAY 07 4955 0220	PERTH 08 9477 1355
--------------------------	-------------------------------	------------------------	-----------------------

"I've been a fitter for fourteen years, did my trade in the Valley and the got the opportunity to come up here and extend my skills. I'm currently building a house and have the best future ahead of me at the moment. I can't see myself looking back!"

JOSHUA HARE, FIELD SERVICE FITTER, GUNNEDAH



Discover great stories about life in Gunnedah and all the opportunities at:
www.live.gunnedah.nsw.gov.au





CALLING ALL eIMEx EXHIBITORS

The Energy, Innovation and Mining Expo (eIMEx) first made headlines during its inaugural event in 2018, injecting fresh opportunities and innovation through an event that reflected the balance and relationship between regional Australian industries. The first event paved the way for eIMEx to become a biannual industry celebration, however Covid put the 2020 expo on hold until 2021.

We can finally start to get excited for the postponed event to be held in October this year, at the Gunnedah Showground and it's set to be bigger, better and even more finely tuned to the needs and interests of Australia's growing and changing energy, innovation and mining industries.

MORE THAN 2500 PEOPLE VISITED THE 2018 EVENTS, AND WITH THE HARD WORK OF EIMEX VOLUNTEERS AND THE GUNNEDAH SHOW SOCIETY, THIS YEAR WE HOPE TO SEE A HUGE CROWD VISIT AND LEARN ABOUT 2021'S PARTICIPATING EXHIBITORS.

'AVE A LAUGH WITH COMPONENTS ONLY

WWW.COMPONENTSONLY.COM
1300 726 801

How do you console an English Teacher?
There, their, they're

This year's expo is focussed on showcasing innovative products and technology influencing the energy, agricultural and resource industries.

Committee Chairman and Deputy Mayor, Gunnedah Shire Council, Rob Hooke, said he was thrilled to see the event going ahead this year after it's 2020 hiatus, with brilliant guest speakers set to attend.

"For eIMEx 2021 we are very fortunate to have Professor Veena Sahajwalla from the University of NSW (UNSW) SMaRT Centre as our guest for the entire expo," he said.

"You will have the opportunity to hear about the groundbreaking work being undertaken at UNSW as well as the chance to interact and engage with Professor Veena throughout the 2 days.

"Professor Veena has appeared on Australian Story 'tipping point' discussing how she has developed a process to make green alloys, using end-of-life rubber tyres and waste plastic as an alternative to coking coal."

STILL IN ITS EARLY STAGES, THE EIMEX COMMITTEE ARE NOW CALLING FOR EXHIBITORS AND WARM SPACES ARE FILLING QUICKLY. "EIMEX CAN PROVIDE YOUR BUSINESS OR ORGANISATION WITH THE OPPORTUNITY TO SHOWCASE YOUR PRODUCT OR SERVICE TO POTENTIAL CLIENTS FROM A WIDE VARIETY OF INDUSTRIES," SAID ROB.

Over the course of the 2 days there will also be the following networking events, giving you the chance to participate and interact with guest speakers, industry experts, innovative technology and potential customers:

- **Thursday 7th October**, exhibitors and interested parties are invited to attend a workshop conducted by Ross Carter,



THE ENERGY, INNOVATION AND MINING EXPO IS RETURNING TO GUNNEDAH ON OCTOBER 8 & 9, 2021 WITH THIS YEAR'S PROGRAM SET TO SHOWCASE THE BEST EIMEX EXHIBITORS HAVE TO OFFER.

Facilitator with the Federal Government's Entrepreneurs Programme 'Winning Project work despite the Tender Process'.

- **Thursday 7th October**, exhibitors and sponsors are welcome to join Professor Veena and the committee for drinks and canapes for a relaxed meet and greet at the Gunnedah Showground.
- **Friday 8th October**, The Women in the Workforce Breakfast at the Gunnedah Showground.
- **Friday 8th October**, eIMEx dinner at the Gunnedah Town Hall.

Throughout the course of the two days eIMEx provides exhibitors the chance to be interviewed by their on-site radio broadcaster, sending your message to other exhibitors and patrons of eIMEx and the listening area as well. There is also the opportunity for you to present and hear about products and services through a range of talks scheduled throughout the 2 day expo.

Sponsorship programs and opportunities are also available for exhibitors and industry partners. The best way to keep up to date is through their social media campaign which will be run throughout the build up to eIMEx featuring exhibitors, sponsors and guest speakers so keep your eye out for updates and information. Don't forget to give them a follow.

Exhibitors can get involved by emailing the Administration Officer directly at admin@eimexgunnedah.net.au or head to the website to register your interest.

It's an event not to be missed, and you'll sure to see @ The Coalface around over the course of the event. See you all there!

RUTHERFORD

44 Mustang Drive
Rutherford NSW 2320
02 4932 5222

MUSWELLBROOK

10 Carramere Road
Muswellbrook NSW 2333
02 6526 2822

GUNNEDAH

NOW OPEN

249-251 Conadilly Street
Gunnedah NSW 2380
02 6780 9700

OUR TURN TO HELP

THE WESTPAC RESCUE HELICOPTER SERVICE HAS LAUNCHED ITS ANNUAL END OF FINANCIAL YEAR APPEAL AND WE URGE YOU TO DO YOUR PART TO KEEP THIS VITAL SERVICE IN THE AIR.

Every year the Service helps countless people across Northern NSW. No-one understands this more than NSW Health Doctor Rob Bartolacci. Dr Rob is a member of the onboard Helicopter Critical Care Medical Team and every time they head out on another call, he experiences firsthand the vital role the Service plays in saving lives.

"It's hard to imagine a person that hasn't been touched directly or indirectly by the Westpac Rescue Helicopter," Dr Rob said.

"The outcome for our patients is our primary goal. We take their best chances of survival to them, and without this their outcomes would be significantly different."

"WE HAVE THE WORLD'S MOST TECHNICALLY ADVANCED AEROMEDICAL AIRCRAFT, THAT'S BASICALLY A MOBILE INTENSIVE CARE UNIT. WE CAN GIVE AN ANAESTHETIC, PROVIDE PAIN RELIEF OR A LIFESAVING BLOOD TRANSFUSION. WE CAN SUPPORT SOMEONE'S BREATHING, SUPPORT THEIR HEART...WE CAN EVEN RE-START THEIR HEART. ALL THIS HAPPENS IN MAJOR HOSPITALS EVERY DAY. THE DIFFERENCE IS, WE DO IT IN THE AIR," DR ROB CONCLUDED.

In the first 4 months of 2021 the Service's three bases at Newcastle, Tamworth and Lismore have flown over 500 missions and on average, the Westpac Rescue Helicopter flies over 1500



THE COMMUNITY CAN MAKE DONATIONS TO THE SERVICE'S APPEAL AT [RESCUEHELICOPTER.COM.AU/APPEAL](https://rescuehelicopter.com.au/appeal) OR BY FREECALL 1800 155 155.



LAUNCHING LOCAL MINING CAREERS

GUNNEDAH LOCAL LACHLAN COCHRANE IS A FEW WEEKS INTO HIS NEW CAREER IN MINING, AS PART OF THE FIRST FEW TRAINEE OPERATORS JOINING WHITEHAVEN'S MAULES CREEK COAL MINE THROUGH A NEW PROGRAM TO ENCOURAGE LOCALS INTO THE INDUSTRY.

Whitehaven and Programmed have together developed a program that offers trainees the chance to work on-site, learning to operate dump trucks, and results in a nationally recognised Certificate III in Surface Extraction Operations at the end of the two-year program.

After high school, Lachlan

(23) knew he wanted to learn a trade so completed a plastering apprenticeship. But after working as a full-time plasterer, he was soon ready for a new challenge.

"I've always had a love for mining and seeing as how my brother is in the mining business, it kind of made sense as the next

step for me," said Lachlan.

"STAYING LOCAL WAS IMPORTANT TO ME AND THAT'S WHY THE MAULES CREEK MINE IS SUCH A GOOD FIT."

"The program itself gives you a great insight into the process of mining before experiencing it straight away. Getting the certificate is also a big

missions a year, including responding to emergency Triple Zero (000) calls, inter hospital transfers and search and rescue. Every day the Service is proud to deliver the very best in aeromedical support for those in need 24-7.

Westpac Rescue Helicopter Service CEO Richard Jones OAM said they hoped by sharing Dr Rob's insight into the lifesaving capabilities of the aircraft and its Medical Team it would show the broader community how the Service is there for everyone who needs it.

"We are there to serve the community, but now we are seeking the support of the community to once again to help us to raise the vital funds needed to keep the Service flying across Northern NSW," said Jones.

"Each year the community is so generous in support and I hope that thanks to Dr Rob they can see where this support goes and the potential every donation, large or small, has to change people's lives. This truly is a community run service and every year we see that a little from many goes a long way and we are ever so grateful for the continued support."

"We are mindful however that across Northern NSW, having endured COVID, drought, bushfires and most recently the flooding on the Mid North Coast, donation support may be difficult for many. We are all in this together and we hope our Appeal reaches out to everyone, with those who are able, taking the opportunity to make their support count. We are very conscious that not everyone is in a position to donate but we will be very grateful to those that can," Jones concluded.

motivator, because that means I'll be able to complete more training to develop a broader skillset and have the opportunity to operate multiple types of heavy machinery.

"It really just is a great opportunity for everyone out there wanting to try something different, but not quite knowing where to begin."

In April, the first four trainees were welcomed on site, and four new starters will be inducted every fortnight. Whitehaven and Programmed plan to expand the program to the company's other open-cut mines in the region, while also looking to create more traineeships across other parts of the business.

"OUR WORKFORCE DEVELOPMENT PROGRAM GIVES PEOPLE THE OPPORTUNITY TO GROW AND PROGRESS IN THE COMPANY, WHILE ALSO OBTAINING A FORMAL QUALIFICATION. WE SUPPORT, COACH AND MENTOR OUR TRAINEES FROM THE OUTSET, PROVIDING A QUALITY ON-THE-JOB TRAINING EXPERIENCE," ADDED DAVID HELE, EXECUTIVE GENERAL MANAGER PROGRAMMED SKILLED WORKFORCE.

"Our people are a big part of the thriving North West NSW community, and we're pleased to work with Programmed to find new ways to help encourage local people into long-term, rewarding careers," said Daniel Cram, Whitehaven Executive General Manager – People & Culture. Find out more about these career opportunities and register your interest at training.programmed.com.au/whitehaven or call 13 STAFF (13 78233).

SUPPLY SPECIALISTS

to the Mining, Fabrication, Engineering, Construction, Building, Civil, Farming and Rural Sectors

Not just nuts and bolts... it's the shop that's got the lot.

www.valleyfasteners.com.au

RUTHERFORD
44 Mustang Drive
Rutherford NSW 2320
02 4932 5222

MUSWELLBROOK
10 Carramere Road
Muswellbrook NSW 2333
02 6526 2822

GUNNEDAH **NOW OPEN**

249-251 Conadilly Street
Gunnedah NSW 2380
02 6780 9700

PETONNA SERVICES BACKS BOGGY NINJA

AT JUST 18 YEARS OLD, BOGGABRI LOCAL CRUZE MORLEY HAS BECOME THE YOUNGEST EVER NINJA TO COMPETE IN THE AUSTRALIAN NINJA WARRIOR AND IS SET TO BE ON YOUR TV SCREENS VERY SOON.

Cruze Morley has lived in our beautiful little NSW town of Boggabri for 12 years now, currently working in the kitchen at The Commercial Hotel and studying a Certificate 3 in Education Support. But when he's not at work or studying Cruze, now better known as 'The Boggy Ninja', is training in his purpose built Ninja Gym at Petonna

WIN! HANDYMAN'S HEAVEN

Check out the latest tools, pick up those bits and pieces for your latest DIY project, or just grab a coffee after dumping the kids in the play area.

FOR YOUR CHANCE TO WIN A \$50 VOUCHER, SIMPLY SMS: TOOL TIME, YOUR NAME AND YOUR EMAIL ADDRESS TO 0438 474 290.



Limit of one entry per person. By submitting an entry, you consent to the use of your contact details for promotional and marketing purposes.

COME AND JOIN OUR TEAM

GET IN TOUCH TODAY

EMAIL DI.STACEY@MANNIONDRILLING.COM.AU OR PHONE 02 6742 7021



Services, and competing in the 2021 Australian Ninja Warrior coming soon to Channel 9.

"I've been wanting to do Ninja Warrior since I was 14 but I had to be 18 years old to compete," said Boggabri's newest star.

Cruze had even come up with the name The Boggy Ninja the moment he realised he wanted to be on the show. Now just 4 years later, The Boggy Ninja is a household name.

"I was doing lots of swimming, running and travelling to ninja gyms where I trained with some of the bests ninjas, and then I thought why not build my own?"

THAT'S WHEN PETE BRIEN, OWNER OF PETONNA SERVICES STEPPED IN. PETE PUT HIS HAND UP TO SPONSOR THE BOGGY NINJA, THE SCAFFOLDING, AND GIVE HIS TIME AND SHED TO BUILD A PURPOSE BUILT NINJA GYM IN THE HEART OF BOGGABRI. "I'VE BEEN TRAINING AT THE GYM PETE HAS HELPED BUILD FOR 3 YEARS NOW," SAID CRUZE.

"I wanted to be selected for the Australian Ninja Warrior to show people it doesn't matter who you are or where you are from, you can achieve anything if you work for it.

"It's means so much to me to have the support of Pete and Petonna Services, as I wouldn't have come close to making it onto the show without all they provided and the best built scaffolding for me to play on."

As the youngest ever ninja to have competed on the show, Cruze said he felt the pressure, especially being in the same heat as last

year's winner Ben Polson. "I've had a lot of competition, but with my training and mindset I was good to go," he said.

THE AUSTRALIAN NINJA WARRIOR 2021 IS YET TO GO TO AIR ON CHANNEL 9, SO CRUZE WASN'T ABLE TO SHARE TOO MUCH BUT GAVE @ THE COALFACE A LITTLE BIT OF INSIGHT INTO HIS EXPERIENCE. "IT WAS THE BEST THING I HAVE EVER DONE, THE CAMERAS, THE CROWDS, IT WAS AWESOME."

As we wait for the show to hit our screens to cheer on The Boggy Ninja, Pete and Cruze are soon opening their ninja gym to the public so that local kids can get active and have fun. They hope it might even inspire a future ninja or two.

"I hope to one day travel around to schools with my gym and inspire kids to get active, and if anyone wants to help out in any way it all counts," Cruze said.

With the drive and passion Cruze Morley has, I'm sure we will see many inspired little ninja's pushing through the ranks very soon.

Keep your eyes peeled for the Australian Ninja Warrior 2021 on Channel 9 – coming soon.

Go The Boggy Ninja!



REHABILITATION MILESTONE

LOCALS AROUND A HISTORICAL MINING SITE ARE BENEFITING FROM IMPROVED LOCAL AMBIENCE AND LAND AMENITY, AS WHITEHAVEN REACHES A MILESTONE IN THE REHABILITATION OF THE FORMER MELVILLE OPEN CUT AREA.

As part of a plan to rehabilitate the area compatible with the surrounding landscape and landuse, the original Melville underground entry and north open-cut void are now filled and covered with vegetation.

Covering about 34.4 hectares, the Melville site sits within the original Black Jack Colliery, an open-cut and underground coal mine about 7km south of Gunnedah that began operation in the 1890s. Typically coal from this area was used to power local rail, and production declined with the conversion from steam to diesel locomotion.

Mining ceased at the Melville area in 1989, by which time the mining lease had been held by multiple companies. Formal mine closure from the then Department of Mines was never granted. In 2005 Whitehaven acquired the mining lease for the area as part of the purchase of Namoi Mining, and took on responsibility for rehabilitation of the disused site.

The Melville site includes a former underground mine entry and a legacy open-cut void that had been backfilled with coal discarded from the nearby Gunnedah Colliery coal processing plant and Whitehaven's nearby Gunnedah Coal Handling and Processing Plant.

Importantly, the site is at the base of the prominent Black Jack Hill and is highly visible from nearby roads and residences.

THE FIRST PART OF THE REHABILITATION PROCESS INVOLVED DEVELOPING A MINE CLOSURE PLAN, ALSO KNOWN AS THE REHABILITATION PLAN, WHICH IS REVIEWED AND APPROVED BY THE NSW RESOURCES REGULATOR.

To develop the plan, Whitehaven worked with neighbouring landholders to ensure the area would have a final landform and land use suitable to the local context, which in this case is grazing land integrated with the surrounding farm land and Black Jack Hill.

The rehabilitation plan also outlines how Whitehaven plans to meet the detailed closure criteria required by the NSW Government, including through activities such as removing infrastructure, testing for contaminated materials, as well as filling the void and shaping the land.

Specialised software was used to develop a final landform design that is safe, stable and blends into the surrounding land. Innovative drainage design was required to

manage clean water runoff from Black Jack Hill so it returned to the natural catchment. This was done by extending the natural drainage from Black Jack Hill through the Melville rehabilitated void using rock drains integrated into the final landform.

The area was reshaped then capped with about one metre of soil and rock. It was then covered with a 0.2m layer of topsoil fertilised with locally-sourced composted manure, and seeded to a native grass community. A cover crop of oats was also used to provide initial soil stability and allow the native grasses time to become established.

"We've been working closely with local contractors and landholders to complete this rehabilitation project and ensure the final landform and land use meets the expectations of our community and achieves both regulatory and stakeholder requirements," said Daryl Robinson, Whitehaven's Closed Mines and Rehabilitation Manager.

Steve Campbell leases land near the Melville site and says it has been terrific to see the rehabilitation take place.

"The shape of the site is now virtually the same as before mining took place, and in time there will be trees on the site as well. The comments of people that traverse the Wandobah Rd asking what was happening has been extensive. From the time the oats were sown and the hill became a sea of green, right through till the oats hayed off, people have been asking what's been happening at the site – and it has been a pleasure to be able to tell them what a fantastic job has been done," said Mr Campbell.

"MINING HAS OCCURRED IN THIS AREA FOR MORE THAN A HUNDRED YEARS, AND OVER THAT TIME REGULATIONS AROUND MINE CLOSURE AND REHABILITATION HAVE BECOME SIGNIFICANTLY STRICTER, TO THE BENEFIT OF THE ENVIRONMENT AND COMMUNITY. WE'RE PLEASED TO BE ABLE TO USE MODERN TECHNOLOGY TO HELP MAKE THIS HISTORICAL MINE SITE FUNCTIONAL AGAIN FOR ANOTHER LAND USE," ADDED MR ROBINSON.

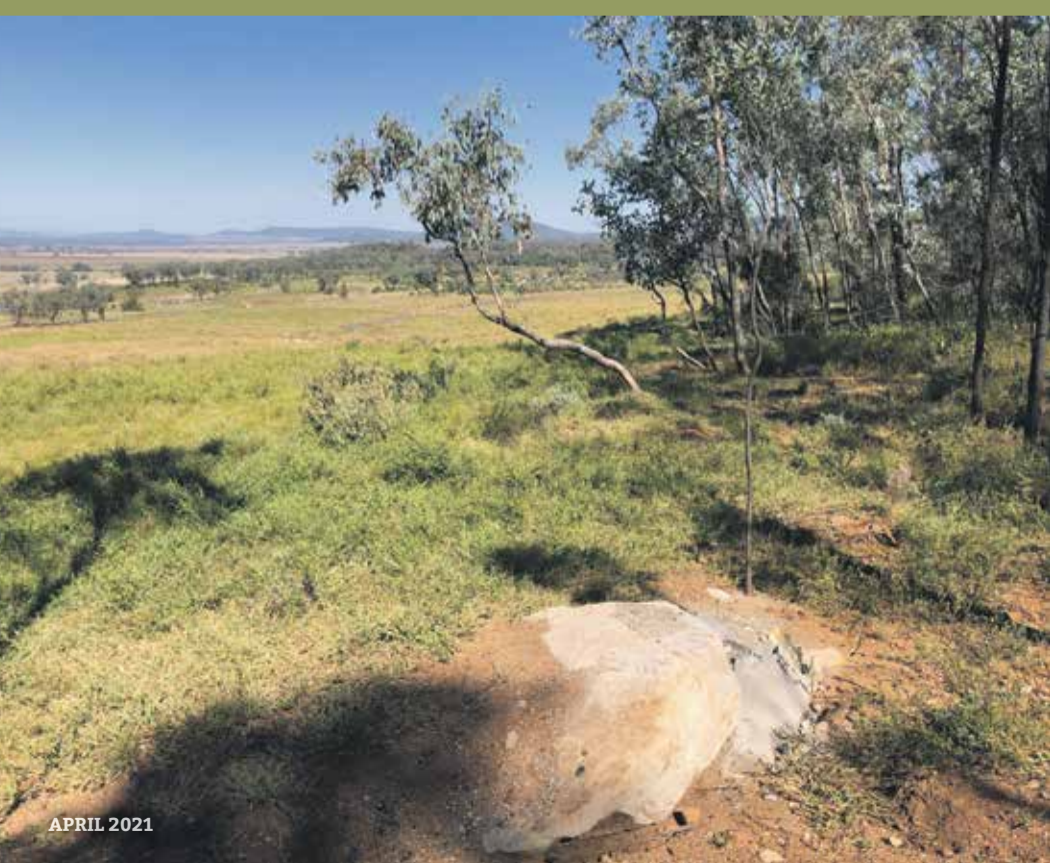
Whitehaven's team is currently monitoring and maintaining the area as the grassland develops. It is expected to take two to three years before grazing can recommence and 5 to 10 years to achieve final mine closure.



MAY 2019



APRIL 2020



APRIL 2021

OPINION

LET’S KEEP FIGHTING FOR THE 12% SUPER WE DESERVE

AUSTRALIA’S COMPULSORY SUPERANNUATION SYSTEM IS SOMETHING ALL WORKING PEOPLE SHOULD BE PROUD OF.



Up until the election of the Hawke-Keating Government in the 1980s many Australians were lucky to have any form of super. Most worked all their lives and then had to make do with a pension. But the 1983 Prices and Incomes Accord saw the new Labor Government sitting down with business and unions to work out how to revitalise the economy. Workers’ representatives agreed to give up a national three per cent pay increase to put towards a new superannuation system for everyone, matched by employers’ contributions. The system has thrived since then. And again it is workers who have led the charge though their industry super funds, like our own Mine Super. But the conservatives have never liked compulsory superannuation - and they certainly haven’t enjoyed seeing workers’ representatives managing workers’ money better and more responsibly than bankers. **INDUSTRY FUNDS, MANAGED BY UNIONS AND EMPLOYERS TOGETHER, CONSISTENTLY**

OUTPERFORM RETAIL FUNDS BECAUSE THEY ARE FULLY COMMITTED TO THE BEST INTERESTS OF WORKING PEOPLE. At our union’s recent National Convention we honoured Peter Muldoon, who has recently retired from Mine Super after 39 years. Peter is a great friend of coal miners who has dedicated his career to helping working families achieve financial security. Over the course of his career, Peter delivered countless pit top talks to coal miners on financial matters. He attended picket lines to advise striking miners. He assisted bereaved widows and supported members with home visits if they needed help with insurance applications or accessing their superannuation. The idea of working class Australians being actively engaged in their wealth management through industry funds and people like our friend Peter Muldoon is anathema to the whole conservative way of thinking. So it has been little surprise to

see the Liberal Party forces who opposed compulsory super back at it again, agitating to block the currently legislated Superannuation Guarantee rate of 9.5 per cent rising incrementally to 12 per cent a year. Their main argument was that many Australians would be better off if they received higher wages rather than an increase in the rate of compulsory superannuation contributions. **BUT CAN YOU SPOT THE BIG FLAW IN THAT ARGUMENT? THERE HAVE BEEN NO HIGHER WAGES.** The super guarantee hasn’t gone up since 2014, when Tony Abbott froze the scheduled increases. Since that time Australian wages have been rising at a snail’s pace. If the conservatives’ theory was right, we should have seen booming wage growth unhindered by super increases. We’ve seen the opposite. Increasing the super guarantee is actually one way of forcing employers to increase pay. Not every Australian has a financial advisor or a swag of investment

properties. Super is often their only chance to invest intelligently and capture that capital growth that has been traditionally confined to the wealthy. The good news for now is that in the wake of all his recent dramas, Scott Morrison seems to be backing off on the super freeze he had been inching toward. That’s obviously a good thing. But given he leads a party itching at the chance to hobble the superannuation sector, you’d be foolish to take your eye off him. Working people must stay on guard to make sure everyone in government understands that blocking our super rises won’t stand. Twelve percent has been identified as an appropriate amount to give workers a dignified retirement and we’ll keep fighting for it. After all, federal politicians like Scott Morrison get 15.4% super - who do you think deserves it more? **Peter Jordan, CFMEU Northern Mining and NSW Energy District President**

CHARGE ON

BHP, RIO TINTO, AND VALE HAVE LAUNCHED THE CHARGE ON INNOVATION CHALLENGE, A GLOBAL COMPETITION FOR TECHNOLOGY INNOVATORS TO DEVELOP NEW CONCEPTS FOR LARGE-SCALE HAUL TRUCK ELECTRIFICATION SYSTEMS TO HELP SIGNIFICANTLY CUT EMISSIONS FROM SURFACE MINE OPERATIONS AND UNLOCK SAFETY, PRODUCTIVITY, AND OPERATIONAL IMPROVEMENTS.

BHP, Rio Tinto, and Vale are the Founding Patrons of the Challenge, in partnership with Australia’s Mining Equipment, Technology and Services (METS) industry body Austmine. The Challenge is expected to attract additional interest from resource companies that maintain substantial haul truck fleets and are looking for innovative concepts to deliver electricity to large battery-electric haul trucks. Current stationary charging systems require substantial time to charge large trucks, which would result in significant lost productivity. The mining industry needs multi-megawatt scale fast charging concepts capable of delivering around 400kWh to charge (and propel) a truck within the truck’s haul cycle (load, travel, dump, return, queue). **“METS AND MINING COMPANIES ARE UNITED ON THE CHALLENGE TO REDUCE EMISSIONS ACROSS THE**

SUPPLY CHAIN,” SAID AUSTMINE CEO CHRISTINE GIBBS STEWART. “With 80% of METS companies supplying products and services outside mining, the Challenge leverages the experience and innovation of industries in the automotive, battery makers, aerospace, defence and other sectors.” “We are confident that we will find a solution to the delivery of electricity to trucks in the complex operating environment of a large surface mine. We expect the Challenge will attract companies from a broad range of sectors including mining, automotive, aerospace, agriculture, and defence to deliver selected charging concepts to create a standard product that can interface with all trucks,” Ms Gibbs Stewart said. The mining industry needs to be at the forefront of tackling the climate challenge. The Charge On Innovation



Challenge is a great example of the current collaborative work being done by the mining industry and mobile equipment manufacturers to decarbonise mining fleets. In addition to providing a zero-carbon energy source, the conversion of mobile mining equipment to battery electric can potentially unlock value, as electric motors have fewer moving parts when compared to standard equipment. Several non-traditional mining sector vendors are actively developing technologies that can be applied to mine electrification. The Challenge is expected to demonstrate an emerging market for charging solutions in mining, accelerate commercialisation of solutions, and integrate innovations from other industries into the mining sector.

‘AVE A LAUGH WITH COMPONENTS ONLY

WWW.COMPONENTSONLY.COM
1300 726 801

Husband calls wife, “Honey, I broke a glass in the kitchen. Wife, “I am coming with the broom.” Husband, “It ain’t urgent. You can come on foot.”

FOR MORE INFORMATION, VISIT THE WEBSITE WWW.CHARGEONINNOVATION.COM.

If you want to do it better, you need to do it differently

Established in 2015 and bringing over 12 years of industry experience, Kelaher Instrumentation and Electrical (KIE) is recognised as the leading electrical contractor in the Gunnedah region.

This position has been built and sustained by our unwavering commitment to service, our consistently superior performance standards and a team comprising of the very best people in the area. Our reliability has created trusted partnerships with our clients, underpinning our business’s growth predominantly through referrals.



Services

Electrical:

- Design and Consultancy
- Electronic Engineering
- Commercial Project

Communications:

- Design and Install
- Service and Maintenance

We Specialise In Solutions



KELAHER
INSTRUMENTATION & ELECTRICAL

18-20 Martin Road
Gunnedah NSW 2380
T: 0457 575 157
E: admin@kelahers.com.au

kelahers.com.au

SHENHUA SCRATCHED

THE NSW GOVERNMENT AND THE CHINA SHENHUA ENERGY COMPANY LIMITED (SHENHUA) (SHENHUA WATERMARK COAL PTY LTD) HAVE REACHED A \$100 MILLION AGREEMENT IN WHICH SHENHUA WILL WITHDRAW ITS MINING LEASE APPLICATION AND SURRENDER ITS DEVELOPMENT CONSENT FOR THE SHENHUA WATERMARK COAL PROJECT.

In 2008, Shenhua paid \$300 million for exploration license 7223 across 20,000 hectares in the basin. Shenhua had been planning to develop the proposed open-cut mine and extract 10 million tonnes of coal a year over 30 years.

Deputy Premier of New South Wales John Barilaro said compromise must be found between mining and agriculture and he thanked Shenhua for their cooperation in reaching this agreement.

“The New South Wales Government is committed to making New South Wales the number one investment destination for mining in Australia, but we need to find a balance, and this decision will deliver certainty to farmers and the Liverpool Plains community, while

guaranteeing protection to parcels of land with high value biodiversity,” Barilaro said. NSW Treasurer Dominic Perrottet said the NSW Government is committed to supporting the common sense, responsible development of our high-quality coal resources, however we are a balanced government, and we also need to protect prime agricultural land. “The cancellation of this project will mean that no open cut coal mining can occur in the area. Coal will of course continue to be an important part of our economy and is essential to supporting jobs, and the NSW Government continues to support coal exploration in areas where it makes sense,” Mr Perrottet said.

NARRABRI SHIRE COUNCIL



L-R PETER CARRETT, PATRICIA HADLEY, MAYOR RON CAMPBELL, MERLE WOOLDRIDGE.

NATIONAL VOLUNTEERS WEEK AWARD ANNOUNCED

Nominees for the 2021 Narrabri Shire National Volunteer Week Award were honoured with a luncheon at the Council Chambers on Friday, 21 May 2021 to commemorate the award announcement.

National Volunteers Week recognises the significant contribution members of our Shire provide through various forms of charitable actions that benefit numerous facets of our community.

Council resolved to award recipients - Merle Wooldridge, Peter Carrett & Patricia Hadley - the 2021 Narrabri Shire Volunteer award for their volunteer work within the community.

Mayor Cr Ron Campbell presented the winners with their awards and congratulated them individually on their contributions within the Narrabri Shire community.

\$29.5 MILLION OF ASSESSED APPLICATIONS A CLEAR INDICATOR OF DEVELOPER CONFIDENCE IN SHIRE

Council presented its March quarterly report at the May Extraordinary Council meeting which provides the community an update on Council's progress in achieving its strategic objectives.

Planning and Environment were a standout department in the quarterly report having

238 applications assessed in the current financial year up until March 2021 with the target of 'greater than 200' being surpassed with another quarter of reporting for this financial year to go.

General Manager Mr Stewart Todd is extremely pleased with the numbers and said, "The figures accurately reflect the volume of work and effort that Council's planning department have been managing over the past nine months.

"The total value of the applications determined this financial year (up until March), is a massive \$29.5 million."

The total value of applications ranges from small developments to multi-million dollar investments in the Shire.

In the 2019/2020 financial year Council determined 182 applications totaling \$18.4 million - with one quarter of reporting to go, that figure has been obliterated for 2020/2021.

Mr Todd added "Council has been enthusiastic about upcoming opportunities for some time now, with a number of large and varied projects setting the Shire on a trajectory of unprecedented growth - it is pleasing to be able to show the community solid figures that clearly demonstrate this growth is in fact here and happening.

"All of the applications that have been assessed have been done so while staff juggle managing other

major projects such as the Northern NSW Inland Port, multiple flood and heritage related studies, as well as working with the NSW Government on Special Activation Precinct investigations."

Council is continuing to field enquiries from businesses looking to establish or relocate in the Shire and are working with several stakeholders across a wide range of industries to assist them where Council can.

N2IP CONTINUES TO STEAM AHEAD

The most significant amendment to the Narrabri Local Environmental Plan (LEP) ever undertaken has been approved, involving the rezoning of the land for the Northern NSW Inland Port (N2IP).

The amendment has facilitated the change of the N2IP land use to part SP1 special activities, SP2 infrastructure, and E3 environmental management. The rezoning changes do not affect the current land use on surrounding properties.

Mayor Ron Campbell has congratulated staff on their extensive efforts in preparing the proposal, liaising with affected landholders and liaising with relevant government authorities in ensuring the proposal was executed in accordance with legislative requirements.

"Now the rezoning process is complete, this provides investors, developers and the community assurance that the Port is 'all go' and that developments can and will occur on the site.

"Narrabri Shire Council is taking the lead in capitalising on the opportunities our region has been

presented with and the N2IP is a once in a lifetime development that will provide prosperity for generations to come."

Council commenced the planning proposal process of amending the LEP in September 2020 with the forwarding of the proposal to the Department of Planning Industry and Environment (DPIE) to request a Gateway Determination. The Gateway Determination was issued in October 2020 and was followed by extensive community consultation regarding the changes, particularly with affected landholders.

General Manager, Mr Stewart Todd has steered the process in achieving the Narrabri Shire community desires to be the leading logistics hub in the northern inland region and said, "The N2IP rezoning is a major milestone in the development of the Port and comes at a time where the Shire is on the radar of investors, the government and industry.

"I could not be any prouder of our dedicated staff who have led the charge in making this amendment a reality; with their attention to detail and ongoing consultation with affected landholders, as well as the wider community, ensuring information was communicated at all key stages.

"The community deserve the economic prosperity that can be achieved with the opportunities available from Inland Rail connectivity, the emergence of new industries and the expansion of existing ones."

Council will continue to keep the community up to date with the progress of this once in a lifetime project.



L-R KRISTIN DE KONINCK, DEVELOPMENT SYSTEMS OFFICER; STEWART TODD, GENERAL MANAGER; BILL BIRCH, MANAGER ECONOMIC DEVELOPMENT; CARA STOLTENBERG, STRATEGIC AND MAJOR PROJECTS PLANNER. PICTURED AT THE N2IP SITE.



DEPUTY PREMIER AND MINISTER FOR REGIONAL NSW JOHN BARILARO WITH MEMBER FOR TAMWORTH KEVIN ANDERSON AND GUNNEDAH MAYOR JAMIE CHAFFEY AT THE GUNNEDAH SALEYARDS.

GUNNEDAH SHIRE COUNCIL

AS WE MOVE INTO THE NEW FINANCIAL YEAR, GUNNEDAH SHIRE CAN EXPECT TO SEE PROGRESS ON MAJOR PROJECTS, WITH A RECORD YEAR OF CAPITAL WORKS.

The 2017-2022 Delivery Program and 2021-22 Operational Plan includes the Shire's strongest-ever year of progress, with \$47 million of projects in the pipeline.

"This document is an impressive blueprint for a huge year for Gunnedah Shire," Gunnedah Mayor Jamie Chaffey said.

"WE KNOW OUR ECONOMY HAS SHOWN A REMARKABLE RESILIENCE, BUT THIS PLAN GIVES US A CLEAR PICTURE OF WHAT WILL BE A RECORD YEAR FOR CAPITAL WORKS, WITH \$47.2 MILLION WORTH OF PROJECTS, MORE THAN DOUBLE THAT OF THE PREVIOUS YEAR. AMONG THOSE PROJECTS ARE \$16 MILLION FOR THE SALEYARDS REDEVELOPMENT AND UPGRADE, \$7.5 MILLION FOR RANGARI ROAD, \$6.2 MILLION FOR KELVIN ROAD, \$4.8 MILLION FOR THE CLIFTON ROAD UPGRADE, AND \$1.2 MILLION FOR THE REPLACEMENT OF ORANGE GROVE ROAD BRIDGE.

"This comes following what has already been a big time of growth. Gunnedah Shire Council remains committed to actively campaigning for the best results for our community and working with all levels of government to make this happen."



GUNNEDAH MAYOR JAMIE CHAFFEY AND MEMBER FOR TAMWORTH KEVIN ANDERSON AT THE START OF WORK ON THE CLIFTON ROAD UPGRADE.

Cr Chaffey said among the projects is the redevelopment of the Gunnedah Saleyards. "The saleyards are a powerhouse in the livestock industry," he said. "The facility is the fourth largest selling centre of cattle in New South Wales, and the eighth largest in Australia, with sales of more than \$100 million every year.

"This is the next stage in history for the saleyards. From its beginnings in 1919, the facility has grown to meet the challenges 100 years have thrown at it. Now, it will be redeveloped to meet the challenges of the next 100 years."

"IN THE COMING MONTHS, COUNCIL WILL PROGRESS A MASSIVE REDEVELOPMENT OF THE SALEYARDS MADE POSSIBLE BY \$14 MILLION IN FUNDING FROM THE NSW GOVERNMENT, AND A GUNNEDAH SHIRE COUNCIL CO-CONTRIBUTION OF \$3.55 MILLION."

Regional Saleyards upgrade would help turbocharge the local economy, bringing money into town and supporting the creation of new jobs.

"The Gunnedah Saleyards is at the heart of the Tamworth region with more than 1.2 million head of cattle sold here in the past decade, and these upgrades will allow more people to use these facilities and hopefully lead to more sales," Mr Barilaro said.

The saleyards will be built to include state-of-the-art industry features for smart technology applications, a café and education centre, a hectare of work areas and cattle holding yards under roof where possible, a major upgrade to the truck wash facility, a new entry, new internal roads and lighting.

A development application for the project has already been lodged.

Cr Chaffey said the project would improve the aesthetics on one of Gunnedah's entrances and cement Gunnedah's position as a leader among regional towns.

"We are progressing our Shire on all fronts, to ensure it remains not only a great place to live and raise a family, but a place with great employment prospects and a growing economy," he said.

MORGAN ENGINEERING

Manufacturing

Fabrication

Design & Drafting

Line Boring

Mobile Milling

On-site Machining

Service Exchange Components

Liquid Nitrogen Service & Supply

in

f

o

Engineered Solutions that get it done

morganengineering.com.au | 02 6572 2032

A few dollars from your pay will help save lives

Since 1975, the Westpac Rescue Helicopter Service has been there for our community. You can become a supporter of this life saving service which operates 24-7 by becoming a regular donor.

Whether you're at work, travelling or spending time with family or friends, it's reassuring to know the Rescue Helicopter is there for our community.

Joining our Workplace Giving Program is simple and makes a difference.

Contact your Community Liaison Officer on 1800 155 155 or email enquiries@rescuehelicopter.com.au

1800 155 155 | www.rescuehelicopter.com.au

Westpac Rescue Helicopter Service

f

t

o

h

12 WINTER 2021 | @ THE COALFACE NORTH WEST

@ THE COALFACE NORTH WEST | WINTER 2021 13



SUPPLIER INSIDER

CONTINENTAL EAGLE

Tell us about the business?

Continental Eagle is a Narrabri based Industrial and Engineering Supplies company, established in 1991 to supply local

customers and clients across a wide swathe of the North West, southern NSW and southern Queensland.

John van der Vliet, Managing Director, has led Continental

Eagle from its earliest days and through its transition from a supplier of Continental Eagle cotton gin repair parts to include servicing the needs of all Industrial & Engineering Supplies. John has to date a tally of 39 years' experience in the Cotton Ginning Industry, firstly working as a cotton ginner for 9 years, then 30 years in his current role at Continental Eagle developing the business, tutoring staff and building long term relationships with customers to provide them with excellent service for whatever their requirements may be in Cotton Gin repair parts or Industrial & Engineering Supplies.

How long have you been doing business?

Established in 1991 – you do the math!

How many people work for the business?

There's 9 of us. Team Continental Eagle comprises of salespeople Matthew O'Connor – 24 years' experience; Ian Johnston – 17 years' experience; Dave Noble being 3 years with the company; and Mathew Dunn 2 years. In accounts we have Sam Thurston – 11 years; and our casuals, in embroidery

Barbara Murphy; in payroll Sheryl Skues; and Admin relief Joanne Anderson.

Describe a typical day at 'The office'.

Busy, but at the same time fun. A typical day could include serving our customers, revamping the store and inventory, restocking the items we are known for and the parts that you can't find anywhere else.

What's the best thing about the business?

Our loyal customers. We have loyal customers who have been there all the way through the good and the tough times. A VERY BIG THANK YOU.

The worst thing?

None.

What are the biggest challenges facing your business?

At the moment, as with many other businesses in the area, drought and the mouse plague.

What is the biggest opportunity for your business right now?

Coal, Gas, Inland Rail - Continental Eagle works closely with the cotton ginning industry, mining & gas, rail & road

transport, engineering, farming, shire councils and the wider community within the large cotton growing area from Emerald, Queensland in the north to Hay and Griffith area in southern NSW and out west to Bourke NSW, selling cotton gin repair parts, a diverse range of industrial engineering supplies and all occupational health and safety requirements.

What is the business most proud of?

That we are still here servicing Narrabri and the greater outer region 30 years on.

Community or other causes close to its heart and values?

We're proud to have been supporters and/or sponsors of local sporting clubs and events; participated in the Community Kids Narrabri 'Random Act of Kindness'; donated and installed an automatic hand sanitiser at the front door of Kogil Street Pre-School; and raised money for organisations close to our hearts like the Westpac Rescue Helicopter. And that's just to name a few! We love supporting our local community.

- Domestic
- Commercial
- Mining
- Industrial

Pettonna Services

SERVICING ► BOGGABRI ► GUNNEDAH ► NARRABRI

A 138 Merton Street, Boggabri
P 02 6743 4370 | M 0428 434 450 | E office@petonnaservices.com.au



PROUD SUPPORTER OF
THE BOGGY NINJA

SUPPLYING

- Plumbing
- Roofing
- Gutters
- LP Gasfitting
- Polywelding
- Scaffolding

Licence No: 242165C



MY MINING LIFE

NATHAN LEONARD

Who are you and what do you do?

My name is Nathan Leonard. I work as a Trainer/Assessor at Idemitsu Boggabri Coal. I get to train everyone from new to industry to the more experienced operators on how to operate a range of different pieces of equipment on a mine site.

When did you start in the mining industry and what was your first job?

I started in the mining industry in 2008 as a Haul Truck operator at the Werris Creek Coal Mine.

My first job as a 15-year-old boy

was working as a bowser boy pumping diesel. Since those days I have had all sorts of different jobs ranging from laboring in the building industry to operating small civil earth works machinery to managing a Hotel before I found my way in to mining where I have been working ever since.

How different is your job now to what you wanted to be when you were a kid?

When I was growing up, I always wanted to be a builder, so I would say my current occupation is very different to what I always imagined

I would be doing for a living.

What's a usual day at work entail?

I start work at 5.30am, where we go through the training requirements for the oncoming shift and organise the paperwork required for training the operator on that piece of equipment. 6am PSI meeting with the production crew followed by training and operating in the pit.

What's the best thing about your job?

I love the variety my job offers; I get to do everything from present onsite inductions with new starters to training people that have come from all sorts of different working backgrounds and help them achieve a competency to operate a piece of equipment in a Coal Mine. I also get to help other more experienced operators upskill to other pieces of equipment.

The worst thing?

Everyone wants to be trained on every piece of equipment, unfortunately that is just not possible.

What's the biggest challenge you've had to overcome?

Some of the biggest challenges can also offer some of the most rewarding thing's about being a trainer and that is getting to train people from all different backgrounds and being able to take the time to understand each individuals' situations and how they best learn whilst undertaking training. not everyone responds to the same training techniques.

What has been your proudest achievement?

I always enjoy getting positive feedback from people that I have trained and by seeing the level of

satisfaction people get from gaining a new skill on a piece of equipment that they could not operate previously.

What's something about your job that would surprise people to know?

I'm not sure it would surprise people, but you get a great deal of satisfaction from being able to pass on your knowledge to others.

What's a funny story about work that you can tell?

I once witnessed (in my civil days) a watercart operator fill up at a dam and then drive off before undoing the hose connected to the pump, the operator was driving around the job with the hose dragging along behind them with truckies calling the operator up on the two-way radio to let them know they still had something behind them.

What do you do in your downtime?

I love spending time with my family (my wife, Kristy and three sons, Chase, Cooper and Cruz), going to the beach and following the Mighty Newcastle Knights in the NRL.

The mining industry gets more than its fair share of criticism. What is your view of our industry and the impact is has?

Not only does the mining industry contribute so much money to Australia's economy, but it also continues to contribute to regional Australia's development, providing jobs, training, improved infrastructure, support for sporting clubs and charities such as the Westpac Rescue Helicopter.

I agree mining has an obligation to work together with the government and the local communities in which they operate to promote mutually beneficial relationships with each other.

WORK IN THE HUNTER VALLEY'S WORLD-CLASS MINES, TRAVEL THE WORLD!

THAT'S JUST ONE OF THE GREAT MESSAGES IN TWO NEW VIDEOS PRODUCED IN PARTNERSHIP BETWEEN THE MINERALS COUNCIL OF AUSTRALIA AND THE UNIVERSITY OF NSW TO ENTICE MORE YOUNG PEOPLE TO CHOOSE A CAREER AS A MINING ENGINEER.

Featuring mine planning engineers Olivia Gall and Luke Saad – employed at Glencore's Bulga Coal operations – the videos will complement UNSW's promotion of mining engineering as a pathway into a rewarding, diverse career.

While a number of students are choosing engineering, too few are then specialising in mining engineering.

As Coalface readers would be well aware, more mines and/or larger mines means more mining engineers are required!

Liv and Luke both rated their UNSW degrees very highly in terms of the practical skills they provided and the portability of those skills – as well as outlining what a great time they're having working as mining engineers.

'BEING A MINING ENGINEER IS A VERY RARE WORK EXPERIENCE, WHERE YOU GET TO BE STARING AT A COMPUTER ONE DAY DESIGNING SOMETHING AND WITHIN TWO TO THREE DAYS YOU'RE SEEING IT IN ACTION IN THE PIT EXACTLY AS YOU'D DESIGNED IT,' LIV SAYS.

'To be able to work in that environment you get real job satisfaction, as well as learning on the go.' Liv did two overseas field trips, including

an eight-month field trip to Austria which she says was invaluable in seeing how mines operate in other countries.

For Luke's part, he cites the great support he got when starting new on site as a graduate and the opportunities on offer as central to his job satisfaction.

'When choosing a career in mining, I was always open to adventure and seeking to explore new places,' Luke says.

A Bachelor of Engineering (Honours) (Mining) at UNSW is a four-year, full-time degree that welcomes domestic and international students.

Mining engineers evaluate, plan and oversee the construction of a mine and are involved through all phases.

UNSW also has strong partnerships with industry with a five-star rating in employability, teaching and research and big recent investments funding cutting-edge lab facilities.

And of course with the global mining industry worth hundreds of billions of dollars and growing demand for minerals, mining engineers can enjoy successful careers not only in Australia, but also overseas.

THE VIDEOS CAN BE FOUND ON THE MINERALS COUNCIL OF AUSTRALIA'S YOUTUBE CHANNEL UNDER 'EXPLORE MINING ENGINEERING AT UNSW'.

MAD MONITOR

FATALITIES WITHIN THE MINING SECTOR CAUSED BY TOXIC GASES ARE UNACCEPTABLE, YET STILL OCCUR, SO BECKER MINING SYSTEMS HAVE STEPPED IN INTRODUCING SMARTSENSE®.

The smartSense® line is a high accuracy gas monitoring suite of solutions for your everyday mine operation. Each device can monitor multiple gases, including oxygen, methane, carbon dioxide, carbon monoxide, hydrogen sulphide and nitrogen dioxide. These devices also have the capacity to warn all miners in proximity of harmful gases to evacuate the area until proper measures have been taken to address the situation. Put simply, it saves lives.

WWW.BECKER-MINING.COM



STOP THE DROPS

GRIPPS GLOBAL HAVE DEVELOPED A TOTAL-TURN-KEY SOLUTION FOR THE MANAGEMENT OF WORKING AT HEIGHTS TO HELP KEEP OUR OPERATORS SAFE.

Containing over 840 individual components, the Drop Store really is a one stop shop, catering for up to 50 height workers at time. It's built tough and secure with its industrial duty steel construction and lockable keyed doors with 3 locking points. It even comes with certified training in dropped object prevention and best practices for 5 people.

WWW.GRIPPSGLOBAL.COM

POLLUTION PROTECTION

ISOLATE DRAINS AND PREVENT SPILLS FROM LEAVING YOUR SITE WITH THIS HELPFUL NEW PRODUCT NOW AVAILABLE AT INDUSTROQUIP™.

DrainSAFE™ is a simple and cost-effective stormwater isolation and pollution prevention device that installs in a stormwater drain pit. Once installed, the device can be used to stop spills from entering the stormwater system. In the open position, the diffuser with weir traps gross pollutants, sediment and debris. In the closed position, the closed isolation valve will block the drain and stop the flow of contaminants through the device. You'll be able to stop spills and control pollution to ensure you're complying with all environmental regulations.

WWW.INDUSTROQUIP.COM.AU

SMART WEAR SOLUTION

BRADKEN'S NEW WIRELESS SMARTLINER® IS HERE AND IT'S THE SAFE AND EASY SOLUTION TO GET WEAR DATA FROM YOUR LINERS.

Wireless SmartLiner sensors are embedded into Bradken liners and are cloud connected via secure gateways directly to Bradken Insite, giving you access to wear data and reports at any time. This is the wear solution that is



beyond smart. By using the SmartLiner your operation will not only see improved safety allowing operators to access live wear data remotely online removing the need for manual inspection of hazardous chutes and hoppers, but also reduce maintenance and downtime, and increase efficiency.

WWW.BRADKEN.COM

BRAWNY BITS



WWW.EPIROC.COM

WITH THE NEW EPSILON² PREMIUM TRICONE DRILL BIT, SURFACE MINING PROFESSIONALS WILL ENJOY UP TO 100% LONGER DISTANCE DRILLED BEFORE BIT DISCARD.

Thanks to smart patented features, Epsilon² will greatly improve drilling productivity through extended bit life and a faster rate of penetration. The new air bearing bit has been tested thoroughly in the field by selected customers in highly diverse operating conditions in North America, South America and Asia. The tests show an average of more than 60 percent longer distance drilled before bit discard compared to the previous Epsilon generation – peaking at over 100 percent in some cases.



THE MSA MAGNETICS MAGNETIC SUPER SWEEPER RANGE OFFERS ONE OF THE QUICKEST, EASIEST AND MOST EFFICIENT METHODS OF REMOVING METAL PIECES OFF THE FLOOR.

When you work in an environment like the mining industry, you're bound to drop a nut or bolt every now and then and picking them up by hand isn't at all fun. With a 14kg capacity, the Super Sweeper allows you to pick up nuts, bolts, rivet ends, screws, drillings and swarf of the workshop floor without having to bend down and break your back. Simply role this handy helper across the floor and it will do the job for you, then release the handle for easy removal of debris.

WWW.MSAMAGNETICS.COM.AU



EDUCTORS ARE A GAME CHANGER WHEN IT COMES TO MIXING LIQUIDS IN SUSPENSION BECAUSE THEY ELIMINATE THE NEED FOR MECHANICAL DEVICES, BUT SOMETIMES YOU NEED A BESPOKE SOLUTION FOR LARGE TANKS.

The developer of a new residential area in the ACT required custom designed and manufactured eductors and as part of the design process, the eductors were required to accommodate precise specifications. Tecpro Australia custom manufactured giant cast 316 stainless steel eductors that are maintenance free while the pumps used to fill the reservoir are located outside the tank. Tecpro can design the optimal size, location, orientation and number of eductors required for any application.

WWW.JACON.COM.AU

TRUSTED TRANSPORT

THE JACON PERSONNEL & SERVICE VEHICLE IS A UNIQUE AND RELIABLE UTILITY VEHICLE, WITH CAPABILITIES OF TRANSPORTING 8 MINERS UNDERGROUND.

If you're looking for a vehicle that will last the harsh underground conditions, the JACON Personnel & Service Vehicle may just be the one for the job. It's easy manoeuvrability and short turning radius makes for the ideal underground vehicle increasing productivity and reducing costs. And you'll know your team will be safe on the job with the numerous safety features included.



CALLING ALL EXHIBITORS

eIMEx
GUNNEDAH

WHITEHAVEN COAL

ENERGY, INNOVATION & MINING EXPO

OCTOBER 8-9, 2021

GUNNEDAH SHOWGROUND

In 2021, the Energy, Innovation & Mining Expo (eIMEx) returns with a program even more finely tuned to the needs and interests of Australia's growing and changing energy, innovation and mining industries.

WHY EXHIBIT?

eIMEx provides a tailored opportunity for a wide variety of companies involved in energy, innovation and mining to take part in an industry-focused exhibition in a deeply relevant location.

OPPORTUNITIES

- High visibility of your company to key players within the industry
- Highlight your industry value within the community
- Meet new clients
- Engage with the community
- Platform to launch new products
- Generate sales and leads
- Network and socialise
- Learn more about industry and other businesses/new developments

SUPPORTED BY



EARLY BIRD SPECIAL! 10% DISCOUNT ON SITE FEES FOR BOOKINGS MADE BY 30 JULY 2021

Sponsorship Opportunities
AVAILABLE NOW



www.eimexgunnedah.net.au

REQUEST FOR QUOTE

Anthea Guest, Administration Officer
E: admin@eimexgunnedah.net.au
T: 0409 368 444

‘AVE A
LAUGH

WITH
COMPONENTS
ONLY

WWW.COMPONENTSONLY.COM
1300 726 801

A devoted wife had spent her lifetime taking care of her husband. When he was slipping in and out of a coma for several months, she stayed by his bedside every single day. When he came to, he motioned for her to come nearer.

As she sat by him, he said, “You know what? You have been with me all through the bad times. “When I got fired, you were there to support me. When my business failed, you were there. When I got shot, you were by my side. When we lost the house, you gave me support. When my health started failing, you were still by my side. You know what?”

“What, dear?” his wife asked gently.

“I think you bring me bad luck.”

LEARN FROM THE
LAWMAN

STUART BARNETT IS OUR MINING INDUSTRY’S LEADING PERSONAL INJURY LAWYER. THIS EDITION HE HAS SOME IMPORTANT ADVICE IN RELATION TO A POWER OF ATTORNEY AND ENDURING GUARDIANSHIP.

Many of you will know someone who, through injury, age or disease is unable to manage their financial affairs or health needs. Alternatively, as you approach retirement your financial advisor may ask you the question; “have you a Power of Attorney and Enduring Guardianship in place?” You probably said to yourself, “what are they and do I need them?”

The answer is, a Power of Attorney allows you to appoint a person or persons to manage your financial affairs on your behalf. A Enduring Guardianship allows you to appoint a person or persons to manage your lifestyle medical and general health when you are unable to do so yourself. Whether you need one is a personal decision but remember this, once you lose your mental capacity it’s too late, so at the very least you need to consider the question now.

YOU MAY EXECUTE A POWER OF ATTORNEY FOR PRACTICAL OR BUSINESS REASONS, FOR EXAMPLE YOU MAY APPOINT A PERSON, KNOWN AS YOUR ATTORNEY FOR A SPECIFIC TASK OR PERIOD.

For example you are going on an overseas holiday and you know that there will be documents to sign while you are away. Alternatively, you may execute an Enduring Power of Attorney to allow your attorney to manage your financial affairs even after you lose your mental capacity.

AN ENDURING GUARDIANSHIP WILL ALLOW YOUR ATTORNEY TO MAKE HEALTH, MEDICAL AND LIFESTYLE DECISIONS FOR YOU AFTER YOU LOSE THE MENTAL CAPACITY TO DO SO YOURSELF.

This might include decisions about what medical treatment you will receive, whether you will be hospitalised or placed in



a nursing home or managed at home and even whether attempts are to be made to revive you in the event that are unable to sustain your own life without artificial assistance. If you have strong views about this last aspect, that is, what emergency treatment you are to receive or not to receive in certain circumstances then you can make an Advanced Care Directive as part of your Enduring Guardianship or as a separate document. In doing so your Guardian will have a clear understanding of your wishes.

YOUR POWER OF ATTORNEY AND ENDURING GUARDIANSHIP ARE VERY IMPORTANT DOCUMENTS AND YOU SHOULD ONLY APPOINT SOMEONE THAT YOU TRUST AND IN THE EVENT THAT CIRCUMSTANCE CHANGE YOU MUST TAKE STEPS TO EXECUTE UPDATED DOCUMENTS AND DESTROY THE OLD ONES.

Just like you review other aspects of your affairs the adequacy and relevance of your Power of Attorney and Enduring Guardianship should be reviewed periodically. A lawyer can prepare and witness both types of documents for you at a relatively inexpensive cost.

A DRIVE TO
SURVIVE

FOR THOSE OF YOU WITH NETFLIX, YOU MAY HAVE RECENTLY WATCHED ‘FORMULA 1: DRIVE TO SURVIVE’. IF YOU HAVEN’T, DO, THIS DOCUMENTARY PRODUCED IN COLLABORATION BETWEEN NETFLIX AND FORMULA ONE GIVES A BEHIND-THE-SCENES LOOK AT THE DRIVERS AND RACES OF THE F1 WORLD CHAMPIONSHIP.

More than just racing, it looks ‘under the bonnet’ at the ‘players’ that make up Formula 1, the personalities, the manufacturers, their cars, drivers and mind-BLOWING operating budgets!

Tasked with building faster, more reliable race cars year-on-year, these teams (even the smallest ones) spend extraordinary amounts of money on their research and development to attain marginal gains that determine the winners and losers of the competition.

One of these companies is Williams Racing, a well-known British Formula One team and constructor. The penultimate racing team of the 80’s and 90’s, Williams has struggled in recent years (decades...), to win against the likes of Mercedes, Red Bull, Ferrari, Renault, and McLaren. Fortunately, there is more

to their Company than just the F1, with a lesser-known subsidiary Williams Advanced Engineering (WAE) fueling, I suspect, their blind ambitions for motorsport!

IN OCTOBER 2019, THEY BECAME PART OF ANGLOAMERICAN’S ‘FUTURESMAST MINING’ INNOVATION PROGRAM TO DEVELOP A HYDROGEN-POWERED LARGE MINING TRUCK AT ANGLO’S MOGALAKWENA OPEN-PIT PLATINUM MINE IN SOUTH AFRICA.

Working in collaboration with global energy services company ENGIE and Ballard Power Systems, WAE are assisting Anglo decarbonize their mining operations globally as part of their broader sustainable mining vision.

Supplying the bulk of battery systems to the global electric racing series

including Formula E, Extreme E and ETCR, WAE was called upon for the supply of a scalable high-power modular lithium-ion battery system that when paired with hydrogen fuel cells would power Anglo’s mining truck of the future. Using 320 megawatts of solar power generation capacity onsite to produce up to 1 ton of hydrogen a day, Anglo plan to sustainably power their trucks.

Really brilliant stuff and a strategy that considers more than just the machine, with a deeper understanding of how to generate the power and charge a mining machine sustainably and remotely.

To the mining industry’s credit, AngloAmerican are not the only Company leading the charge (excuse the pun), with other notable ventures including the Green Hydrogen Consortium comprising AngloAmerican, BHP, FMG and Hatch; Komatsu with Proterra; and the individual pursuits by identities such as Andrew ‘Twiggy’ Forrest, who in 2018 contributed A\$20m to the CSIRO to establish a hydrogen research partnership.

Technology (and solutions for that matter) are rarely developed in isolation and with mining equipment the two specific technologies in development are

LIKE TO KNOW MORE? GOOGLE ‘FUTURESMAST MINING’ AND ‘EMINING AG’

battery and hydrogen-power. Depending upon the ‘outfit’, this technology is being pursued independently or together as a hybrid, with developments extending to the power generation and recharge units.

While EV’s remain all the rage for consumers, there is in the commercial sector a strong and growing argument for hydrogen fuel that when mastered at scale may well provide the cleaner, greener, and more sustainable fuel of the future.

As with WAE and the BIG budgets ‘blown’ on motorsport, the contribution by industries such as mining, aviation, rail, and motorsport remain invaluable for the rapid development and testing of technology at scale that accelerate the solutions of tomorrow, today.

*This is general advice and because your individual circumstances will vary, I recommend seeking out specific advice for your needs. **STUART BARNETT, SLATER & GORDON LAWYERS***

Legendary
Dewatering
Pumps

Our reputation is
your peace of mind.

Uncompromising design and engineering constructed with a superb build quality, the Truflo Pumping Systems range guarantees you peace of mind of a job that will be well done. Our promise to you and your operation is excellence in service, brilliance in heavy duty pumping performance backed by legendary support – pumps that last and last.

1800 813 677
www.truflopumps.com.au

A PLUS
CONTRACTING
& POLY WELDING

PHONE
0419 693 072
ON CALL
7 DAYS

DAM
CLEANING
& DOZER
EXPERTS

TIME TO CLEAN UP
YOUR PROPERTY?

WWW.APLUSCONTRACTING.COM.AU



Mines Rescue

Safety training for all industries



Mines Rescue has provided safety leadership and training for nearly 100 years, but our safety training is not limited to mining.

Our courses equip attendees to perform first aid and other safety duties. Our training, consultancy and workplace education programs can be tailored to your specific needs.

For more information please visit www.coalservices.com.au or contact your local Mines Rescue station

MineWell

IF YOU WORK IN MINING AND FEEL THAT YOUR MENTAL HEALTH IS UNDER STRAIN BECAUSE OF STRESS, HELP IS NOW AT HAND – OR IN YOUR POCKET – WITH AUSTRALIA’S FIRST PREVENTATIVE MENTAL HEALTH MOBILE APP, MINEWELL.



Developed by miners for miners, MineWell is a preventative mental health and wellbeing app developed by the MCA and Utility Creative to provide prevention, intervention and education in mental health and wellbeing for Australian mining workers and their families.

Mining is no different to the general community in the prevalence of mental health challenges.

The MineWell app – developed by the Minerals Council of Australia and Utility Creative and launched nationally this month – is a great step forward in making help available to mining workers and their families who may be going through a tough time because of long hours, separation, isolation or financial stress.

In particular, many fly in fly out (FIFO) workers have been affected by the COVID-19 pandemic, which has resulted in longer shifts and more time away from family and friends.

WHILE TALKING WITH YOUR MATES AND FAMILY IS ALWAYS IMPORTANT – ALONG WITH SERVICES LIKE MATES IN MINING – MINEWELL IS DESIGNED TO HELP WORKERS (ESPECIALLY SHIFT WORKERS) REDUCE STRESS AND BUILD BETTER MENTAL HEALTH AND RESILIENCE THROUGH BREATHING, BETTER SLEEP, EXERCISE, FINANCIAL PLANNING AND SOCIAL CONNECTION.

The app includes features such as personalised scheduling for shift workers to promote better sleep and alertness whilst on shift, advice and exercises for improving sleep quality,

staying active and positive and staying well during the COVID-19 pandemic and tools to take control through breathing, taking a reality check, managing emotions and releasing tension.

For people who might have missed the odd important date while on shift and been in the doghouse as a result, it also includes a social connection tool to schedule anniversaries, birthdays, catch-ups with family and friends and other important events.

Financial worries are covered as well, with the app’s Budget Well feature to set a target budget, savings goals and help track progress to reduce stress and anxiety relating to financial management.

IT’S ALL ABOUT BETTER EVERYDAY PHYSICAL AND MENTAL HEALTH.

The MCA was lucky to secure Renata Roberts from Bloomfield, a champion for better mental health and Exceptional Woman in Australian Resources, to do the introductory video for the app.

‘When I heard about MineWell, I was very happy to be able to support promotion of this important tool,’ Renata says.

‘This is an app developed by miners, for miners, and a quick and simple onboarding process allows you to tailor the app to support your area of work within the mining industry.’

Mental health is central to health and safety, building on the Australian mining sector’s world leadership in workplace health and safety, and the MCA and its partners have worked over many years to build industry understanding and capacity including through the Blueprint for Mental Health and Wellbeing industry guide.

Mental health problems can have an adverse impact on mining workers, their families and industry productivity.

All personal information provided by app users remains private, is only stored on their device and cannot be accessed, viewed or gathered by others.

WIN! SWAG BAG

YOU ARE GUARANTEED TO ADD A LITTLE SWAG TO YOUR SHIFT WITH OUR INSULATED PVC CRIB BAG.

Made by Rugged Xtremes and in classic Coalface yellow, we reckon our crib bag will be as sought after as a Louis Vuitton.

FOR YOUR CHANCE TO WIN, SIMPLY SMS: BAG WITH SWAG, YOUR NAME, AND YOUR EMAIL ADDRESS TO 0438 474 290.



Limit of one entry per person. By submitting an entry, you consent to the use of your contact details for promotional and marketing purposes.

MINEWELL IS AVAILABLE FREE TO ALL MINE WORKERS AND THEIR FAMILIES THROUGH THE APPLE APP STORE (FOR IPHONES) AND GOOGLE PLAY (FOR ANDROID PHONES).

WELD DONE!

GLENORE COAL ASSETS AUSTRALIA (GCAA) HAS DEVELOPED A NEW WELDER COMPETENCY TRAINING PROGRAM DEEMED AN INDUSTRY “GAME-CHANGER” BY AUSTRALIA’S GOVERNING BODY FOR WELDING, WELD AUSTRALIA.

The GCAA Asset Management team created the new program to improve consistency among fabricators, boilermakers and third party repairers across their coal operations.

GCAA Reliability Engineer, Garry Horner, said there are several standards that cover certification of a welder’s competency, which can lead to confusion on site.

“There are a number of Australian and International standards that cover certification of a welder’s competency and it can be difficult for supervisors to confirm what level of competency matches the requirements of a weld,” Garry said.

“IN OUR NEW PROGRAM, WE HAVE DEVELOPED COMPETENCY LEVELS AIMED AT ESTABLISHING THE MINIMUM REQUIREMENTS FOR COMMON REPAIRS CONDUCTED ON OPEN CUT MOBILE MINING EQUIPMENT, AS THEY MAKE UP THE LARGEST VOLUME OF ACTIVITY.”

The program also offers in-depth knowledge on high fatigue areas on open cut mobile equipment and is in line with the ISO AS/NZS 9606 standard.

Welding is a crucial part of every mining operation, given the scale of the machinery and material used. For example, an average size bucket has about 60 metres of structural joints, adding up to

almost 4km of deposited weld metal.

“Glencore’s fabricators across NSW and Queensland, contractors based at site and third party fabricators coming onto site will all be required to participate in this training,” Garry said.

“This will ensure their skills remain up-to-date, with routine validation every six months and resitting of the program every three years.”

WELD AUSTRALIA SAID THE NEW PROGRAM WAS AN IMPORTANT STEP FORWARD FOR THE MINING INDUSTRY AND WOULD HELP TO IMPROVE PERFORMANCE AND RELIABILITY ACROSS THE SECTOR.

“Developing and fine-tuning the program has been a fantastic collaboration between Weld Australia and Glencore,” Weld Australia Qualification and Certification Manager, Paolo Corronca, said.

“Having theory modules dedicated to the specific industry needs, backed with practical tests done in accordance with AS/NZS ISO 9606 ensure the greatest level of confidence for Glencore and meets the current International trend.”

Paolo said Weld Australia aims to see the program embraced across the whole mining industry, to avoid welder competency shortfalls, costly repetition or one-off schemes.

INCREASE IN INJURIES



A REVIEW BY THE NSW RESOURCES REGULATOR HAS FOUND A SIGNIFICANT LONG-TERM DOWNWARD TREND IN THE SERIOUS INJURY FREQUENCY RATE FOR THE NSW MINING SECTOR SINCE 2006, HOWEVER THERE HAS BEEN A STEADY INCREASE IN SERIOUS INJURIES OVER THE LAST 3 YEARS. IT’S A REMINDER THAT WE ALL MUST STAY ALERT AND CONTINUE TO STRIVE FOR THE HIGHEST SAFETY STANDARDS.

(WITH A MECHANISM OF BEING HIT BY MOVING OBJECTS OR FALLS, TRIPS AND SLIPS).

The analysis also highlighted the increased prevalence of serious injury occurring mid-way and towards the end of a worker’s shift.

While the data indicates a general improvement in safety performance during the past decade, the review sought to identify any factors that may have contributed to the increases observed in serious injury incident notifications during the past three years and whether there were any issues that may have required a targeted response.

It concluded that multiple factors contribute to incident, injury and illness notification levels and rates and it was unlikely that a single factor was the cause for the recent changes, however, because of the relatively small sample size it determined it was not possible to draw any reliable conclusions about the cause.

The NSW Resources Regulator has reviewed the reporting of serious injuries and illnesses by mine operators and reported the findings to the NSW Mine Safety Advisory Council.

While a significant long-term downward trend in the serious injury frequency rate (SIFR) (per million hours worked) has been reported by industry since 2006, the review examined the identified increased serious injuries in the NSW mining industry over the last 3 years.

The increased serious injury incident notifications were made by the underground coal, surface coal, underground metalliferous and extractives sectors with 78 in 2017-18 to 94 in 2018-19 and 106 in 2019-20.

Analysis of these serious injuries by bodily location over the 3 years found that one-third of all notified injuries were hand, fingers or wrist injuries. Further, a substantial proportion (45%) of these injuries occurred in the underground

coal sector. Notable increases in injuries to head or neck and upper limbs were also observed in the underground coal sector.

A KEY FINDING SHOWED THAT ALMOST 80% OF ALL SERIOUS INJURIES NOTIFIED INVOLVED BEING HIT BY MOVING OBJECTS OR FALLS, TRIPS AND SLIPS OF A PERSON, WITH INCREASES SEEN IN INJURIES TO THE HEAD OR NECK (WITH A MECHANISM OF BEING HIT BY MOVING OBJECTS OR HITTING OBJECTS WITH A PART OF THE BODY) AND UPPER LIMBS





DO YOU HAVE A DEATH WISH?

A DEATH WISH IS NOT SOMETHING WE WOULD NORMALLY WANT, BUT SOON YOU'RE GOING TO WANT IT EVERY MORNING WITH YOUR BREKKY.

Created by using the strongest combination of beans and a perfect roasting process, Death Wish Coffee Co. are willing to refund you in full if it's not the strongest coffee you've ever had. Despite its name, you won't die after drinking this smooth, never-bitter tasting coffee with subtle notes of cherry and chocolate. But be warned, you may just become addicted after experiencing the clarity and focus that comes with a damn strong coffee.

WWW.DEATHWISHCOFFEE.COM

WHAT'S IN THE BOX?

I'VE JUST DISCOVERED ONE OF THE COOLEST WAYS FOR A FELLA TO MAKE HIMSELF FEEL SPECIAL ONCE A MONTH, AND IT STARTS WITH SIGNING UP TO BESPOKE POST.

This brilliant company has given spoiling yourself a new meaning. As part of the Bespoke Post membership, you'll begin by taking a quiz to tell them what you like and don't like, and they'll post you your first box of goodies based on your answers. After you receive your first box, each month you will then get an email with a preview of what's in your box with 5 days to change colour and sizes, add goods to your box or skip the box altogether. There's zero commitment and you're in complete control. Who better to spoil every month than your fabulous self?



WWW.BESPOKEPOST.COM

HERE FOR COLD BEER

WWW.CORKCICLE.COM



LIFE IS TOO SHORT TO DRINK WARM BEER, SO CORCKCICLE HAVE INVENTED THE ONE AND ONLY IN-BOTTLE, DRINK-THROUGH BEER CHILLER APTLY NAMED THE CHILLSNER.

Simply pop your Chillsner in the freezer for at least 45 minutes and insert into your beer bottle to keep it cold to the last sip. The stainless steel frame freezes quickly and cleans easily, is dishwasher safe and filled with proprietary non-toxic thermal gel. Flow vents deliver a smooth, consistent flow of perfectly chilled beer so you'll never have to experience the buzz kill of a warm beer again.

SUPER SOCKS

THE DEXSHELL WATERPROOF SOCKS WILL IMPROVE THE WAY YOU WORK AND PLAY, KEEPING YOUR FEET DRY NO MATTER WHAT THE ENVIRONMENT.

When you work in the mining industry, you know how hard it can be to spend a 12 hour shift with cold, wet feet. These warm, breathable, moisture repellent and anti-static, Merino socks are a game changer keeping your feet dry on site, in the bush, when hiking and during any other activity where you might come across arduous wet environments. And most importantly, Merino wool is naturally odour resistant as well. If your feet smell anything like my partners after hard days yakka, these are a godsend.

WWW.DEXSHELLAUSTRALIA.COM.AU



WWW.ZIPPO.COM

THE SAW WITH MORE

ZIPPO'S 4-IN-1 WOODSMAN AXESAW IS A GAME CHANGER FOR YOUR NEXT OUTDOOR ADVENTURE.

It chops, it shaves tinder, it saws, and it hammers, and it looks pretty darn cool as well. The might AxeSaw's versatility is something else, working as a mallet, bow saw and hatchet so you can set up camp and get a fire going with ease. This baby really does take on the lot, meaning less to pack and more power in just one handy tool.

GAME ON

YOU CAN NOW GAME ANYWHERE, ANYTIME BY TRANSFORMING YOUR ANDROID SMARTPHONE OR TABLET INTO A MOBILE GAMING SYSTEM WITH THE MOGA PRO POWER.

Being stuck in the confines of your home when you're gaming is now a thing of the past and I can already hear gamers everywhere celebrating this revolutionary product. The MOGA Power Pro has a design and button layout similar to traditional console controllers, offering you superior game control and automatically pairs with your mobile device using Bluetooth. It even charges your phone while you play.

WWW.POWERA.COM

KING OF THE GRILL

NEVER BEFORE HAS LIGHTING UP THE GRILL BEEN SO FAST, SO FUN AND SO DAMN COOL WITH THE GRILLGUN BY GRILLBLAZER.

This high power, clean burning, 400,000+ BTU torch looks like a semi-automatic, slide action pistol and blows direct, intense fire directly onto your charcoal lighting it nearly instantly. It's easy, safe and allows you to instantly enjoy good, clean and great tasting charcoal grilling without the 30 minute wait. Is this new tool a little over the top? Yes. Do we want to buy one regardless just so that we look cool while grilling up a feast? Also, yes.

WWW.GRILLBLAZER.COM

TOP SHELF

WWW.THEURBANSHELF.COM

LIGHTWEIGHT, DURABLE AND ABLE TO HOLD OVER 4 TIMES ITS OWN WEIGHT, THE URBAN SHELF IS A MUST HAVE AT BEDTIME.

Falling asleep with your phone or charger in the bed can be not only annoying when your alarm goes off under your ear, but also dangerous and a fire hazard. The Urban Shelf fixes all of that, simply slipping under and is held in place by your mattress and has 2 convenient cord holders to safely and neatly organise your cords while your phone's on charge alongside your tv remote, keys or anything else you want easily accessible at your bedside. It's portable, space-saving design also folds flat for easy storage.



Environmental Scientist



Mechatronic Engineer



Machinery Operator



Field Technician



Chemical Engineer



Software Developer



Training Officer



Accountant

Mining. Good for Jobs. Good for the North West.

There are lots of people in lots of skilled jobs in mining across the region in Narrabri, Gunnedah, Werris Creek, Boggabri, Tamworth and more.

With more investment planned, mining can continue to underpin the economy and create more high-value jobs for local people here well into the future.

Mining. Good for NSW.

nswmining.com.au





BACK ON THE TRACK

THE WEAN AMATEUR PICNIC RACES ARE BACK FOR 2021 AFTER A HIATUS DUE TO COVID IN 2020, AND WITH WHITEHAVEN COAL AS THEIR SPONSOR IT'S LOOKING TO BE A YEAR TO REMEMBER.

'AVE A LAUGH WITH COMPONENTS ONLY

WWW.COMPONENTSONLY.COM
1300 726 801

I like to tell dad jokes.
Sometimes he laughs.

Since 1933, the Wean Amateur Picnic Races has been one of the historic events of North West, NSW. Year after year it has joined the community together for a day of racing fun and entertainment, with the horse race this year set to take place on July 10, 2021.

The course is set in a scenic bush setting between Boggabri and Manilla on land now owned by Whitehaven Coal, who are the sponsors of this years Wean Picnic Races.

One of the few functioning examples left of how previous generations used to entertain themselves, the Wean Picnic Race Club have no plans of passing into history anytime soon. Each year there's a different theme to celebrate the day, with 2019 rocking a Rock & Roll theme and 2018 boasting a French revolution and Napoleonic era of Europe theme.

"IF YOU FANCY A DRESS UP THIS YEAR'S THEME, AFRICAN SAFARI, IS SURE TO BE A LOT OF FUN FOR ALL AGES WITH PRIZES AWARDED FOR BEST DRESSED FEMALE, BEST DRESSED MALE, BEST DRESSED COUPLE, BEST AFRICAN SAFARI JUNIOR AND SENIOR CATEGORIES," SAID TREASURER, ERROL DARLEY.



The impressive thing about the well known Wean Property, is even well after 80 years it's performing the purpose it was built for and is doing so in a way that brings people together.

From its spacious grounds and its own landing strip to its festive atmosphere, and favoured destination for tour buses and aircraft, you'll have to experience the 2021 Wean Amateur Picnic Races for yourself.

The amount of effort, time and planning the completely voluntary committee put into preparing the race grounds and paperwork needed to prepare the racecourse grounds is also something to commend them on. It wouldn't happen without them.

"Why not pack a picnic lunch and enjoy the hospitality," Errol added.

"If you need any more details, please don't hesitate to visit our Facebook page at Wean Amateur Picnic Race Club Inc."

WINTER ON THE WATER



CAMPFIRE AND WATER VIEWS, WHAT BETTER WAY TO SPEND TIME AWAY FROM THE DAILY GRIND DURING THE WINTER MONTHS.

OFFSHORE

Well it's hard to believe but we are still seeing the current push south with Marlin still in the mix. Talk about drag the chain as it's what's holding to the south of the current we are now interested in and that's the Yellow and Blue Fin Tuna.

We were almost treated to our first sniff with the current backing off enough for the temp break to become fishable for us on the mid North Coast, although it has since been pushed south for the time being. But watch this space it will be back.

Closer to shore things are red hot especially if the target is Snapper, Kings and Trag from the reefs.

Kingfish are chewing on live and stick baits right along the coast. It's been so good to see these fish bounce back year after year! Snapper are really thickening up as the water starts to cool over the inshore reefs.

ESTUARIES AND LAKES

The Mullet have bailed and now it's time for the Bream and Blackfish to begin their Winter spawning run along the coast so dust off the Blackfish and Bream gear. Whether it's soaking a few baits, throwing a few lures for the Bream or waiting eagerly for a down while chasing Blackfish.

Squid will also be active this month as it's the best time to target the Calamari Squid.

BEACHES AND ROCKS

This month from the rocks we sure have plenty to target. Squid will be in great numbers around the sheltered rocky bays.

Pelagics will be working their way back up north so still well worth a shot along the mid to north coasts.

Salmon and Tailor will be moving through, spinning a few metals or slow rolling pillies will bring a few of these undone.

Tight into the structure we will see the Bream, Blackfish and Drummer start to hold around the rocks in good numbers for the Winter as well.

FRESH WATER

We are back on in the western rivers and it's really good to see the fishery is still in some sort of condition after the relentless droughts and the Cod and Yellow Belly have been fishing well.

If you're a little crazy, don't mind a challenge and are not afraid of freezing, then now is the time for the brave and the extremely patient humans to hit the western dams on the hunt for the elusive Murray Cod.

Keep floatin' - Thrifty's

HYDRAULIC TESTING AT ITS BEST



At Complete Parts and Equipment Solutions we are continually investing back into our business to ensure we can meet our customers' needs and exceed their expectations.

Our latest addition is a versatile test stand designed for testing heavy-duty off-highway hydraulic components, the AIDCO model 900C Hydraulic Test Center features some of the most advanced technology on the market today.



It provides a durable and reliable platform for performance testing transmissions, torque converters, gear pumps, vane pumps, hydrostatic pumps and hydraulic motors, cylinders, and valves. The ability to performance test these items prior to install provides increased confidence in our quality control process which results in reduced operating cost for our customers by ensuring there are no rebuild errors and removes the possibility of critical failures in the field.



1300 0 COMPLETE

reception@completepartsandequipment.com.au

PROUDLY SUPPORTING AND SUPPLYING SOLUTIONS TO THE MINING INDUSTRY

PIRTEK
WE'LL KEEP YOU OPERATING



HOSES & FITTINGS



FIRE SUPPRESSION



QUICK FILL



SAFETY



LUBRICATION



SPILL CONTROL

Bathurst
1/112 Durham St. Bathurst
(02) 6355 7004

Dubbo
42 Bourke St. Dubbo
(02) 8687 9600

Gunnedah
40-44 Allgayer Dr. Gunnedah
(02) 6742 4988

Maitland
129 Racecourse Rd. Rutherford
(02) 4932 1120

Mudgee
36 Sydney Rd. Mudgee
(02) 6372 3454

Muswellbrook
88 Maitland St. Muswellbrook
(02) 6543 4255

Newcastle
20 Muniung Rd. Cardiff
(02) 4954 5933

Orange
97 Elsham Ave. Orange
(02) 6360 2944

Singleton
14 Maskey Rd. Mt Thorley
(02) 6574 2782

Tamworth
4/61 Barnes St. Tamworth
(02) 6762 0600



134-222

24 HOURS - 7 DAYS
www.pirtek.com.au

FUN FOR EVERYONE

FOOD, FUN AND CELEBRATIONS ARE GOING TO KEEP YOU BUSY OVER THE NEXT FEW MONTHS, WITH DOZENS OF ENJOYABLE EVENTS ON THE WAY. THIS WINTER THERE'S A MAJOR FOCUS ON CELEBRATING THE RICH CULTURE AND FRUITS OF OUR REGION, MAKING FOR DELICIOUS GATHERINGS FILLED WITH LOCAL PRODUCE AND ENTERTAINMENT, BRILLIANT DISPLAYS AND AN ALL ROUND GREAT TIME. CHECK OUT OUR FAV'S!



CRAFTALIVE TAMWORTH – JULY 9, 10 & 11

CraftAlive is Australia's longest running craft event series, and it's coming to Tamworth Regional Entertainment Centre. Local and interstate craft experts will be coming together to demonstrate the latest craft supplies, kits and equipment and give you the chance to learn from world class specialists with interactive classes. The hands on event is jam packed with patchwork, quilting, machine appliqué, long arm quilting, yarn, paper craft, card making, hand embroidery, machine embroidery, scrap booking, stitchery and cross stitch, and that's just to name a few. You'll want to get moving if you want a ticket for this sure to sell out event.

WWW.CRAFTALIVE.COM.AU



EULAH CREEK ANTIQUE AND MACHINERY DAY – AUGUST 1

Held at Beulah Park (Eulah Creek) Hall, Narrabri, the Eulah Creek Antique and Machinery Day is an awesome family day out, giving you the opportunity to experience working heavy horse demonstrations, blacksmithing, historical displays and sheep shearing and view vintage working machinery, small motors (and big ones too), tractors, vintage cars and street rods. It's not only jam packed with mean machines, but there's also Devonshire Teas, craft, children's entertainment and free bush camping and showers. Everyone will find something at this event, proudly presented by the Manilla Vintage Machinery Group, to enjoy.

WWW.VISITNARRABRI.COM.AU

HARVEST GUNNEDAH – OCTOBER 2

EAT, DISCOVER & CELEBRATE are the 3 main themes of a fresh new festival coming to Riverside Racecourse, Gunnedah in 2021. This all ages, free event will boast sensational local products to try and buy, share the stories of how the foods made their way to your plate and bring family and friends together on the beautiful backdrop of the Namoi River. You can look forward to a bunch of activities from browsing street food stalls and producer markets and sitting back and listening to live music and entertainment, to sending the kids off to the kid's activities and demonstrations from local growers. There's going to be a lot of happiness in this harvest celebration.



WWW.HARVESTGUNNEDAH.COM

'AVE A LAUGH WITH COMPONENTS ONLY

WWW.COMPONENTSONLY.COM
1300 726 801

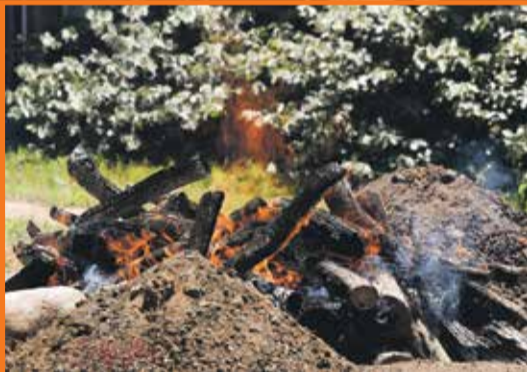
John received a parrot as a gift and discovered it had a bad attitude and an even worse vocabulary. He tried everything to change the bird's attitude but nothing worked. Finally he got fed up and in a moment of desperation put the bird in the freezer. For a few minutes the bird squawked and thrashed around and then suddenly it was quiet. Worried that he'd hurt the bird John opened the freezer. The parrot stepped gently out onto John's shoulder and said, "I believe I may have offended you with my rude language and actions. I am truly sorry, and I will do everything to correct my poor behavior." John was astonished. As he was about to ask the parrot what had made such a dramatic change in his behavior, the bird continued, "May I ask what the chicken did?"



NOSH NARRABRI – AUGUST 28 & 29

The biennial Nosh Narrabri event has enjoyed enormous success since its debut in 2003, this year to be held on the banks of the Namoi River behind on the foreground of The Crossing Theatre. Showcasing a wide variety of local produce, it's a fantastic way to appreciate the rich agriculture the region has to offer. Over 40 local and regional exhibitors will be offering gourmet samples that are sure to tantalise your taste buds, including pasta, wines and a number of delicious treats, with many available for purchase on the day. Of course, there will be live music to enjoy and children's activities to give mum and dad a break. The Nosh Cook off will be a hit, along with the licensed bar and cooking demonstrations, with the Nosh Long Lunch sure to be the highlight on the Sunday.

WWW.NOSHNARRABRI.COM.AU



HANGI IN THE COUNTRY – NOVEMBER 6

This event brings together City and Country with the focus on different demographics each year, this year having a senior focus inviting City seniors to travel to Quirindi to take part in workshops like the Bush Tucker Tour and Rodney's Rusty Relics Walk and Talk at the Art Shack in Wallabadah, see the beautiful area and meet with locals. It's a great way to gather communities to enjoy the country in a spiritual way. The traditional Hangi is prepared by a professional Hangi Cook in the Royal Theatre grands, and ready for everyone to dig in at the Theatre. Keep an eye out for tickets coming out soon.

WWW.VISITLIVERPOOLPLAINS.COM.AU



"We're back in business, and it's a great feeling."

COVID-19 hit a lot of regional small businesses hard.

Australian mining stepped up to back small business and support local jobs and communities.

As Australia recovers, mining will stand by small business to keep our regions strong.

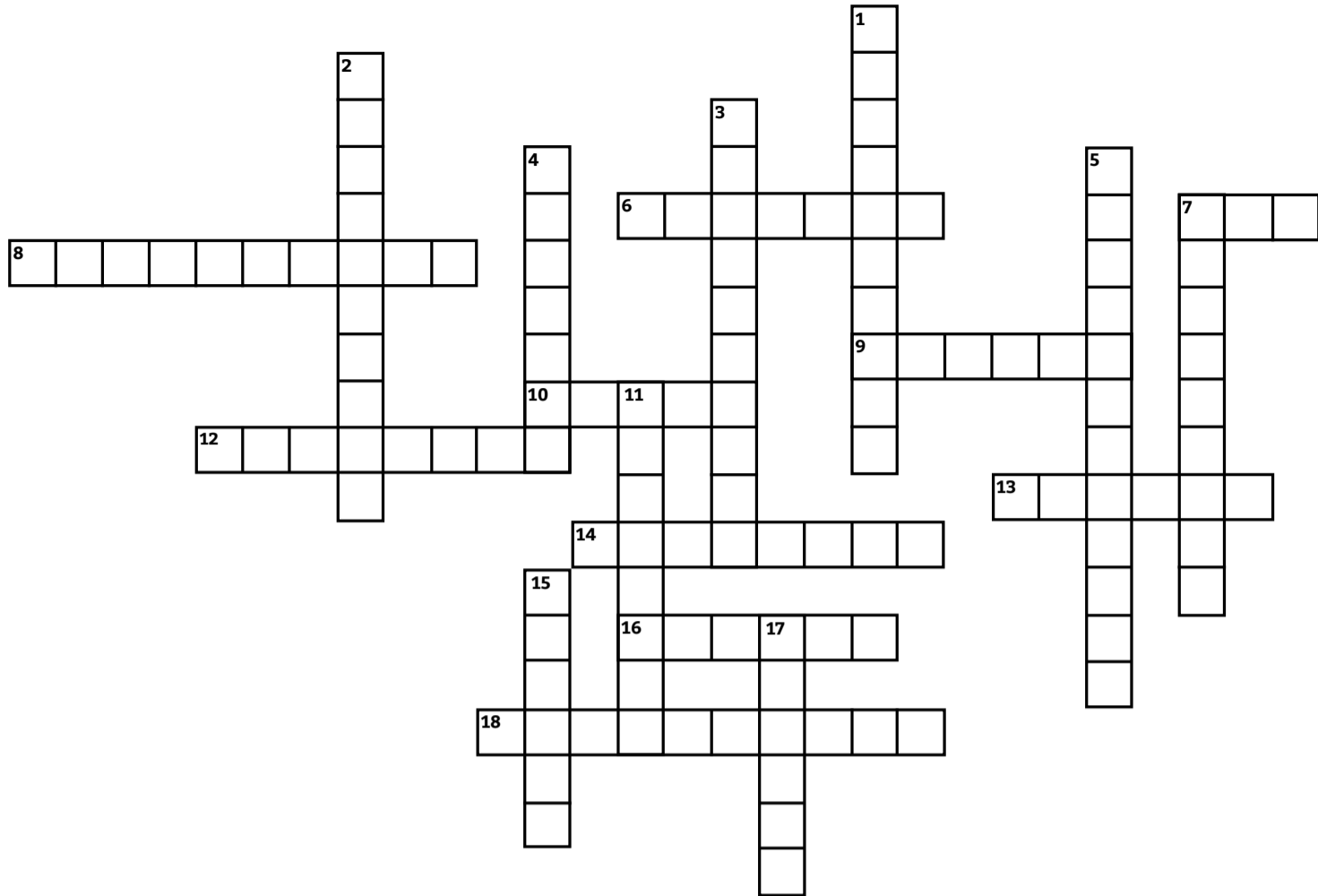
There's more to
Australian Mining
Still backing small business



www.minerals.org.au

CROSSWORD

Australian Geography



ACROSS

- 6. Home of the Big Prawn
- 7. Number of Australian states
- 8. 'Eric' pliosaur skeleton discovered here
- 9. Composition of Uluru
- 10. Town of first gold discovery

DOWN

- 1. State with most islands
- 2. Town on National Heritage list
- 3. 'Golden Mile' outback town
- 4. Australian desert
- 5. National floral emblem
- 6. 'World's Biggest Merino' location
- 7. Largest sand island
- 8. Lowest point in Australia
- 9. Sea surrounding Australia
- 10. 'Golden Mile' outback town
- 11. Cascade beer brewed here
- 12. Tasmanian town known for murals
- 13. Largest National Park
- 14. Australia's longest river



Lying half a kilometre off the southern coast of Singapore and easily accessible from the city centre by taxi, metro, or cable car, Sentosa Island has entertainment and activities catering for every holiday goer. The hardest thing about a holiday here is trying to fit everything into your itinerary! Three completely artificial beaches make up 2km of its southern coast and the combination of palm trees, red and yellow clad lifeguards, gazebos and loungers make it feel like you are stepping straight onto a Baywatch set. You're not going

to catch any waves at any of these beaches but you can sit back in the one of their Mediterrean-inspired beach club bars sipping a cocktail and watching the world go by. Sentosa is a place for kids and for parents who love to act like kids. The number of attractions will have you struggling to try them all so here are my three favourites. **UNIVERSAL STUDIOS** – Get there at opening time to beat some of the queues and try to go midweek when it's quieter. If you want to hit all the rides all day long then buy a front of line pass, it's worth the extra bucks.

IFLY SINGAPORE – Haven't got the guts to try skydiving for real? Indoor skydiving gives you the experience without the fear. And laughing at your partner's face as they are buffeted around by winds between 100 – 300km p/h. Priceless. **ADVENTURE COVE WATERPARK** – It's muggy and hot in Singapore so this waterpark is one of the best ways to escape from the heat. The best feature is the man-made river that winds around the entire park allowing you to simply jump on a tube and float along to the next wild ride. Other Sentosa Island attractions include the Aquarium, Skyline Luge & Skyride, Skypark by AJ Hackett, Megazip Park, Butterfly & Insect World, Nature Discovery, Madame Tussauds, 4D Adventureland, Casino, Serapong Golf Course and the list goes on. By the time, you've finished reading this they've probably even built a couple more! There's also lots to sightsee, when you need a break from the adrenalin (and especially if your wallet needs a break), check out the statue of the Merlion, walk along Sentosa Lookout, see WW2 base Fort Silosi, or catch one of the free trams or buses around the island. **SO, YOU'VE PLAYED HARD. NOW IT'S TIME TO REFUEL.** With a promenade filled with restaurants as basic as McDonalds and all the way up to restaurants with Michelin star ratings and celebrity chefs, you're only limited by your taste buds. For a romantic night out try the Joel Robuchon Restaurant, this fancy French restaurant is going to set you back a lot of coin but it is critically acclaimed for good reason as it promises a dining experience you won't forget. Stuck with the kids? Head to Kebab House where I had one of the best kebabs ever. Sentosa is not cheap. The exchange rate is almost 1-1 and food and drinks are more expensive then here at home. Especially alcohol! But despite the price, Sentosa Islands is a great holiday destination for families that love to play.



EVERY MISSION
EVERY DAY
**HERE
FOR YOU**

Please consider donating to our
End of Financial Year Appeal and
be part of every mission we fly.

DONATE: www.rescuehelicopter.com.au/Appeal
 PO Box 230, NEW LAMBTON NSW 2305
 1800 155 155

SCAN TO DONATE

Westpac Rescue Helicopter Service

1800 155 155 | rescuehelicopter.com.au

Proudly Supported By

**WE ARE NOW
HIRING!**

We are currently seeking
interest from keen hard-working
experienced and qualified

Boilermakers
Plant Mechanics/Fitters
Line borers

▪ Multiple full-time positions available ▪ OT Opportunities ▪ Competitive hourly rates
▪ Strong team environment ▪ Range of roster options

Please email resumes, cover letters and competencies to hr@dkheavyplantservices.com

(02) 550 421 48 | admin@dkheavyplantservices.com | dkheavyplantservices.com

A WORLDS WORTH OF COMPONENTS LOCALLY

Count on us to source, sell and market
heavy earthmoving components to...

keep you tracking

1300 726 801
componentsonly.com

AN **EQUIPZAR** MARKETPLACE

COMPONENTS ONLY

/ source / sell / market